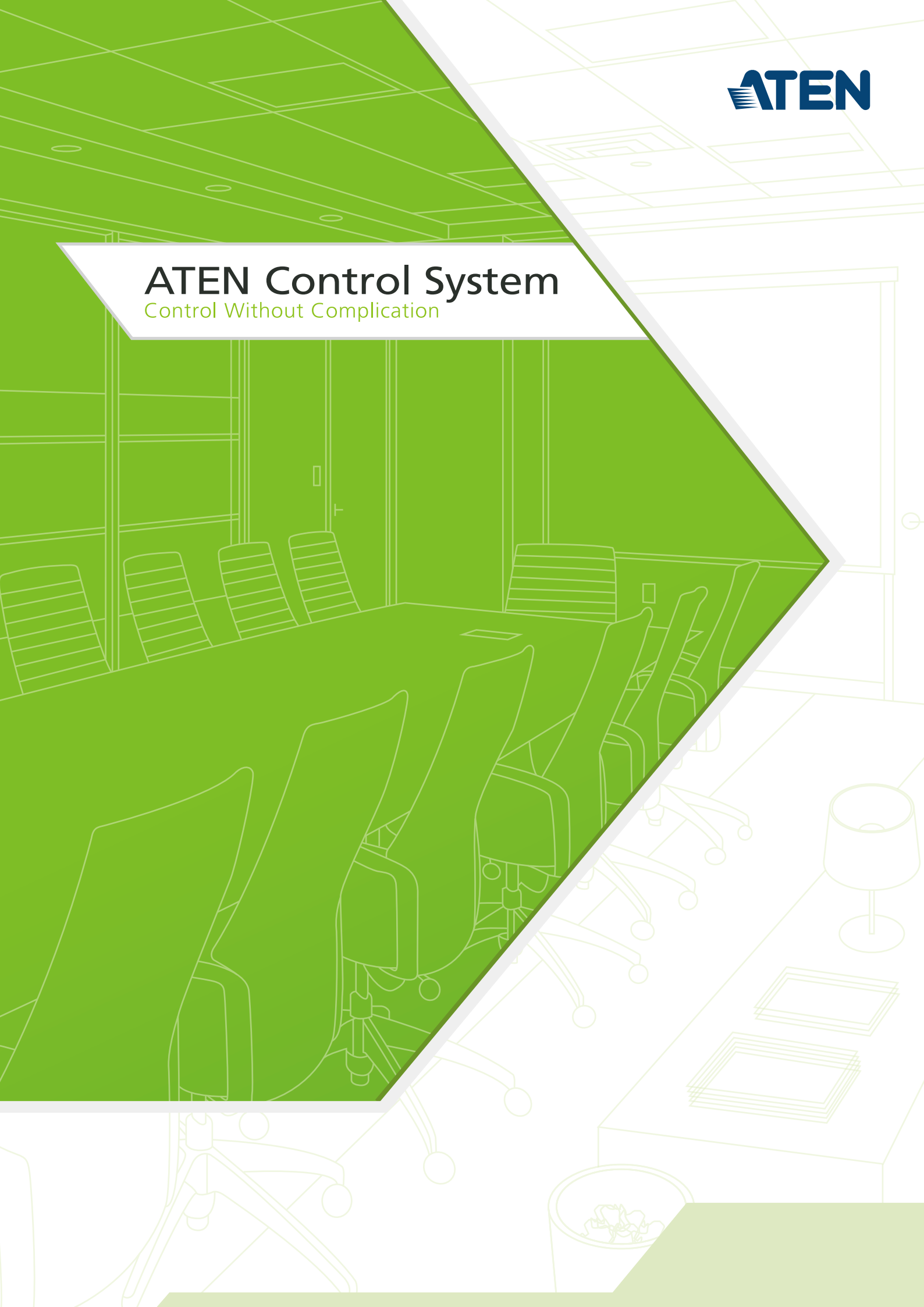




ATEN Control System

Control Without Complication



WHAT is ATEN Control System?

When it comes to creating the perfect environment for the perfect meeting, training program or video conference, you don't want to settle for anything but the comfort of control – without complication. You might have a modern environment with all sorts of high-tech equipment, but what makes it worthwhile is how you bring together the presentation with audio, video and lighting in a seamless collaboration. This is where a control system comes into the picture to provide integrated control and system automation.

The ATEN Control System, incorporating the VK2100 (ATEN Controller), the VK6000 (ATEN Configurator) and the ATEN Control System App is a standard Ethernet-based management system that connects all hardware devices in a room or large facility to provide centralized control of devices directly and effortlessly via an iPad.

- The VK2100 works as the main controller that provides great connectivity to all sorts of hardware devices commonly seen in a room.
- The VK6000 Configurator software features a quick setup that facilitates the configuration of hardware control and device operations in 4 easy steps via creation of a system project.
- The ATEN Control System App empowers you with the mobility to control different hardware devices in different rooms whenever and however you like.

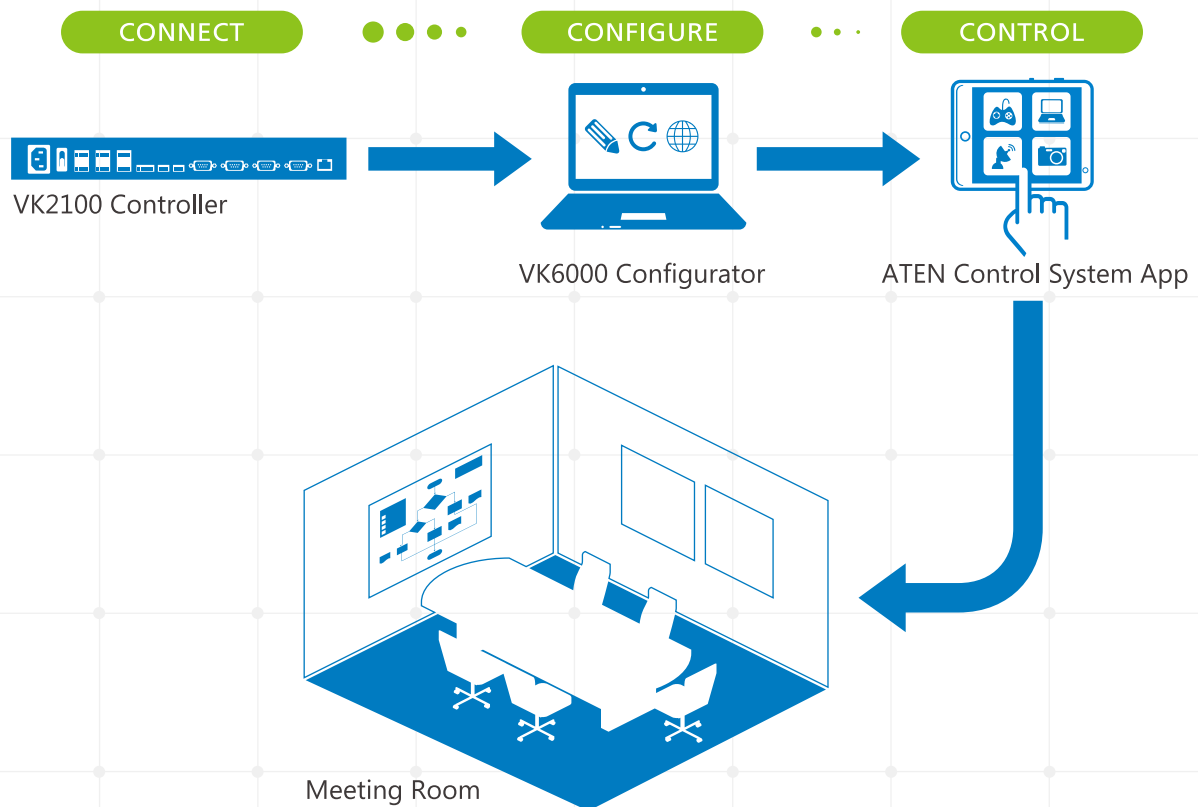
No more pre-meeting or post-meeting setup and break down, and no more redundant remote controls, everything is easily accessible on an iPad as you tap and go. The ATEN Control System is a perfect fit in the hardware consolidation plan for any working environment, educational facility, conference hall or any other room that needs complete control.



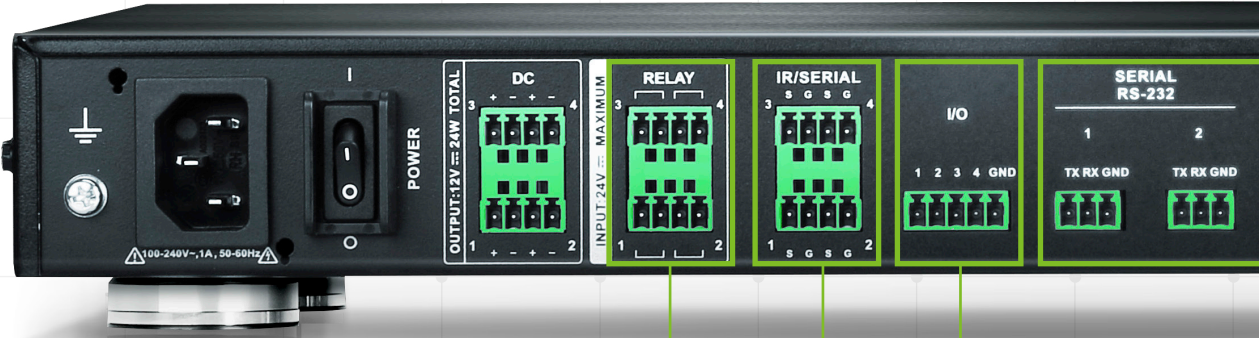
HOW to Deploy the ATEN Control System?

The ATEN Control System is perfectly applicable in any room that requires integration of different hardware devices with customizable control. No matter how large the room or how complicated the hardware, deploying the ATEN Control System can be completed in 3 easy steps:

- **CONNECT** all hardware to the VK2100 controller.
- **CONFIGURE** system settings with the VK6000 software.
- **CONTROL** the devices via the ATEN Control System App from an iPad.



LED indication for hardware



CONNECT

The VK2100 is a hardware controller that can integrate seamlessly with a complete line of hardware devices and ATEN VanCryst™ pro-A/V products. It serves as a centralized platform where hardware devices are converged to be monitored, managed and controlled directly via a tailor-made GUI from an iPad.

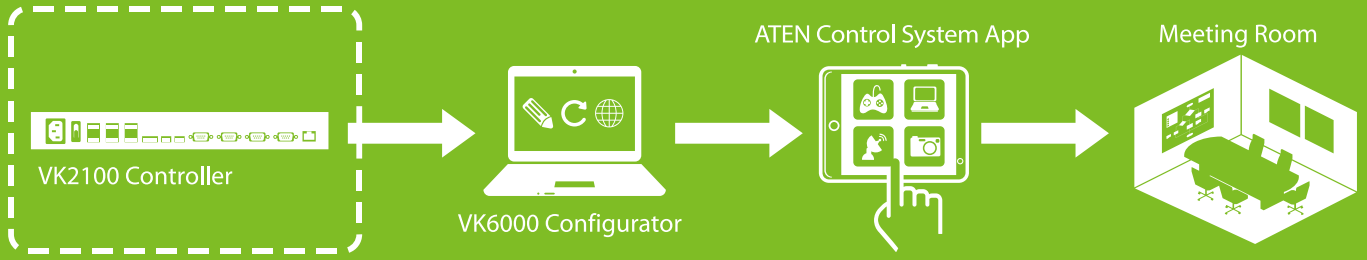
status and active messages



- USB port for easy profile upload
- IR Learning function for adding IR device drivers



- Smoke Sensor
- Curtains
- Door Sensor
- Video Matrix
- Projector
- Conferencing System



1

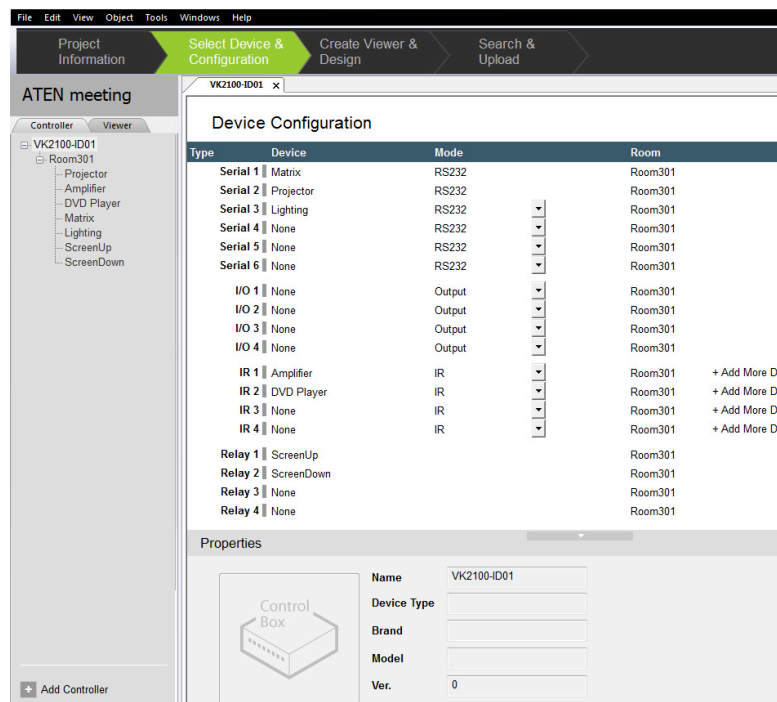
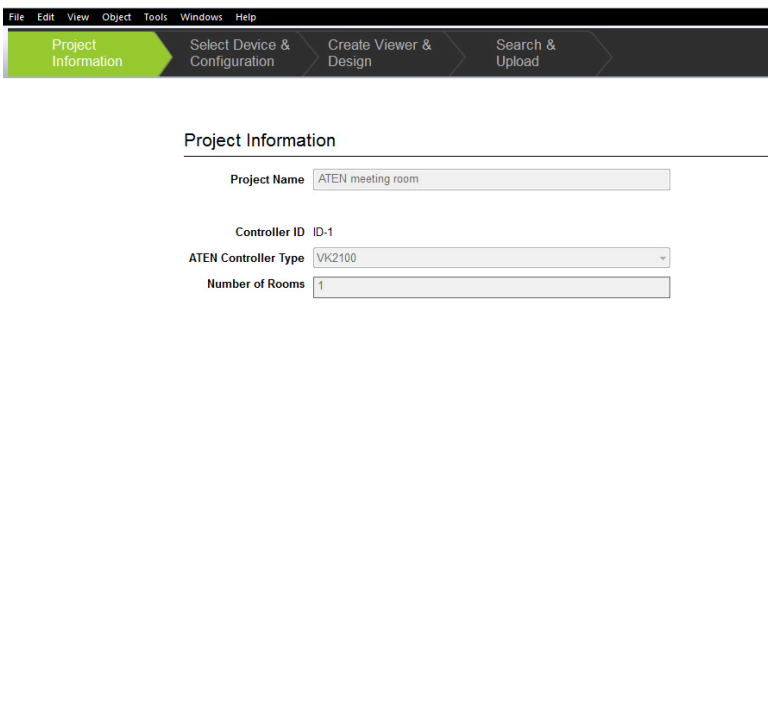
Create Project

- Simple project setup in 4 easy steps via intuitive GUI

2

Select Device

- Built-in Database Generator for device driver setup and overall device management
- Built-in ATEN Library comprising 10,000+ device drivers and complete ATEN VanCryst product drivers



CONFIGURE

The VK6000 Configurator software is used to streamline and simplify the complicated hardware setup process in 4 easy configuration steps: Create Project > Select Device > Configure Viewer Profile > Upload Profile. Operations for any room can be customized in a viewer profile that includes a personally designed GUI that perfectly fits the iPad's screen, signifying "what you see is what you get", as well as actions and commands that correspond to the control buttons and icons added to the GUI.

3

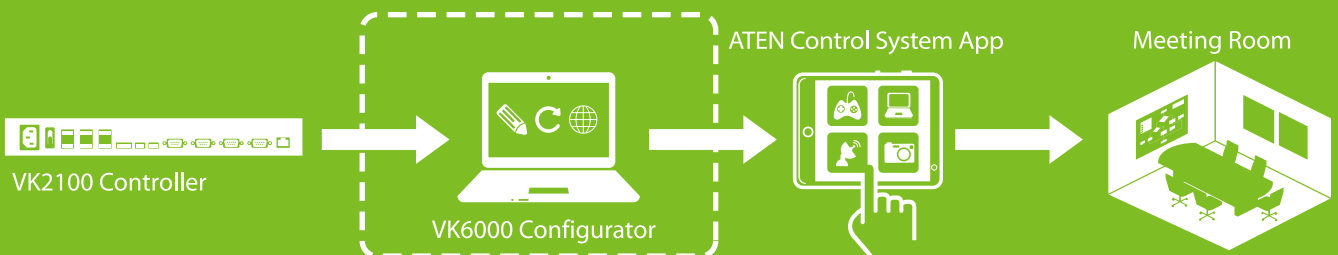
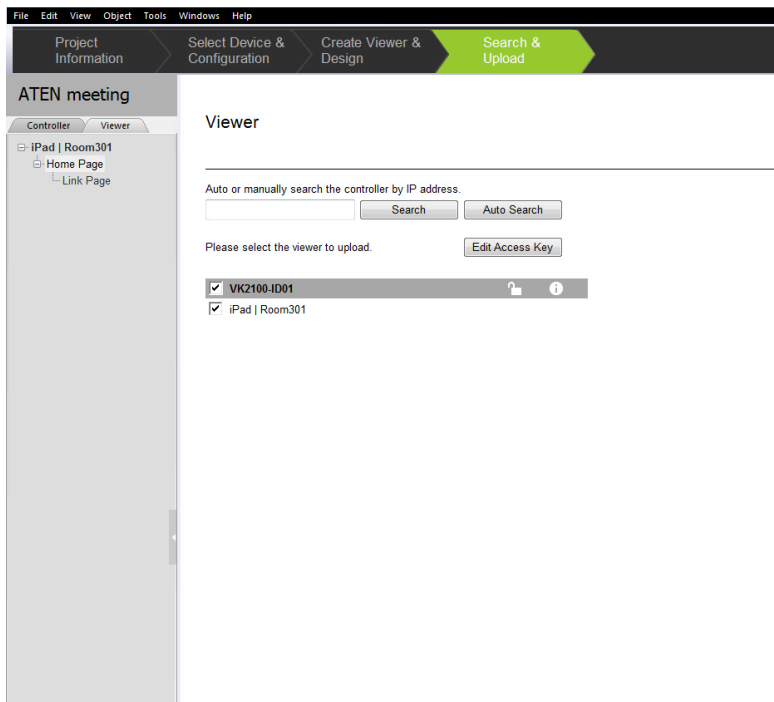
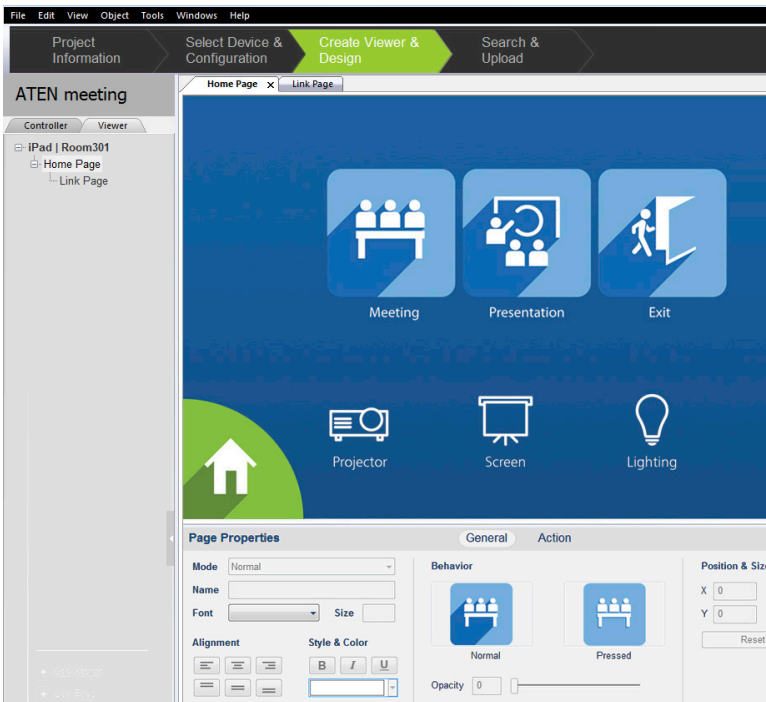
Configure Viewer Profile

- Customizable GUI design and control operations for the iPad
- Test tool to verify commands in action before uploading the profile to the VK2100
- Simulator to simulate and review the customized GUI before uploading the profile to the VK2100

4

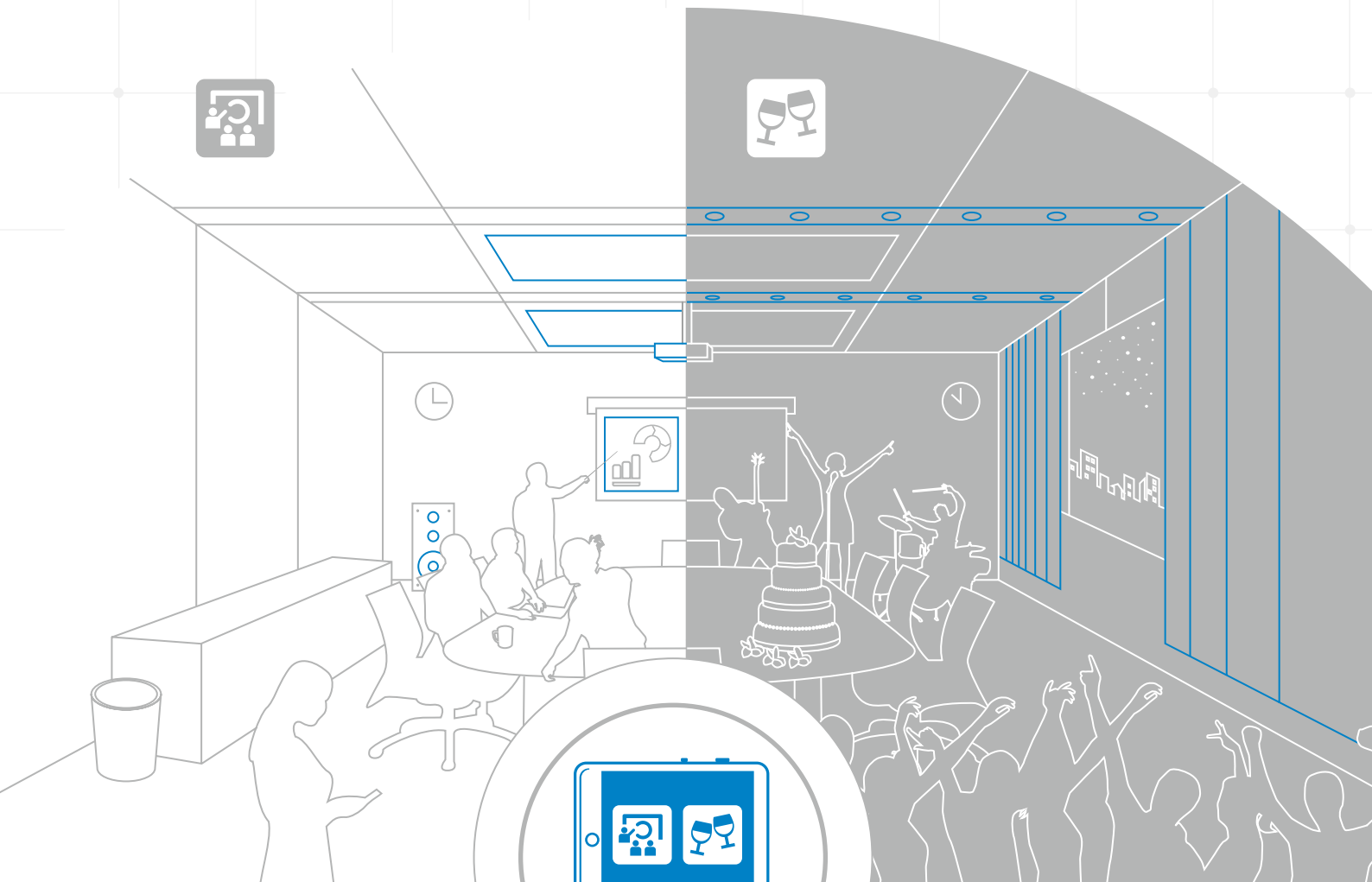
Upload Profile

- Search controller and upload profiles



Single-Room Control / Multiple Functions

With the ATEN Control System, a room can quickly change functions to suit the needs of the user. By toggling between profiles on an iPad, the room can be instantly transformed to serve different purposes. For example, a meeting room can turn into a party room with the press of a button. The switch is simple, just a quick tap on the iPad brings to life the hardware suitable for the occasion.

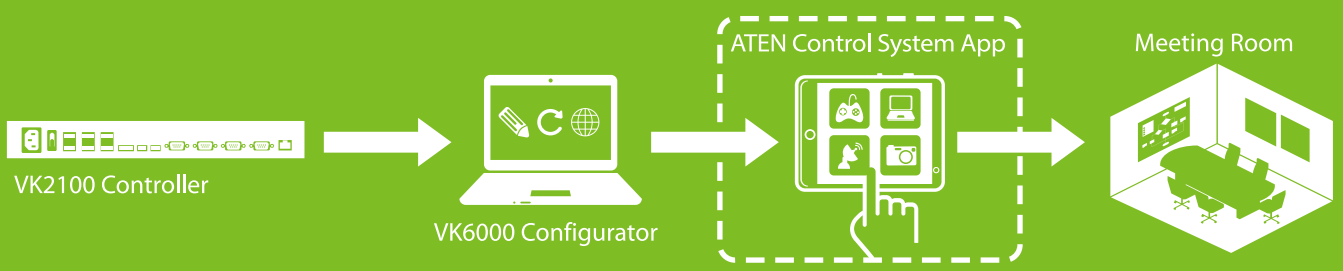
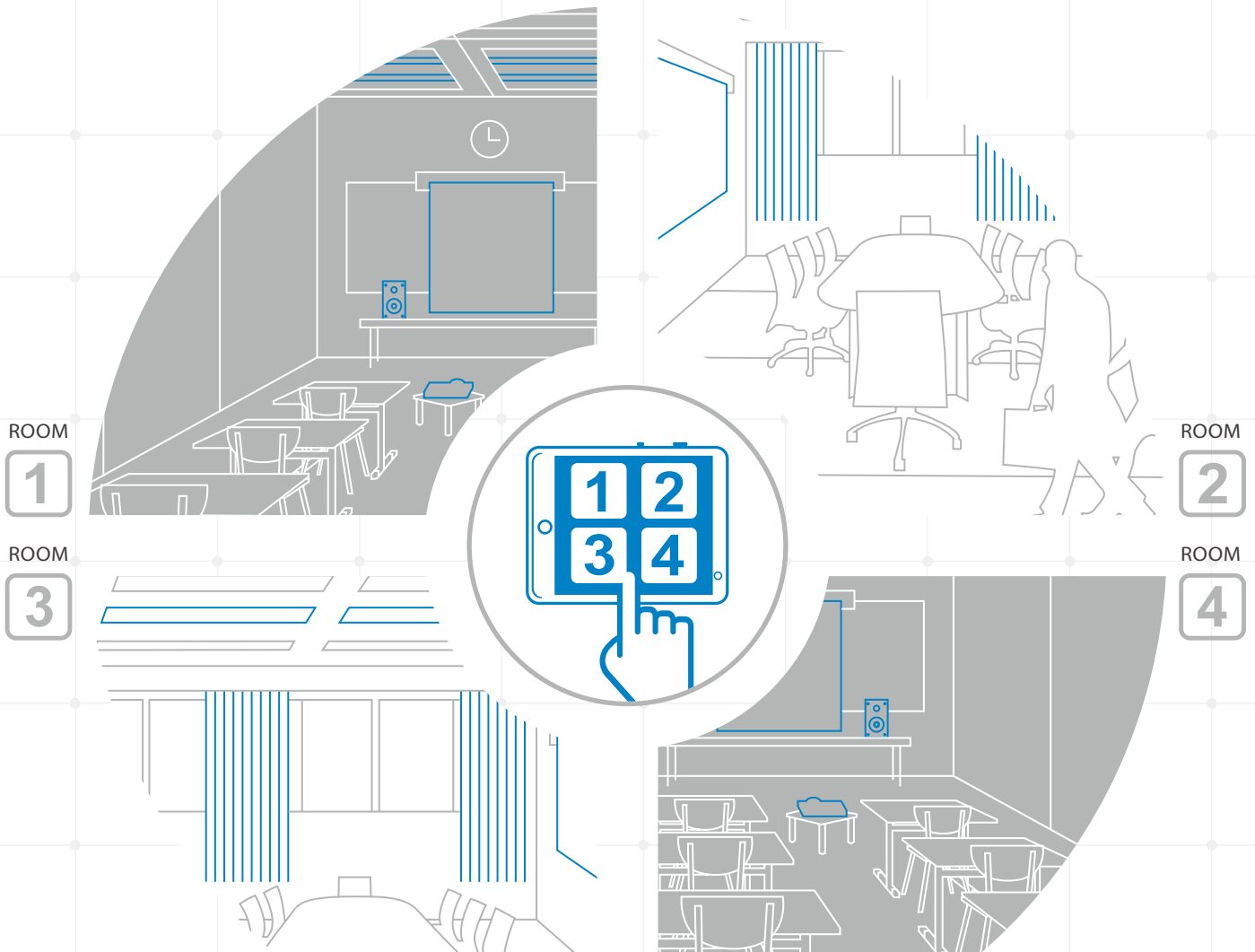


CONTROL

Through an Ethernet connection, the ATEN Control System app imports and updates viewer profiles from the controller to the iPad, allowing you to control the hardware devices in different rooms via simple point-n-tap operations from a customized GUI. Multiple iPads can be authorized with control over the same room simultaneously, depending on your software license. Meanwhile, user access to any viewer profile can be restricted with password authentication to reinforce system security.

Multi-Room Control / Central Administration

Taking control of a single room is simple but the administration of multiple rooms can be challenging. By installing the ATEN Control System, administrators can control how devices are used in each room. By importing the profiles for each room to an iPad, administrators can quickly view how each room is being operated at any time and monitor the status of particular hardware for maintenance and technical assistance. This efficient approach simplifies management and makes it much more effective regardless of the installation's scope.



Solutions Setup

The ATEN Control System can easily be deployed into an existing installation – in a variety of commercial and educational environments, as it seamlessly integrates with a wide range of hardware devices, including AV equipment, lighting systems, air conditioning, motion sensors, power switches, conference systems and much more. The ATEN Control System is perfect for meeting rooms, conference centers, boardrooms, classrooms or any room that requires complete control of all hardware equipment.



Specifications

Function		VK2100
Interface	Serial	<ul style="list-style-type: none"> • 4 x Programmable Bi-directional RS-232/422/485 Port (4 x DB9 Male Connector, configurable via pin assignments); • Baud Rate: 300 to 115200 (default: 9600); • Data Bit: 8 (default) or 7; • Parity: None (default), Even or Odd; • Stop Bit: 1 (default) or 2; • Flow Control: None (default), RTS / CTS
		<ul style="list-style-type: none"> • 2 x Bi-directional RS-232 Port (2 x 3-Pole Terminal Block Connector) • Baud Rate: 300 to 115200 (default: 9600); • Stop Bit: 1 (default) or 2; • Data Bit: 8 (default) or 7; • Parity: None (default), Even or Odd
	IR/Serial	<ul style="list-style-type: none"> • 2 x Programmable IR / Uni-directional RS-232 Port (2 x 4-Pole Terminal Block Connector), 1 x IR Learning Receiver (front panel) • IR: TTL level (0 to 5 V); Carrier Frequency: 10KHz~455KHz; Serial: Uni-directional RS-232 (+ - 5 V) Baud Rate: 300 to 115200 (default: 9600); Stop Bit: 1 (default) or 2; Data Bit: 8 (default) or 7; Parity: None (default), Even or Odd
	I/O	<ul style="list-style-type: none"> • 4 x Programmable Digital Input / Output Channel (1 x 5-Pole Terminal Block Connector) • Digital Input: <ul style="list-style-type: none"> <u>VDC Mode</u> - Input Voltage Range: 0 to 24 VDC; - Programmable Range: 1 to 24 VDC; <u>Dry Contact Mode</u> - Pull-up 2k ohms to + 12 VDC • Digital Output: 250 mA sink from 12 VDC
	Relay	<ul style="list-style-type: none"> • 4 x Relay Channel (2 x 4-Pole Terminal Block Connector) • Normally open, isolated Relays • Contact Rating: Max 24 VDC, 2A
	VDC	<ul style="list-style-type: none"> • 4 x 12 VDC Output Port (2 x 4-Pole Terminal Block Connector) • Power Supply: 12 VDC, 2A Max (shared by 4 ports)
	Ethernet	<ul style="list-style-type: none"> • 1 x RJ-45 Female, 10/100Base-T • Supported Protocol: ICMP, TCP/IP, DHCP, HTTPS, SSH • DHCP-enabled. The following default IP settings will be used if no IP is assigned within 30 seconds: IP :192.168.0.60 Subnet Mask: 255.255.255.0 • Establishes VK2100 connection with the VK6000 (ATEN Configurator) and iPad (ATEN Control System App)
Switch	Controller ID	1 x 16-segment Switch
	Power	1 x On/Off Switch
IR Learning		1 x IR Receiver LED
Reset Button		1 x Semi-recessed Pushbutton
USB		1 x USB Type A
Power	Consumption	40 Watt
	IP Rating	Internal Power: 100 – 240 VAC, 50-60 Hz
Environment	Operational Temp.	0 – 50°C
	Storage Temp.	-20 – 60°C
	Humidity	0 – 80% RH, Non-Condensing
Physical Properties	Housing	Metal
	Weight	2.64 kg
	Dimension (L x W x H)	43.72 x 16.32 x 4.40 cm



ATEN International Co., Ltd.

3F, No.125, Sec. 2, Datong Rd., Sijhih District., New Taipei City 221, Taiwan
Phone: +886-2-8692-6789 Fax: +886-2-8692-6767
<http://www.aten.com> E-mail: marketing@aten.com



© Copyright 2015 ATEN® International Co., Ltd.

ATEN and the ATEN logo are trademarks of ATEN International Co., Ltd. All rights reserved. All other trademarks are the property of their respective owners.
Printed 05/2015 V1.0