

CS22D

2-Port USB DVI Cable KVM Switch with Remote Port Selector



The CS22D 2-Port USB DVI KVM Switch is a control unit that allows access to two computers from a single USB and DVI console (keyboard, video and mouse). With the CS22D, you can access the computers conveniently via a Remote Port Selector.

The CS22D's compact all-in-one design makes it ideal for multiplatform desktop applications.

Features

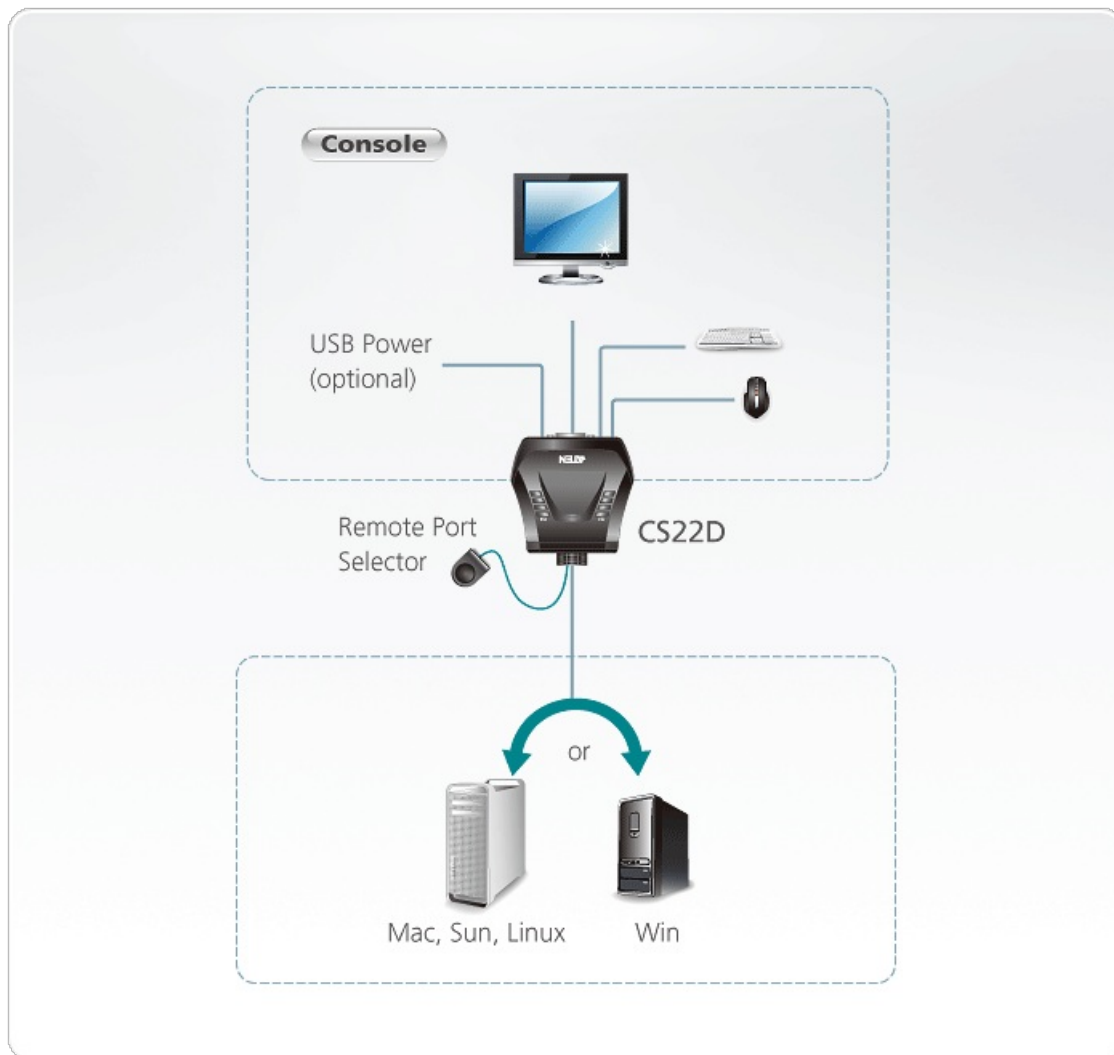
- One DVI-D video console controls two DVI-D USB interface computers
- Computer Selection via Remote Port Selector
- OS Support: Windows 2000, Windows XP, Windows Vista, 7, Mac, Sun and Linux
- Superior video quality- up to 1920 x 1200@60Hz
- Supports USB hot-plugging
- Bus-Powered
- The console USB ports can be used for USB peripheral sharing ¹

Note: 1. The CS22D may require an external power supply via a micro USB port.

Specifications

Computer Connections	2
Port Selection	Remote Port Selector
Connectors	
Console Ports	1 x DVI-D Female (White) 2 x USB Type A Female 1 x USB Mini-B Female
KVM Ports	2 x DVI-D Male (Black) 2 x USB Type A Male
LEDs	
Selected	2 (Green)
Cable Length	
KVM	2 x 1.2 m
Remote Port Selector	1.8 m
Video Resolution	1920 x 1200 @ 60 Hz
Power Consumption	DC5V:0.93W:9BTU/h Note: ● The measurement in Watts indicates the typical power consumption of the device with no external loading. ● The measurement in BTU/h indicates the power consumption of the device when it is fully loaded.
Environmental	
Operating Temperature	0 - 50°C
Storage Temperature	-20 - 60°C
Humidity	0 - 80% RH, Non-condensing
Physical Properties	
Housing	Plastic
Weight	0.34 kg (0.75 lb)
Dimensions (L x W x H)	9.95 x 9.66 x 3.01 cm (3.92 x 3.8 x 1.19 in.)
Note	For some of rack mount products, please note that the standard physical dimensions of WxDxH are expressed using a LxWxH format.

Diagram



ATEN International Co., Ltd.

3F, No.125, Sec. 2, Datong Rd., Sijhih District., New Taipei City 221, Taiwan
 Phone: 886-2-8692-6789 Fax: 886-2-8692-6767
 www.aten.com E-mail: marketing@aten.com



© Copyright 2015 ATEN® International Co., Ltd.
 ATEN and the ATEN logo are trademarks of ATEN International Co., Ltd.
 All rights reserved. All other trademarks are the property of their
 respective owners.