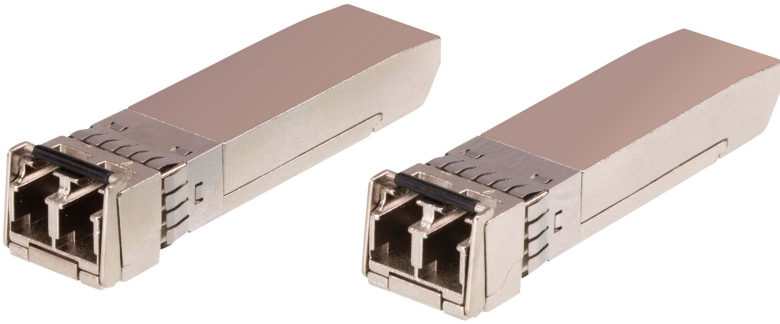


2A-141G

10G Multi-Mode/300M Fiber SFP+ Module



The 2A-141G 10G Multi-Mode/300M Fiber SFP+ Module is designed for use in 10GbE Ethernet environment that allows you to connect a multi-mode Gigabit Ethernet network cable to a network switch's SFP+ port. The 2A-141G provides 10GbE connectivity at distances up to 300 meters. As a hotpluggable module with a standard duplex connector for fiber communications, the 2A-141G works with multi-mode-fiber (MMF) connections and operates at a nominal wavelength of 850 nm. This makes the module a cost-effective and highperformance transceiver to substantially increase the span of a compatible network switch.

Features

- Extend your network connectivity up to 300 meters
- Compliant with IEEE 802.3ae standards
- Compliant with SFF-8431 MSA Digital Diagnostic Monitor (DDM)
- Hot pluggable
- Low power consumption
- Operation Temperature from 0° C to 70° C
- RoHS compliant

Specifications

| | |
|------------------------|---|
| Fiber Optics | |
| Data Rate | 10 Gbps |
| Operating Distance | 300 m |
| Fiber Type | Multi Mode |
| Connector Type | LC |
| DDM | Yes |
| Environmental | |
| Operating Temperature | 0-70°C |
| Storage Temperature | -40-85°C |
| Physical Properties | |
| Weight | 0.02 kg (0.04 lb) |
| Dimensions (L x W x H) | 5.59 x 1.46 x 1.30 cm (2.2 x 0.57 x 0.51 in.) |
| Note | For some of rack mount products, please note that the standard physical dimensions of WxDxH are expressed using a LxWxH format. |

ATEN International Co., Ltd.

3F., No.125, Sec. 2, Datong Rd., Sijhih District., New Taipei City 221, Taiwan
 Phone: 886-2-8692-6789 Fax: 886-2-8692-6767
 www.aten.com E-mail: marketing@aten.com



© Copyright 2015 ATEN® International Co., Ltd.
 ATEN and the ATEN logo are trademarks of ATEN International Co., Ltd.
 All rights reserved. All other trademarks are the property of their respective owners.