

## VE157

VGA/Audio Cat 5 Extender with MK Wall Plate (1280 x 1024 @150 m)



The VE157 VGA/Audio Cat 5 Extender with MK Wall Plate is designed to be conveniently mounted in a one- gang junction box for UK, Singapore, Hong Kong and other markets that apply MK type junction boxes. It extends VGA and audio signals up to 150 meters over a Cat 5e/6 cable and supports wide screen formats while ensuring excellent video quality.

The VE157 can be easily powered at either the Transmitter or Receiver side using another Cat 5e/6 cable. The VE157's compact wall plate design does away with bulky cables allowing a neat and convenient installation. Therefore, it is a perfect solution for function rooms, museums and any setting that requires equipment or cabling to be kept from the public's view.

### Features

- Uses two Cat 5e/6 cables to connect the local and remote units- one to transmit video, and another for power\*
- Remotely powered from either the Transmitter or Receiver side\*\*
- Extends the distance between VGA source and VGA display
- Supports superior video quality up to 1920 x 1200 @60 Hz at a distance of 30 m; 1280 x 1024 @ 60 Hz at a distance of 150 m
- Designed to mount in one- gang junction box for UK, Singapore, Hong Kong and other markets that apply MK type junction boxes.
- Adjustable Gain Control – manually adjusts signal strength to compensate for distance
- Supports wide screen formats
- Supports hot- plugging
- Supports stereo audio
- Built- in 8KV/ 15 KV ESD protection
- Plug- and- play with no software installation required
- LED indication of power sources / connection status

\* A second Cat 5e/6 cable connection is required to remotely power on either the transmitter or receiver

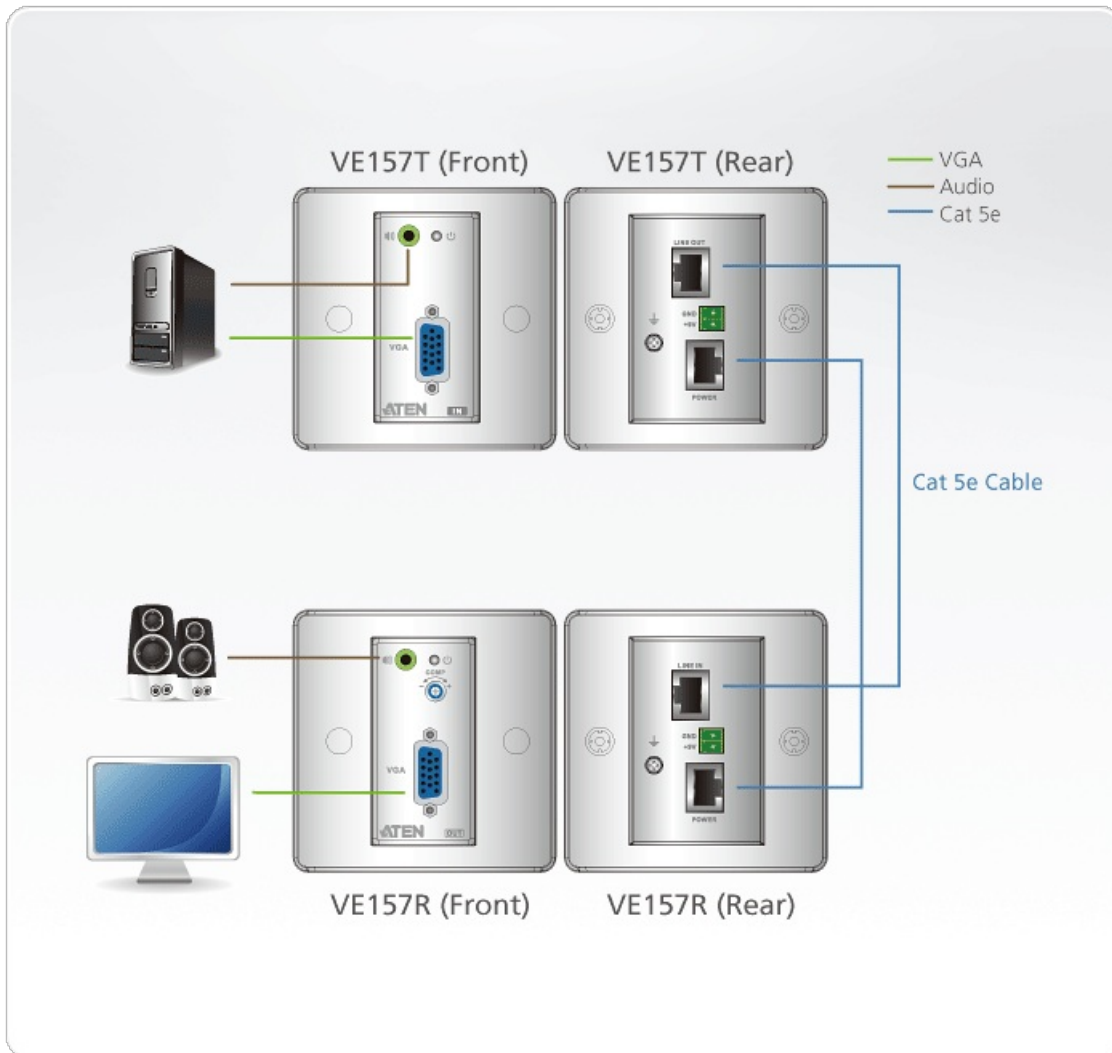
\*\*A power adapter is provided with this package and can be used at either the transmitter or receiver side, which in turn remotely powers the other unit

### Specifications

| Function     | VE157R                   | VE157T                   |
|--------------|--------------------------|--------------------------|
| Video Input  |                          |                          |
| Interfaces   | N/A                      | 1 x HDB-15 Female (Blue) |
| Impedance    | N/A                      | 100 Ω                    |
| Video Output |                          |                          |
| Interfaces   | 1 x HDB-15 Female (Blue) | N/A                      |

|                                  |   |   |
|----------------------------------|---|---|
| Impedance                        | 100 $\Omega$  | N/A   |
| Video                            |   |   |
| Max. Resolutions / Distance      | Up to 1920 x 1200@30m; 1280 x 1024@150m   | Up to 1920 x 1200@30m; 1280 x 1024@150m   |
| Max. Bandwidth                   | 300 MHz   | 300 MHz   |
| Audio                            |   |   |
| Input                            | N/A   | 1 x Mini Stereo Jack Female (Green)   |
| Output                           | 1 x Mini Stereo Jack Female (Green)   | N/A   |
| Connectors                       |   |   |
| Power                            | 1 x Terminal Block (Green)  | 1 x Terminal Block (Green)  |
| Power Consumption                | DC9V:0.95W:4BTU/h<br><br>Note:<br>● The measurement in Watts indicates the typical power consumption of the device with no external loading.<br>● The measurement in BTU/h indicates the power consumption of the device when it is fully loaded. | DC9V:1.65W:8BTU/h<br><br>Note:<br>● The measurement in Watts indicates the typical power consumption of the device with no external loading.<br>● The measurement in BTU/h indicates the power consumption of the device when it is fully loaded. |
| Environmental                    |   |   |
| Operating Temperature            | 0 - 50°C  | 0 - 50°C  |
| Storage Temperature              | -20 - 60°C  | -20 - 60°C  |
| Humidity                         | 0 - 80% RH, Non-Condensing  | 0 - 80% RH, Non-Condensing  |
| Physical Properties              |   |   |
| Housing                          | Metal   | Metal   |
| Weight                           | 0.18 kg ( 0.4 lb )  | 0.18 kg ( 0.4 lb )  |
| Dimensions (L x W x H)           | 6.86 x 4.44 x 4.28 cm<br>(2.7 x 1.75 x 1.69 in.)  | 6.86 x 4.44 x 4.28 cm<br>(2.7 x 1.75 x 1.69 in.)  |
| Faceplate Dimensions (L x W x H) | 8.60 x 8.60 x 1.60 cm<br>(3.39 x 3.39 x 0.63 in.)   | 8.60 x 8.60 x 1.60 cm<br>(3.39 x 3.39 x 0.63 in.)   |
| Carton Lot                       | 5 pcs   | 5 pcs   |
| Note                             | For some of rack mount products, please note that the standard physical dimensions of WxDxH are expressed using a LxWxH format.   |   |

## Diagram



### ATEN International Co., Ltd.

3F., No.125, Sec. 2, Datong Rd., Sijhih District., New Taipei City 221, Taiwan  
 Phone: 886-2-8692-6789 Fax: 886-2-8692-6767  
 www.aten.com E-mail: marketing@aten.com



© Copyright 2015 ATEN® International Co., Ltd.  
 ATEN and the ATEN logo are trademarks of ATEN International Co., Ltd.  
 All rights reserved. All other trademarks are the property of their  
 respective owners.