

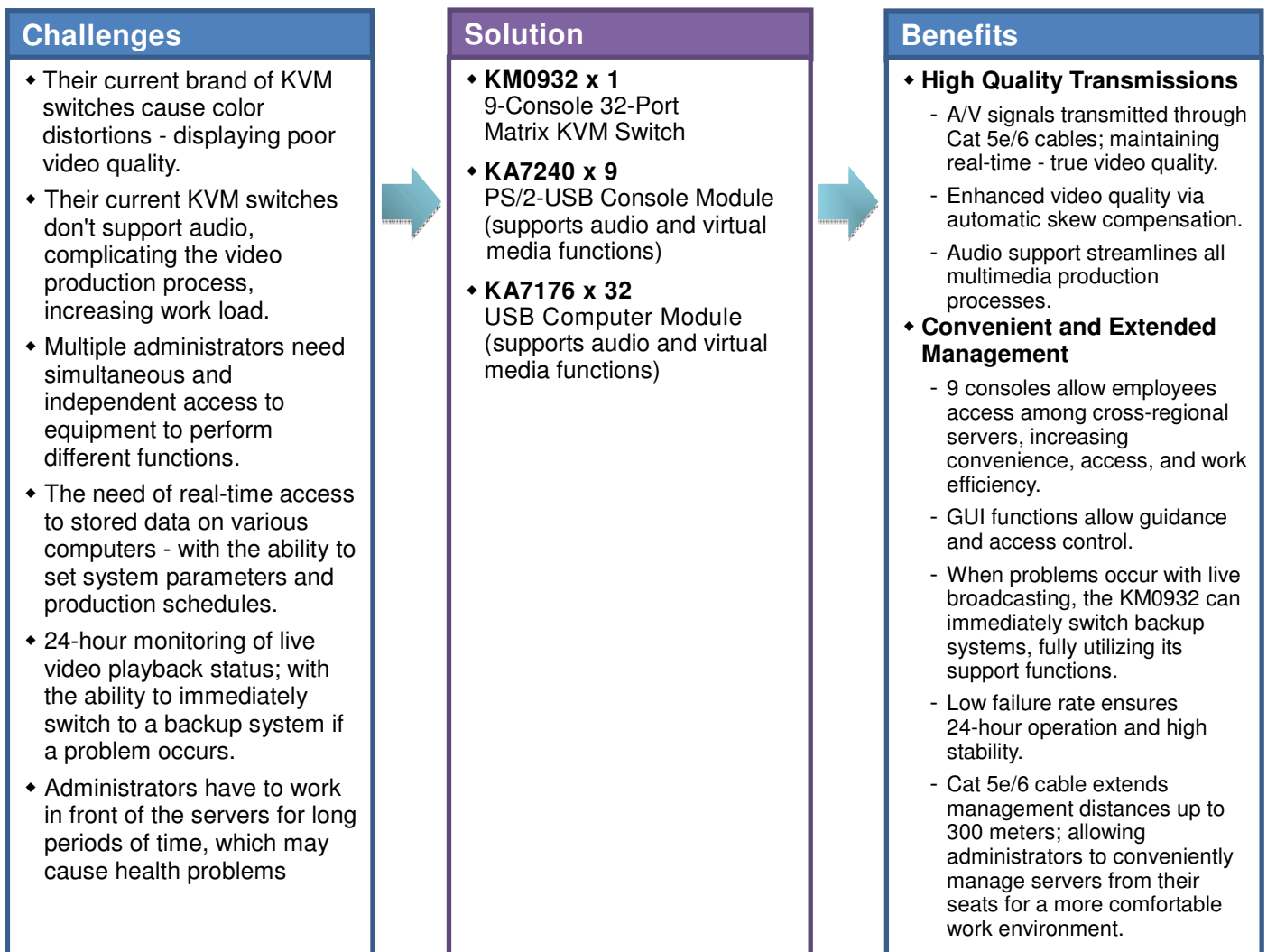
MY CARTOON KIDS Station Integrates Matrix KVM Solution to Enhance Systems Operations

Multi-console management solution offers simple operation and smooth switching

Customer: Top-Insight International Co., Ltd. - MY CARTOON TV Station



Established in 1991, Top-Insight was the first Taiwanese company to import Japanese animation. In 2011, Top-Insight launched the 24-hour HD channel “MY KIDS TV”, targeting children on Chunghwa Telecom’s multimedia platform- MOD. The channel plays popular Japanese animation shows such as Chibi Maruko Chan, Doraemon, and Pokemon. Top-Insight’s headquarters is located in Taipei with branch offices in Hong Kong, Shanghai and Tokyo.



Challenges

MY CARTOON KIDS TV is a new multimedia business established by Top-Insight International, created to digitalize all new TV content. MY CARTOON KIDS TV is Taiwan’s first TV station to use the “HD Tapeless” operating method; a process that transmits all video content as a digital file through fiber-optic networks, in order to reduce the workload required to broadcast productions. The previous brand of KVM switches that MY CARTOON KIDS TV used displayed color shading and color cast problems when switching among servers, thus they were unable to satisfy the TV stations’ demand of high image quality. In addition, the old KVM switches did not support audio transmissions, which in turn required administrators the redundant task of sitting at the servers to perform any editing, subtitle or scheduling

duties. MY CARTOON KIDS TV needed a solution that could allow multiple administrators with different requirements- simultaneous access to equipment in order to perform specific functions such as; fiber-optic authorizations, incoming line distributions, broadcast scheduling and external data transmissions.

Solution

ATEN's Matrix KVM Switch - Extended Management - Reliable Transmission with Low Failure Rates

MY CARTOON KIDS TV's office is divided into a main work area and control room, each with it's own racks and a total of 30 servers. To satisfy the working conditions, MY CARTOON KIDS TV purchased the KM0932 9-Console/32-Port Matrix KVM Switch, along with 9 sets of KA7240 - PS/2-USB console modules and 32 sets of KA7176 - USB computer modules. The ATEN Matrix KVM solution allows connections to all 30 servers in the main work area and control room, allowing a maximum of 9 administrators to simultaneously or independently control any/all of the servers. The solution supports high quality reliable signal transmissions for managing the multimedia content, which fully satisfied MY CARTOON KIDS TV's diverse needs for it's multimedia applications.



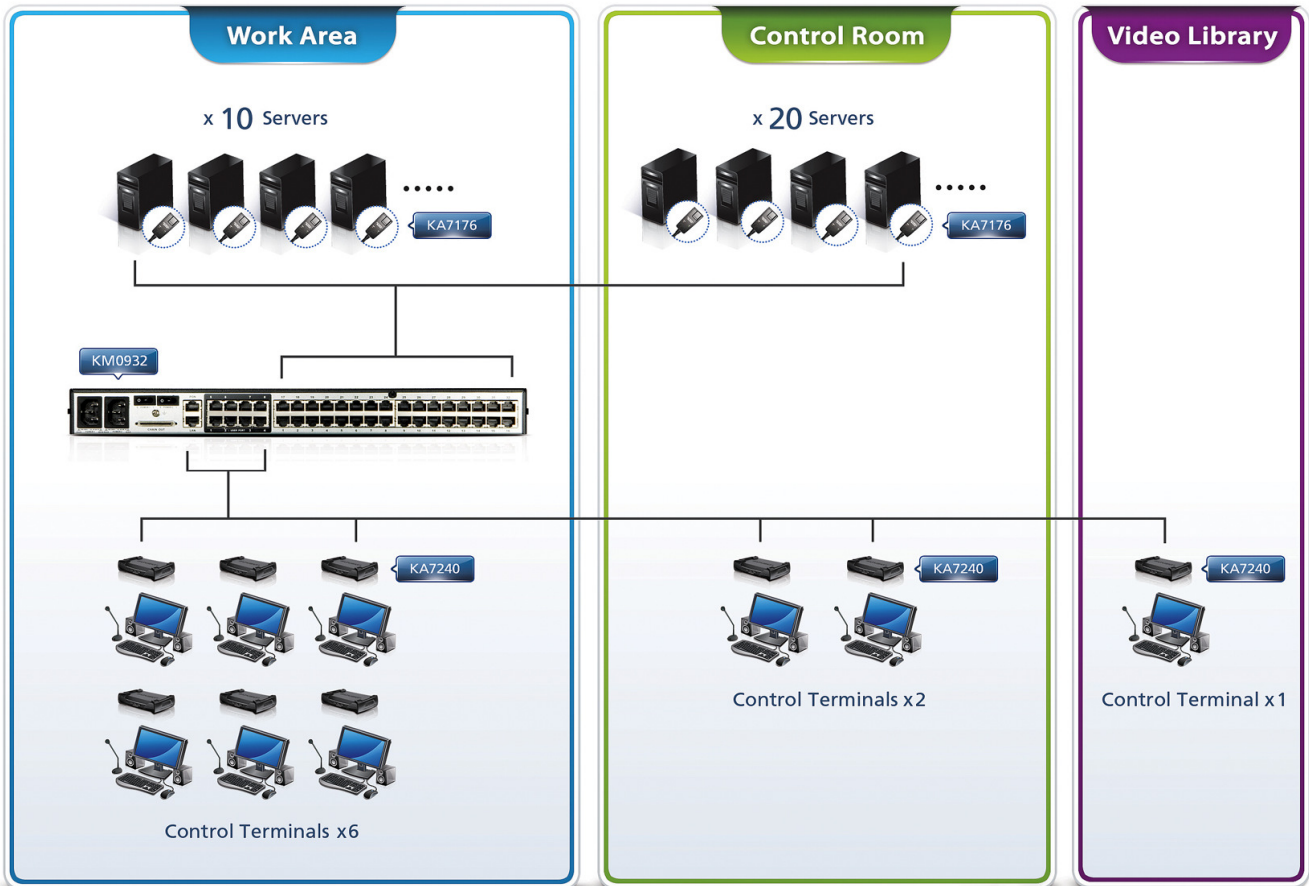
KM0932
9-Console 32-Port Matrix KVM Switch



KA7240
PS/2-USB Console Module



KA7176
USB Computer Module



— Cat 5e/6 cable

Benefits

High Quality Audio & Video - Assures Crisp Clear Retention Switching Servers

The KM0932 supports high video quality - 1280x1024 @60Hz up to 300 meters. With ATEN's patented Deskew technology, it automatically synchronizes the time delay of RGB signals and corrects the color phase and timing errors that occur over large distance transmissions. The advanced function allows engineers to edit the video, audio and subtitles conveniently with smooth transmissions. When switching multimedia animation signals over long distances, this assures real-time and true video quality.

Unlike previously used KVM switches, the ATEN Matrix KVM switch supports full audio transmission from all servers. When problems occur with the equipment, the administrator hears the alarm sound made by the server from the console speakers, so that problems can be monitored and fixed quickly, as they occur, lowering potential repair costs. The KM0932 also connects to the rack equipment in the control room that used for scheduling broadcasts, when any problem occurs they can immediately switch to backup systems using the KM0932, which assures continuous video playback without interruption.



KM0932 allows 24-hour monitoring of video playback from the control room, and immediately activates the backup system when problem occurs.

Cat 5e/6 Cable Simplifies Installation and Extends Management to 300 meters

KM0932 uses Cat 5e/6 cable for all connections, which not only simplifies the equipment installation process, but also extends the distance between console and server- to a maximum of 300 meters. It makes space planning more flexible and separates the work area from the server rack at greater distances. Administrators can work from their consoles away from the servers for a more comfortable work environment. The KM0932 provides 9 consoles, allowing multiple administrators the ability to switch and access multiple servers simultaneously and over long distances.

Convenient Management, Increased Efficiency - Lowering Costs

Since MY CARTOON KIDS TV is the first TV station in Taiwan to fully apply digitalized operations, the traditional methods of manually copying and transporting video tapes are no longer needed. All editing, post-production, scheduling and other processes are now completed by computer. By connecting the main work area, control room and video library through the KM0932, administrators are able to efficiently switch and access multiple servers located in different areas. Plus KM0932 supports the industry's first full screen graphical user interface (GUI), which offers an integrated tree view of all ports for convenient navigation and access. In addition to increasing work performance, the KM0932 also lowered manual labor costs.



Future



"Since we installed the ATEN Matrix KVM Solution, we can fully experience the high stability and convenience that it has brought us. As digitalized TV content is getting more popular, TV stations need more equipment to perform data storage and operations; ATEN's products truly fulfill the requirements for this trend. In addition to providing high quality video, it also helped us efficiently manage all of our servers in order to increase our work efficiency. In the future, we hope that ATEN can develop KVM solution that supports more consoles in response to the special demands of the media industry," -Production Manager, MY CARTOON KIDS TV.