

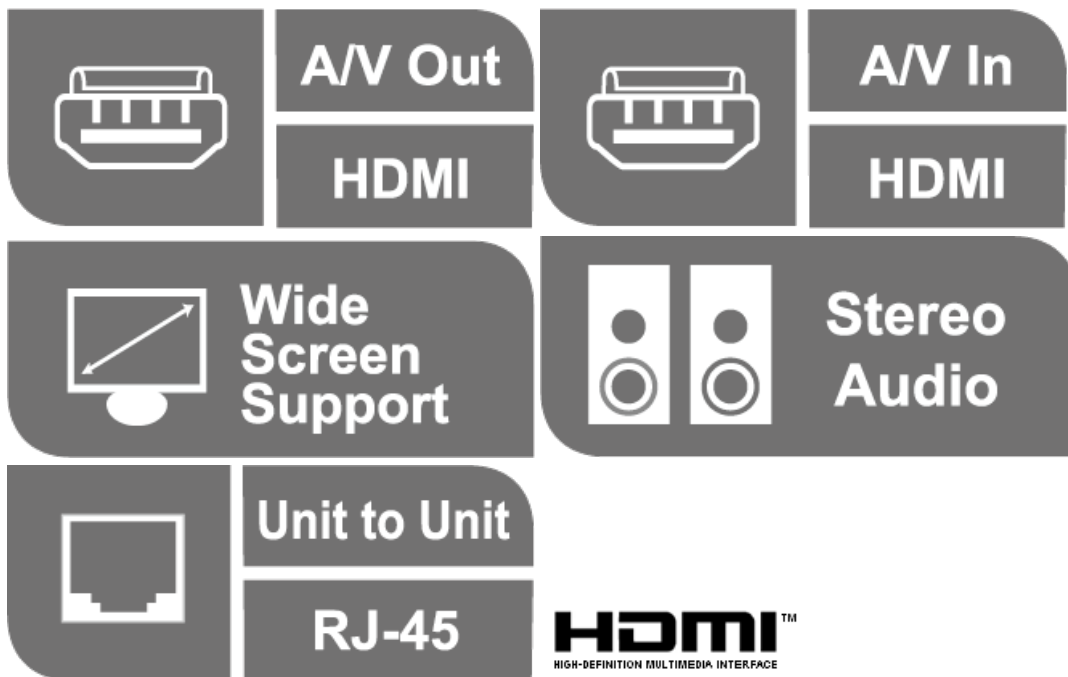
## VE807

HDMI/Audio Cat 5 Extender with MK Wall Plate (1080p @ 40m)



The VE807 HDMI/Audio Cat 5 Extender with MK Wall Plate is designed to be conveniently mounted in a one-gang junction box. It extends HDMI and audio signals up to 60 meters over a Cat 5e/6 cable and supports widescreen formats ensuring excellent video quality.

The VE807 can be either powered at Transmitter or Receiver side, and a second Cat 5e/6 cable is used for power signal transmission, real EDID bypass, and HDCP key authentication. The VE807's compact wall plate design does away with bulky cables allowing a neat and convenient installation. Therefore, it is a perfect solution for function rooms, museums and any setting that requires equipment or cabling to be kept from the public's view.



## Features

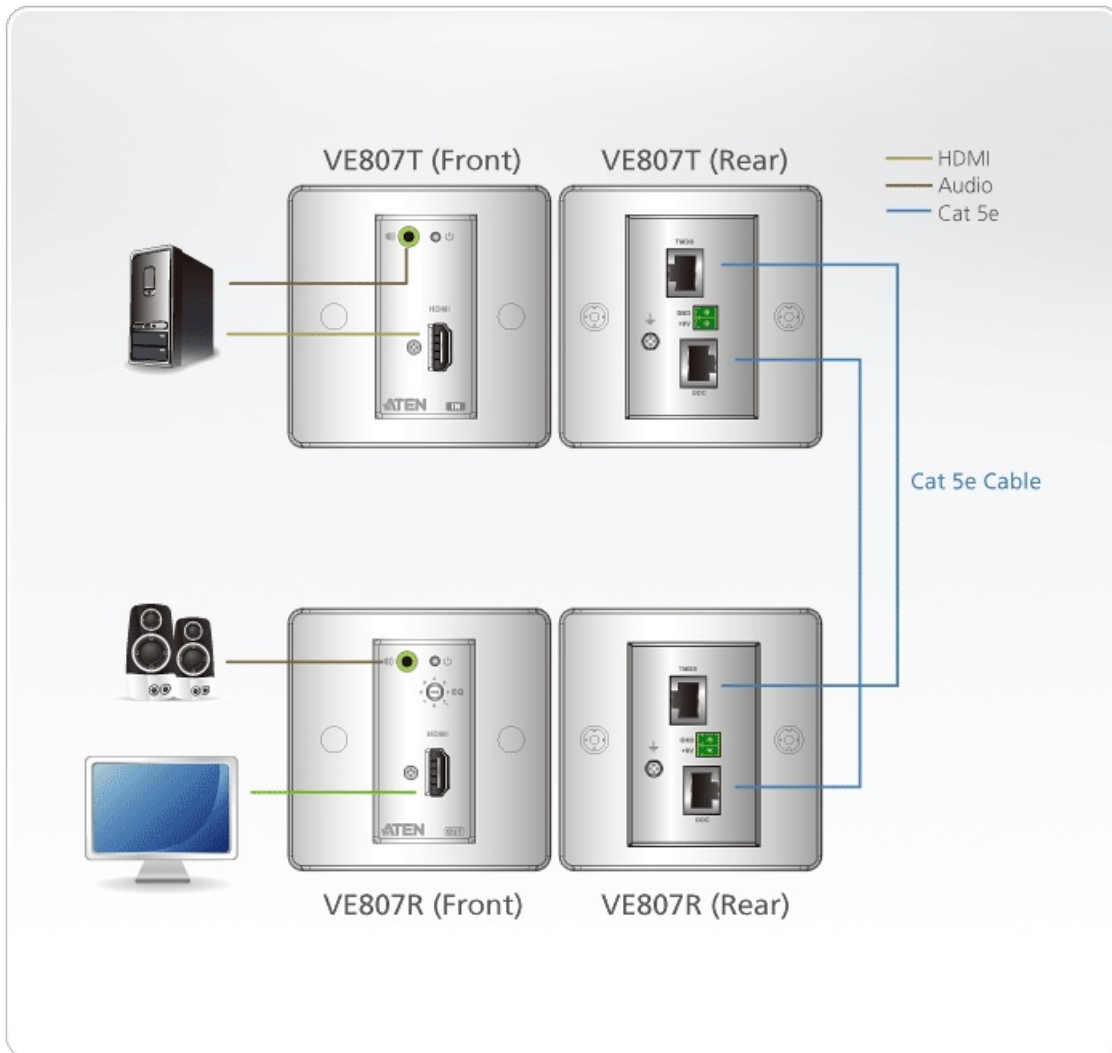
- Uses two Cat 5e/6 cables to connect the local and remote units - one to transmit video and audio signal, and the other one is used for power signal transmission, real EDID bypass, and HDCP key authentication\*
  - Remotely powered from either the transmitter or receiver side\*\*
  - Extends the distance between HDMI source and display
  - Supports superior video quality up to 1080p @ 60 Hz at a distance of 40 m; 1080i @ 60 Hz at a distance of 60 m
  - Designed to mount in one- gang junction box for UK, Singapore, Hong Kong and other markets that apply MK type junction boxes.
  - HDMI (3D, Deep Color); HDCP compatible
  - Supports 8 segment equalization adjustment via switch
  - Supports widescreen formats
  - Supports hot- plugging
  - Supports stereo audio
  - Built- in 8KV/ 15 KV ESD protection
  - Plug- and- play with no software installation required
  - LED indication of power sources / connection status
- \* A second Cat 5e/6 cable connection is required to remotely power on either the transmitter or receiver
- \*\*A power adapter is provided with this package and can be used at either the transmitter or receiver side, which in turn remotely powers the other unit

## Specification

Function	VE807R	VE807T
Video Input		
Interfaces	N/A	1 x HDMI Type A Female (Black)
Impedance	N/A	100 $\Omega$
Max. Distance	N/A	3 m
Video Output		
Interfaces	1 x HDMI Type A Female (Black)	N/A
Impedance	100 $\Omega$	N/A
Max. Distance	3 m	N/A
Video		
Max. Data Rate	6.75 Gbps (2.25 Gbps Per Lane)	6.75 Gbps (2.25 Gbps Per Lane)
Max. Pixel Clock	225 MHz	225 MHz
Compliance	HDMI (3D, Deep Color) HDCP Compatible	HDMI (3D, Deep Color) HDCP Compatible
Max. Resolutions / Distance	Up to 1080p@40m; 1080i@60m	Up to 1080p@40m; 1080i@60m
Audio		
Input	N/A	1 x HDMI Type A Female (Black)
Output	1 x HDMI Type A Female (Black)	N/A
Connectors		
Power	1 x Terminal Block (Green)	1 x Terminal Block (Green)

Power Consumption	DC9V:0.81W:4BTU/h  Note: ● The measurement in Watts indicates the typical power consumption of the device with no external loading. ● The measurement in BTU/h indicates the power consumption of the device when it is fully loaded.	DC9V:1.35W:6BTU/h  Note: ● The measurement in Watts indicates the typical power consumption of the device with no external loading. ● The measurement in BTU/h indicates the power consumption of the device when it is fully loaded.
Environmental		
Operating Temperature	0 - 50°C	0 - 50°C
Storage Temperature	-20 - 60°C	-20 - 60°C
Humidity	0-80% RH, Non-Condensing	0-80% RH, Non-Condensing
Physical Properties		
Housing	Metal	Metal
Weight	0.18 kg ( 0.4 lb )	0.18 kg ( 0.4 lb )
Dimensions (L x W x H)	6.86 x 4.44 x 4.00 cm (2.7 x 1.75 x 1.57 in.)	6.86 x 4.44 x 4.00 cm (2.7 x 1.75 x 1.57 in.)
Faceplate Dimensions (L x W x H)	8.60 x 8.60 x 1.60 cm (3.39 x 3.39 x 0.63 in.)	8.60 x 8.60 x 1.60 cm (3.39 x 3.39 x 0.63 in.)
Carton Lot	5 pcs	5 pcs
Note	For some of rack mount products, please note that the standard physical dimensions of WxDxH are expressed using a LxWxH format.	

## Diagram



### **ATEN International Co., Ltd.**

3F., No.125, Sec. 2, Datong Rd., Sijhih District., New Taipei City 221, Taiwan  
 Phone: 886-2-8692-6789 Fax: 886-2-8692-6767  
 www.aten.com E-mail: marketing@aten.com



© Copyright 2015 ATEN® International Co., Ltd.  
 ATEN and the ATEN logo are trademarks of ATEN International Co., Ltd.  
 All rights reserved. All other trademarks are the property of their respective owners.