

KL9116 Offers Space-Saving Solution with Secure Remote Access

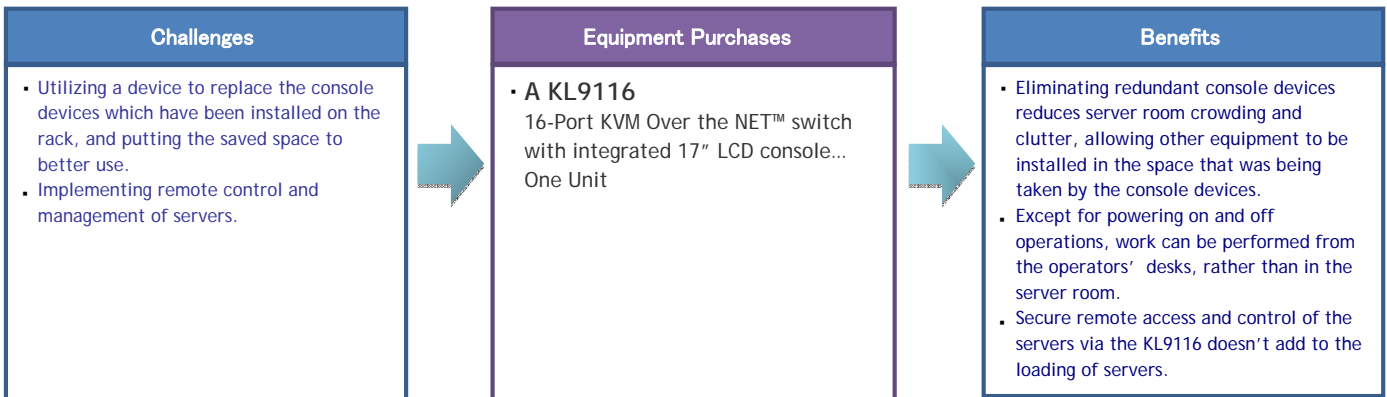


Company: Japan System Create Co., Ltd. (JSC)

Website: <http://www.jsenet.co.jp/>

Japan System Create Co., Ltd. (JSC) is a profession IT service company that focuses on software development and offers configuration, maintenance and management services for Network implementations. They also provide technical support and setup services for testing equipment related to the Network implementation.

JSC went public on NASDAQ Japan in October, 2006. Company employees constantly think about how to “+ One” (Plus One) - offering new and enhanced service to customers is their mission.



Challenges Reducing the space occupied by console devices, and solving the need for remote control of the servers.

In the past, JSC simplified its server management by using a Rack KVM switch solution. The KVM switches were rack mounted to make for a neat and tidy server room environment. Since keyboards, monitors, and mice of the consoles connected to the KVM switches were also installed on the rack, however, there was a problem in that these console devices were taking up a lot of space. This was especially true for the monitors --, which were taking up approximately 1/4 of the entire rack space. Under these circumstances, the original space-saving benefit resulting from rack mounting became lost. Therefore, finding a way to replace all the extra console devices with less equipment was the key point to consider. Another consideration was to take advantage of this opportunity to improve the work environment.

At the same time, the ability to remotely access the servers was felt to be an important issue, since it is neither convenient nor efficient for the operators to have to go to the server room to work on the equipment. Therefore a remote management solution that would make for a more efficient work environment was felt to be an essential requirement when JSC considered purchasing its equipment.

Equipment Purchases Choosing the KL9116 to save space and provide a secure remote access environment.

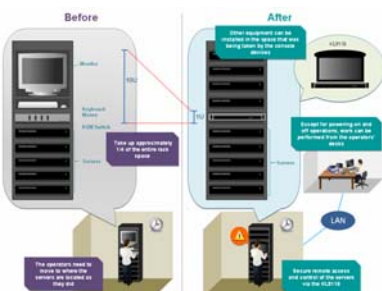


KL9116
16-Port KVM Over the NET™

The ALTUSEN KL9116 allows server room administrators to minimize the number of console devices and to control their servers remotely. The KL9116 features a built-in 17" LCD monitor, keyboard and touchpad with the monitor module and keyboard/touchpad modules being independently retractable. It integrates the LCD console with a 16 port KVM switch that enables operators to control up to 16 attached computers. Since the KL9116 provides an IP-Based solution, operators don't have to be on-site – they can log in and access any of the attached servers from any computer on the Net. By integrating the KVM switch plus the console devices for 16 servers in a single 1U rack-mountable housing, all the space that would be taken up by traditional console devices is saved and can be used more efficiently for other devices.

In addition to providing a remote access solution that is easy and convenient, the KL9116 is also secure due to advanced security features including password protection and multilevel authentication and authorization. To protect the system from unauthorized access, users who try to log in but don't get authenticated are denied access to the KL9116 and the servers connected to it.

Benefits Eliminate wasted rack space and increased work environment efficiency through remote access and operation.



Adopting the KL9116 greatly benefited JSC by eliminating wasted rack space. In the past, a KVM switch and associated console devices ordinarily occupied almost 10U. Now, with the installed KL9116 taking up only 1U, JSC regains 9U of rack space that can be flexibly used for other devices.

In addition, the remote access feature which KL9116 offers has also improved the working environment and increased operator efficiency since most server operations (except for power on/power off) can be performed remotely from anywhere on the NET – whether that is the operator's desk down the hall, or halfway around the world.

Moreover, the KL9116 is a hardware solution. It differs from software solutions -- which may add to the loading of the connected servers -- in that it doesn't affect the computing functionality of the servers, thereby ensuring the reliability of the remote management environment.

Prospect

Utilizing the KL9116's remote access feature minimizes working time. It will be used in other departments.

Utilizing the KL9116's remote access feature enables a user to minimize his working time. The operators don't need to move to where the servers are located as they did in the past. They can control the servers and perform necessary operations directly from their desks.

In addition, after the KL9116 was installed, operators could access multiple servers and control them from anywhere on the Net. With "over-IP" access providing the remote access functionality, the KL9116 can be accessed from anywhere. The system will still operate smoothly and normally, even though server room operations have been moved to a different data center in the future.

At JSC, other departments are still planning their transition to a KVM switch installation. In the future, the KL9116 solution will be applied to them -- and even to the entire company -- to save more rack space and increased working efficiency.

Company Information

Company Name	Japan System Create Co., Ltd. (JSC)
Address	Tokyo Headquarter: The Tokyo Toshima Ku west Ikebukuro 3-27-12 the Ikebukuro waist park building 9F
Main Business	•System Consulting •Software Development •System Operation Control

Installation Diagram

