

## *Law Enforcements Growing Information Systems Solution Managing Data from the Center*



### **Scenario: Police Headquarters Data Center**

With the increasing dependency on technology to solve major crimes, information requirements for analysis and strategic decision making has grown respectively from paper and physical files to a digital format. Given the increasing need of police officers to share information across departments, more and more police districts like the *T Police Headquarters* are setting up larger, more complex information systems centers deployed by their own IT professionals. To house new advanced application and database servers, the *T Police*

*Headquarters' IT division* planned to build a new centralized data center and needed to look for an efficient solution that enables multiple operators to manage up to 300 servers. Since the operation included IT professionals working within the data center, and IT administrators working remotely from buildings outside the data center, the solution required that multiple administrators in different locations have easy access to manage the many servers; locally and remotely, at the same time.

### **ATEN Solution**

Fully understanding the *T Police Department's Data Center* requirements, *ATEN* proposed an integrated solution, as follows:

#### **KN4132 x 16**

32-Port KVM Over the NET™



KN4132 supports up to 5 buses, allowing 1 local and 4 remote user access. Remote operators are able to monitor and access the entire enterprise data center over the Internet using a web-based browser. With advanced features – Message Board, Panel Array Mode, Mouse DynaSync™, and Adapter ID, the KN4116 allows you to upgrade your IT management efficiency.

#### **KM0532 x 1**

5-Console 32-Port Matrix KVM Switch



ATEN KM0532 Matrix KVM Switches are designed for modern data centers that require reliable, high security access and control of multiple servers. With automatic skew compensation and Auto Signal Compensation (ASC) features, KM0532 provides greatly enhanced video quality via Cat 5e/6 cabling – 1280x1024 @60Hz for up to 300 meters.

#### **CC2000 x 1**

Control Center Over the NET™



ATEN's CC2000 Management Software provides IT administrators with the tools they need to access and control their entire distributed data center environment.

**CL5800 x 4**

Dual Rail LCD PS/2-USB Console



The CL5800 is a KVM console module that serves as the front-end for standard KVM switches. It features an integrated 17" LCD panel, full keyboard and touchpad in a 1U, rack-mountable housing. With dual rail design, the CL5800 allows LCD monitor and keyboard / touch pad modules to operate independently.

**KA9120 x 16 ; KA7170 x 512**

KVM Adapter Cables



**KA7230 x 4**

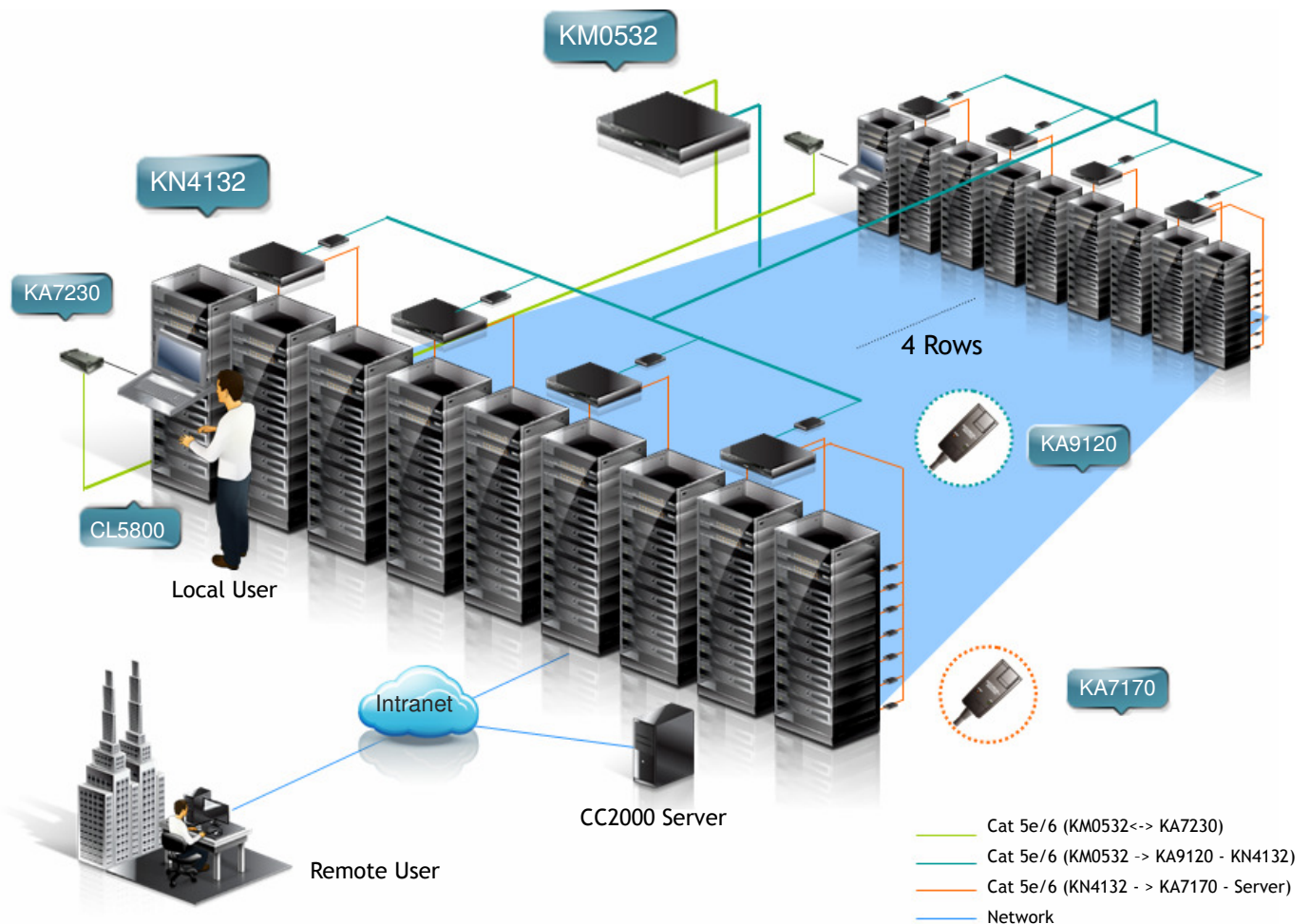
PS/2-USB Console Module

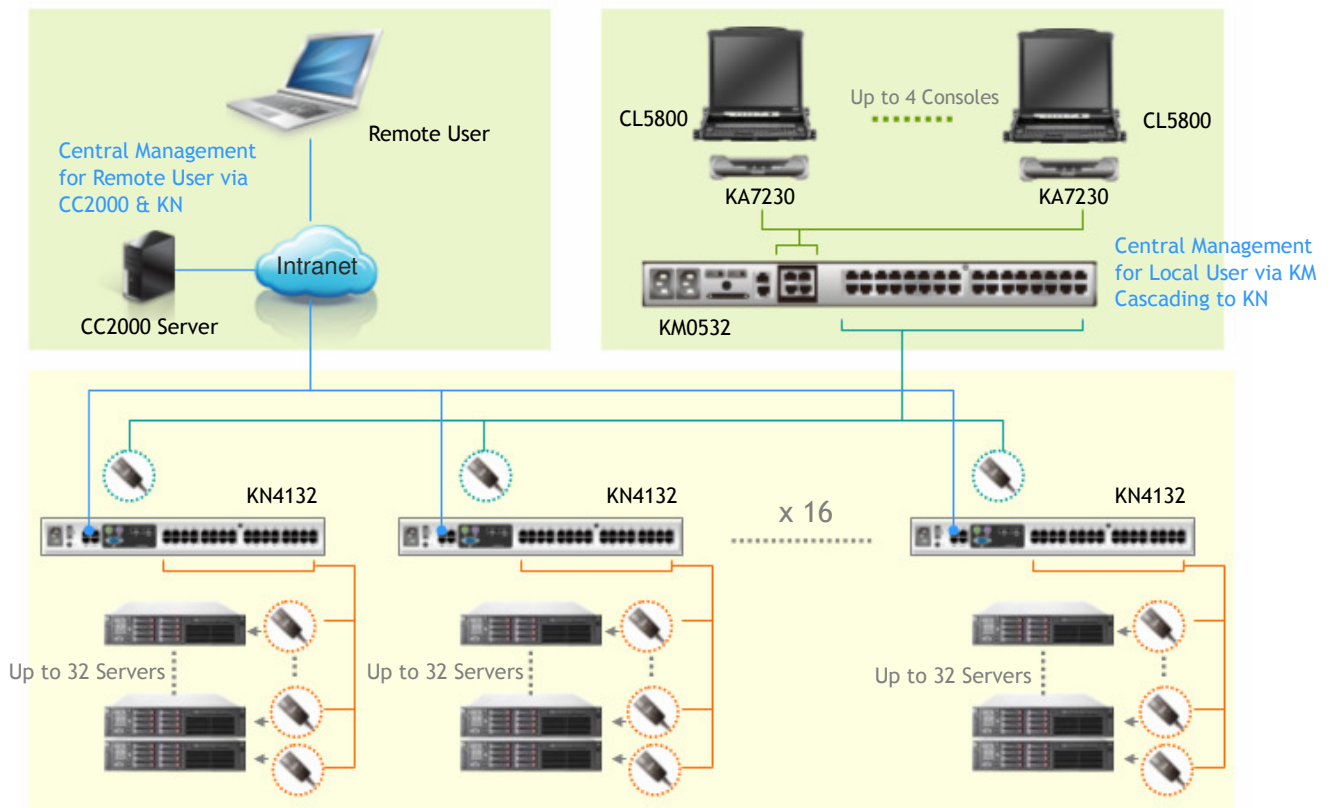


ATEN Matrix KVM Switch and KVM Over the NET™ utilize KVM adapter cables for the final linkup – using KVM Adapter Cables to link the switch to the servers. The Matrix KVM switch also utilizes console module to link the console devices to the switch.

**Setup**

ATEN's KN4132, KM0532, CL5800 and CC2000 offered the police departments system administrators direct effortless access to manage servers. Advanced features now allow remote desktop control of multiple servers simultaneously from a single login session. With a KVM based setup connections are always quick, easy, and reliable with the functionality IT Administrators dream of.





## Benefits

### **Boost Efficiency and Manpower**

Enable IT operators to control up to 512 servers conveniently and efficiently from either the data center or any remote location. IT administrators no longer have to be tied to the data center all day; they can conveniently manage the entire installation from their desktop.

### **Simplify Management**

With an integrated design for both, the operators are able to manage all servers through a single portal – on the CC2000's Centralized management software for remote users and the KM0532's GUI for local users.

### **Better User Experience**

KM0532 cascading to KN4132 provides local users a better user experience of responsiveness without data compression for network transmission, superior video quality with higher color depth, and no double-mouse-cursor annoying

### **Flexible Scalability**

Flexible expansion enable you to easily add additional CL5800 into the installation in an expanding server room; or add more KN4132 via KVM Adapter Cables to existing setups to increase efficiency and manage more servers on your installation.

### **Reduce Cabling Cost**

By the use of RJ-45 connectors and Cat 5e/6 cabling; this integrated solution offers efficient cabling installations, eliminating traditional bulky cables, and making a more reliable throughput via neat, efficient, and uncluttered work environments.

### **Integrated Control of different systems**

Supports multiplatform servers via optional KVM adapter cables – allowing any combination of PC, Mac or Sun computer platforms; allowing serial devices to coexist on the installation.

### **Conveniently Monitoring**

With Panel Array Mode™ support, remote IT operators can monitor the screen displays of up to 32 systems for status monitoring. In addition, utilizing the dual rail design of LCD console, the local users can hide away the keyboard module when not in use, while the LCD monitor reclines against the rack for continuous monitoring of computers.

### **Efficient Collaboration**

In order to successfully complete tasks, the IT operators may need to work in collaboration with each other. The KN4132 allows a operator to exclusively control a system or share access with other operators.