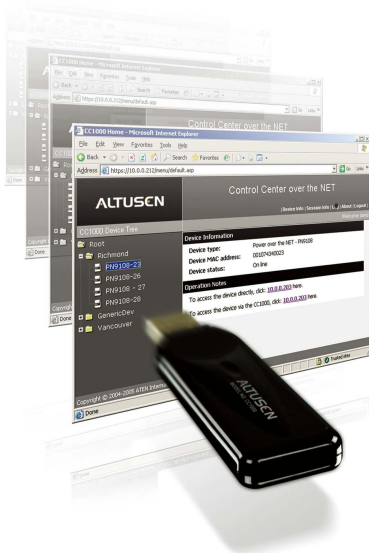


## CC1000

Control Center Over the NET™



The CC1000 Control Center Over the NET™ provides centralized access, administration, and management of your data centers - local and worldwide at anytime, from anywhere. This software based solution consolidates the management of your ALTUSCN "Over the NET™" devices, providing a convenient, flexible way to meet your IT infrastructure needs.

- \* **Web Browser - Single IP Access**
- \* **Tight Security Regulates User Access and Control**
- \* **Scalability Expands to Fit Your Individual Needs**
- \* **Monitoring, Diagnosis, and Resolution of Network Problems Made Easy**

- **Dual Access - Direct or via the CC1000**
- **Manage your servers anytime, anywhere**
- **Adding groups, and devices, couldn't be simpler**



## Fonctionnalités

- **Secure Centralized Management**
  - Complete control of your enterprise - consolidates the management of all ALTUSEN / ATEN IT devices
  - Single IP address to securely access every device on the installation
  - All devices are integrated into a single tree view for centralized access, administration, and management of a worldwide network from anywhere at anytime
  - Web browser access over Internet/Intranet provides secure remote connections to all installed devices
  - Windows and Java versions for multiplatform support
- **Highlights**
  - Ideal for enterprises with one or more data centers, or a number of remote offices
  - Easy to use - intuitive browser-based GUI for simplified access to IT equipment in global data centers and remote offices
  - Scalability - Multi-user access to hundreds of ALTUSEN / ATEN IT appliances and more than ten thousand servers and serially controlled devices
  - A single login provides secure, centralized management of multiple data centers, branch offices and remote locations
  - Provides centralized management, Role-Based Access and Control(RBAC), and Reporting Capabilities
- **Powerful Security**
  - Powerful security features that enable integration with Active Directory external authentication tools
  - Robust security policies for individual user authorization to the port level
  - 128-bit SSL encryption of all data on the network
  - Flexible session time-outs
  - "Strong" user name and password authentication
- **Network Interfaces**
  - TCP/IP
  - HTTP / HTTPS
  - SSL
  - DNS
  - LDAP / LDAPS
- **Software Features**
  - All features - including access, configuration and administration accessible
  - Powerful portal-like interface provides customized permission-based groupings and device views
  - ALTUSEN / ATEN IT appliance auto-discovery with device-availability status, and alarms
  - Java client for multiplatform access
- **Access and Control from Anywhere at Anytime**
  - An array of flexible logging and reporting options with audit trails for diagnostics and troubleshooting
  - View and manage active user sessions and active ports in real time
- Multiplatform support: Windows 2000 Server/2003 Server/XP/ [Vista](#), RHEL AS 4.0 and Fedora Core 4.
- For more information about KVMs which can connect to CC1000, see [Compatible KVM Table](#)

## ATEN International Co., Ltd.

3F., No.125, Sec. 2, Datong Rd., Sijhih District., New Taipei City 221, Taiwan  
Phone: 886-2-8692-6789 Fax: 886-2-8692-6767  
[www.aten.com](http://www.aten.com) E-mail: [marketing@aten.com](mailto:marketing@aten.com)



© Copyright 2015 ATEN® International Co., Ltd.  
ATEN and the ATEN logo are trademarks of ATEN International Co., Ltd.  
All rights reserved. All other trademarks are the property of their respective owners.