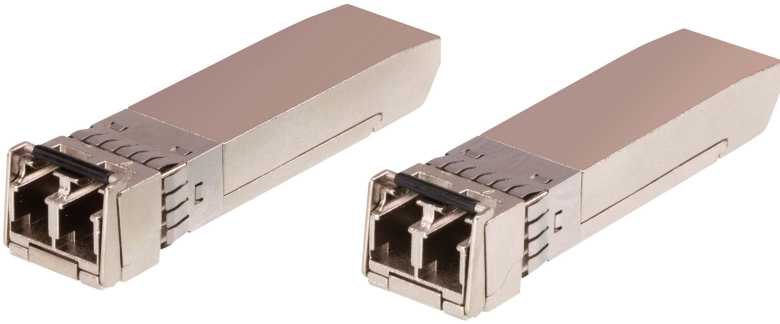


## 2A-141G

10G Multi-Mode/300M Fiber SFP+ Module



The 2A-141G 10G Multi-Mode/300M Fiber SFP+ Module is designed for use in 10GbE Ethernet environment that allows you to connect a multi-mode Gigabit Ethernet network cable to a network switch's SFP+ port. The 2A-141G provides 10GbE connectivity at distances up to 300 meters. As a hotpluggable module with a standard duplex connector for fiber communications, the 2A-141G works with multi-mode-fiber (MMF) connections and operates at a nominal wavelength of 850 nm. This makes the module a cost-effective and highperformance transceiver to substantially increase the span of a compatible network switch.

### Features

- Extend your network connectivity up to 300 meters
- Compliant with IEEE 802.3ae standards
- Compliant with SFF-8431 MSA Digital Diagnostic Monitor (DDM)
- Hot pluggable
- Low power consumption
- Operation Temperature from 0° C to 70° C
- RoHS compliant

**Specification**

Fiber Optics	
Data Rate	10 Gbps
Operating Distance	300 m
Fiber Type	Multi Mode
Connector Type	LC
DDM	Yes
Environmental	
Operating Temperature	0-70°C
Storage Temperature	-40-85°C
Physical Properties	
Weight	0.02 kg ( 0.04 lb )
Dimensions (L x W x H)	5.59 x 1.46 x 1.30 cm (2.2 x 0.57 x 0.51 in.)
Note	For some of rack mount products, please note that the standard physical dimensions of WxDxH are expressed using a LxWxH format.

**ATEN International Co., Ltd.**

3F., No.125, Sec. 2, Datong Rd., Sijhih District., New Taipei City 221, Taiwan

Phone: 886-2-8692-6789 Fax: 886-2-8692-6767

www.aten.com E-mail: marketing@aten.com



© Copyright 2015 ATEN® International Co., Ltd.  
ATEN and the ATEN logo are trademarks of ATEN International Co., Ltd.  
All rights reserved. All other trademarks are the property of their  
respective owners.