

VK224

4-Port Serial Expansion Box



The VK224 4-Port Serial Expansion Box provides four additional bi-directional RS-232 / 422 / 485 serial ports for a flexible expansion of the ATEN Control System. This allows users to control additional serial devices in an environment where more serial devices are required. With the advantage of an Ethernet-based connection, the expansion box can be easily connected to the [VK2100](#) Control Box via a LAN connection from a variety of locations across a network.

Features

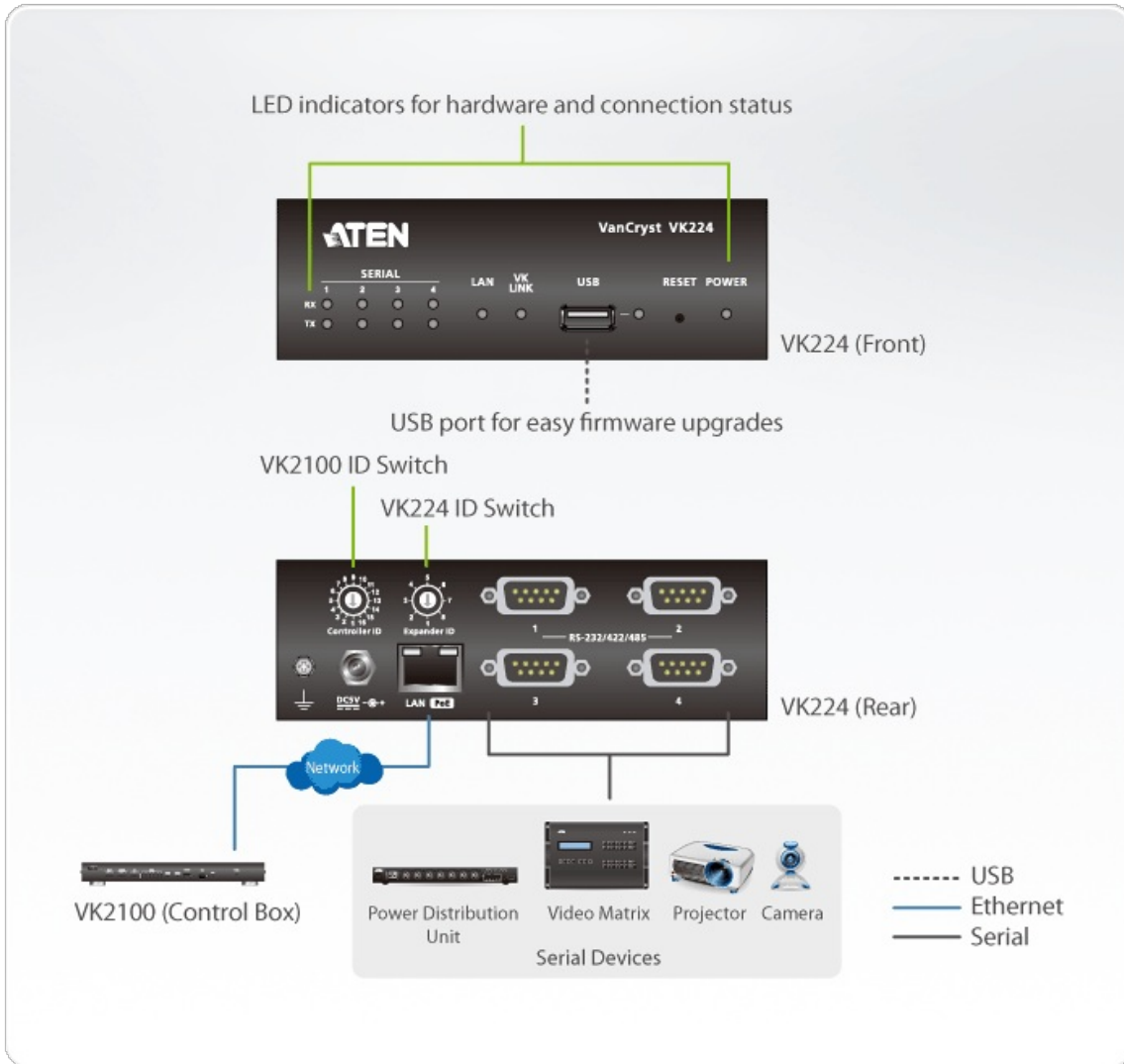
- Provides 4 bi-directional RS-232/422/485 serial ports to expand the ATEN Control System
- Up to eight VK224 expansion boxes can be added to a single Control Box
- Flexible Deployment: Connects to a Control Box via an Ethernet connection
- ID Switch pairs the VK224 with a controller to instantly configure the network settings
- [Supports Power over Ethernet \(PoE\) or DC power supply](#)
- Firmware upgradable through USB or Web interface

Specification

Interfaces																			
Serial	<ul style="list-style-type: none"> • 4 x Programmable Bi-directional RS-232/422/485 Port (4 x DB9 Male Connector, configurable via pin assignments); <ul style="list-style-type: none"> - Baud Rate: 300 to 115200 (default: 9600); - Data Bit: 8 (default) or 7; - Stop Bit: 1 (default) or 2; - Parity: None (default), Even or Odd; - Flow Control: None (default) RTS/CTS <table border="1"> <thead> <tr> <th>RS-232</th> <th>RS-422</th> <th>RS-485</th> </tr> </thead> <tbody> <tr> <td>Pin2: RX</td> <td>Pin 1:RX-</td> <td>Pin3:D+</td> </tr> <tr> <td>Pin3: TX</td> <td>Pin 2: RX+</td> <td>Pin 4:D-</td> </tr> <tr> <td>Pin 5: GND</td> <td>Pin 3: TX+</td> <td></td> </tr> <tr> <td>Pin 7: RTS</td> <td>Pin 4: TX-</td> <td></td> </tr> <tr> <td>Pin 8: CTS</td> <td>Pin 5: GND</td> <td></td> </tr> </tbody> </table>	RS-232	RS-422	RS-485	Pin2: RX	Pin 1:RX-	Pin3:D+	Pin3: TX	Pin 2: RX+	Pin 4:D-	Pin 5: GND	Pin 3: TX+		Pin 7: RTS	Pin 4: TX-		Pin 8: CTS	Pin 5: GND	
RS-232	RS-422	RS-485																	
Pin2: RX	Pin 1:RX-	Pin3:D+																	
Pin3: TX	Pin 2: RX+	Pin 4:D-																	
Pin 5: GND	Pin 3: TX+																		
Pin 7: RTS	Pin 4: TX-																		
Pin 8: CTS	Pin 5: GND																		

Ethernet	<ul style="list-style-type: none"> • 1 x RJ-45 Female, 10/100Base-T • Supported Protocol: ARP, ICMP, TCP/IP, DHCP, HTTPS, SSH • DHCP-enabled. The following default IP settings will be used if no IP is assigned within 30 seconds: IP: 192.168.0.60 Subnet Mask: 255.255.255.0
Switches	
Controller ID	1 x 16-segment Switch
Expander ID	1 x 8-segment Switch
Reset Button	1 x Semi-recessed Pushbutton
USB	1 x USB Type A
Power Consumption	DC5V:3.8W:28BTU DC48V:4.75W:33BTU
Environmental	
Operating Temperature	0 - 50°C
Storage Temperature	-20 - 60°C
Humidity	0 - 80% RH, Non-Condensing
Physical Properties	
Housing	Metal
Weight	0.45 kg (0.99 lb)
Dimensions (L x W x H)	13.00 x 7.58 x 4.20 cm (5.12 x 2.98 x 1.65 in.)
Note	For some of rack mount products, please note that the standard physical dimensions of WxDxH are expressed using a LxWxH format.

Diagram



ATEN International Co., Ltd.

3F., No.125, Sec. 2, Datong Rd., Sijhih District., New Taipei City 221, Taiwan
 Phone: 886-2-8692-6789 Fax: 886-2-8692-6767
 www.aten.com E-mail: marketing@aten.com



© Copyright 2015 ATEN® International Co., Ltd.
 ATEN and the ATEN logo are trademarks of ATEN International Co., Ltd.
 All rights reserved. All other trademarks are the property of their respective owners.