

RC2200

Slide and Rotate Rack



Flexible and Stable Structure

Unlocking
Additional Space

360°
360-degree
Slide and Rotate Rack

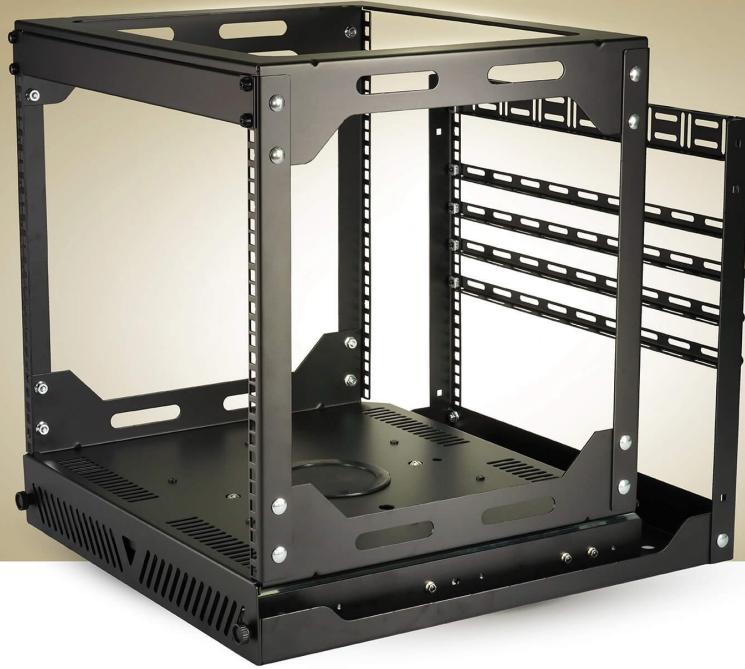


The ATEN Slide and Rotate Rack is designed with an open-rack structure and features smooth pull-out and 360° rotation capabilities – making equipment installation and cable management effortless.

Its space-saving, flexible structure fits perfectly inside cabinets, enabling the installation of additional equipment within a smaller footprint, streamlined cabling, and improved airflow for enhanced device longevity.



EIA/ECA-310-E



Sturdy and Stable

Engineered to meet the latest EIA / ECA-310-E standards, the ATEN Slide and Rotate Rack boasts a reinforced frame that delivers exceptional stability and dependable support – ensuring your equipment stays secure and performs at its best.

Streamlined Access with An Open Design

The open-frame architecture offers unmatched convenience and speed when installing or adjusting equipment – making it the ideal choice for AV setups that demand frequent updates, reconfigurations, or quick swaps.



Effortless Flexibility with 360° Rotation

Designed for ultimate convenience, the rack features built-in ball spring plungers that allow smooth 360° rotation and secure locking at 0°, 90°, 180°, and 270°. Perfect for cabinet installations, it maximizes space, boosts airflow for better cooling, and makes maintenance a breeze. Whether in offices, meeting rooms, classrooms, or AV suites, it's the smart solution for dynamic environments.

High Load-Bearing Capacity

The heavy-duty turntable is designed to handle loads of up to 68 kg, ensuring stability for a wide range of apparatus and devices. Even with prolonged usage, its structure remains sturdy without deformation and loosening.





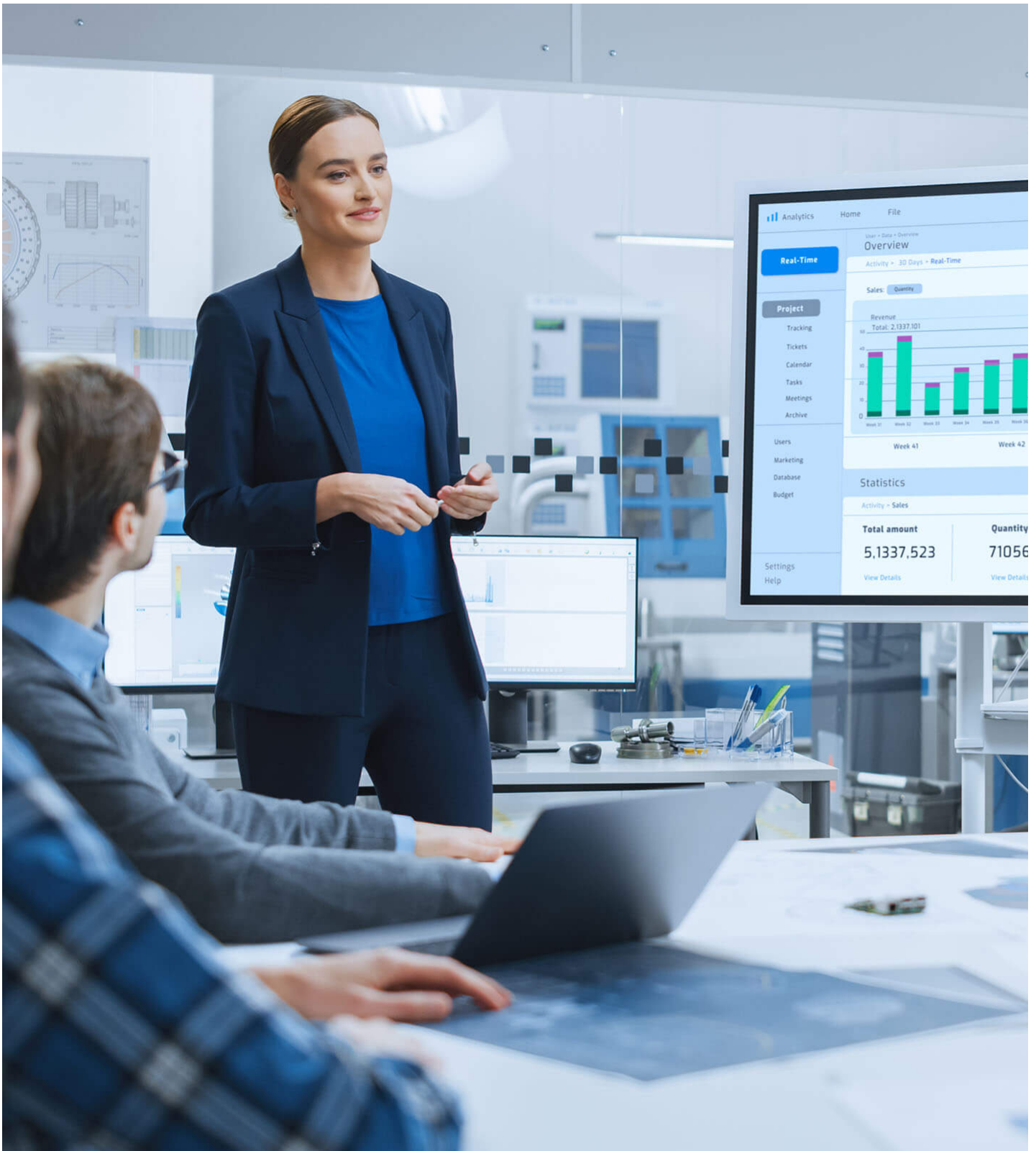
Easy Cable Management

The rear cable management bar makes it convenient to organize cables, maintaining a tidy space and clean appearance.

Applications

The flexibility and agility of the HURV-SD make it an ideal addition for the following applications:

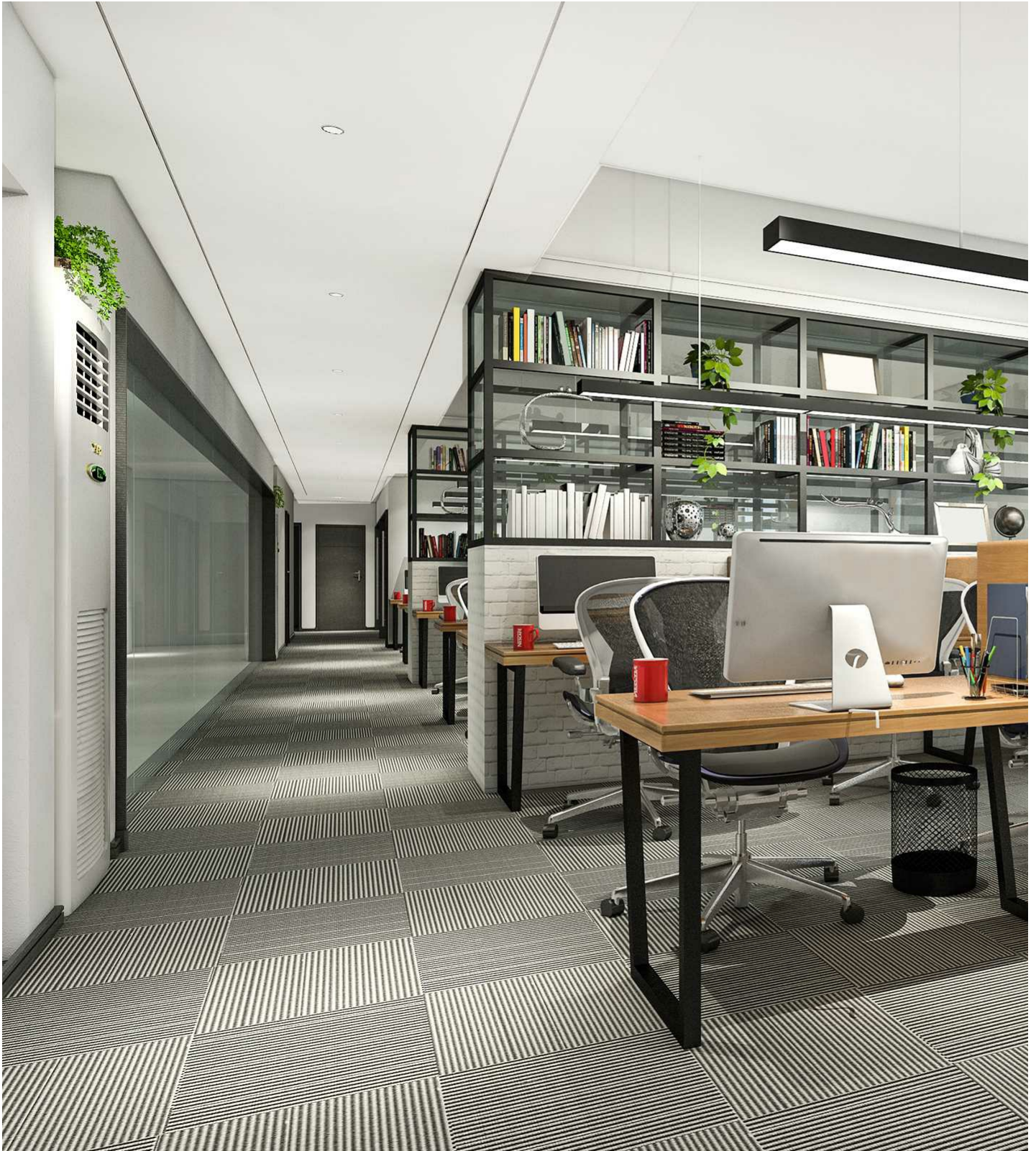
- 1.
- 2.
- 3.



Meeting Rooms



Classrooms



Office

[Previous](#) [Next](#)

Talk to Our Experts

If you prefer to have ATEN contact you, please complete the form and a representative will be in touch with you shortly

First Name *
Last Name *
- Country *
Company *
Email *
Phone Number *
- Customer Type *
Job Title *

Features

ATEN has over 30 years of experience in rack design and manufacturing, with certifications including UL in the United States and Canada, CE in the European Union, and multiple domestic and international patents (certificate numbers: M377678, M385174, M513193, etc.). All ATEN's racks are fully manufactured in Taiwan, adhering strictly to the EIA/ECA-310-E standards. Whether for cabinet structure or intelligent accessories, ATEN's racks meet the stringent requirements of data centers and IDC rooms for efficient energy management and security protection.

The ATEN Slide and Rotate Rack adopts open-frame design, featuring pull-out and 360° rotation functions, making it easy to operate when installing equipment or connecting cables. Its flexible structure is perfect for installation inside cabinets, saving valuable space.

- Designed to EIA/ECA-310-E standards, the robust frame ensures stability and reliable support for installed equipment
- The open-frame structure enables easier and faster equipment installation and adjustments
- The built-in spherical spring plunger allows the rack to rotate 360° and lock at 0°, 90°, 180°, and 270° positions, making it perfect for cabinet installations and space-saving. It is ideal for offices, meeting rooms, classrooms, or AV rooms
- The heavy-duty turntable supports up to 68 kg, ensuring stable support for equipment and preventing deformation or loosening over time
- The rear cable management bar keeps cables organized, maintaining a clean and neat space

Specification

Function	RC2200	RC2201	RC2202
Physical Properties			
Rack Height (U Spaces)	10U	12U	15U
Internal Height	448 mm	536 mm	669 mm
Overall Height	537 mm	626 mm	759 mm
Overall Depth	570 mm	570 mm	570 mm
Overall Width	491 mm	491 mm	491 mm
Color	Black (RC2200B)	Black (RC2201B)	Black (RC2202B)
Enclosure Frame	SPCC	SPCC	SPCC
19" EIA Rails	SPCC	SPCC	SPCC
Weight Loading (Static)	68 kg	68 kg	68 kg

ATEN International Co., Ltd.

3F., No.125, Sec. 2, Datong Rd., Sijhih District., New Taipei City 221, Taiwan
Phone: 886-2-8692-6789 Fax: 886-2-8692-6767
www.aten.com E-mail: marketing@aten.com



© Copyright 2015 ATEN® International Co., Ltd.
ATEN and the ATEN logo are trademarks of ATEN International Co., Ltd.
All rights reserved. All other trademarks are the property of their respective owners.