

## CE610

USB DVI HDBaseT Extender (1920 x 1200@100m)  
(HDBaseT Class A)



The CE610 USB 2.0 DVI [KVM Extender](#) is a DVI and USB Extender that supports ExtremeUSB® and HDBaseT technology. The CE610 USB 2.0 DVI [KVM Extender](#) can extend DVI and USB 2.0 signals up to 300 ft (100 m) from the source using a single Cat 5e/6 cable.

The CE610 is equipped with USB connectors which allow you to extend any USB device between the units. The USB functionality provides not only peripheral sharing but also provides support for touch panel control and file transfer. The CE610 is ideal for situations where touch panel is required, such as transportation centers, medical facilities, shopping malls, industrial kiosks, and when synchronizing for files/ folders between portable and desktop computers are required.



### Features

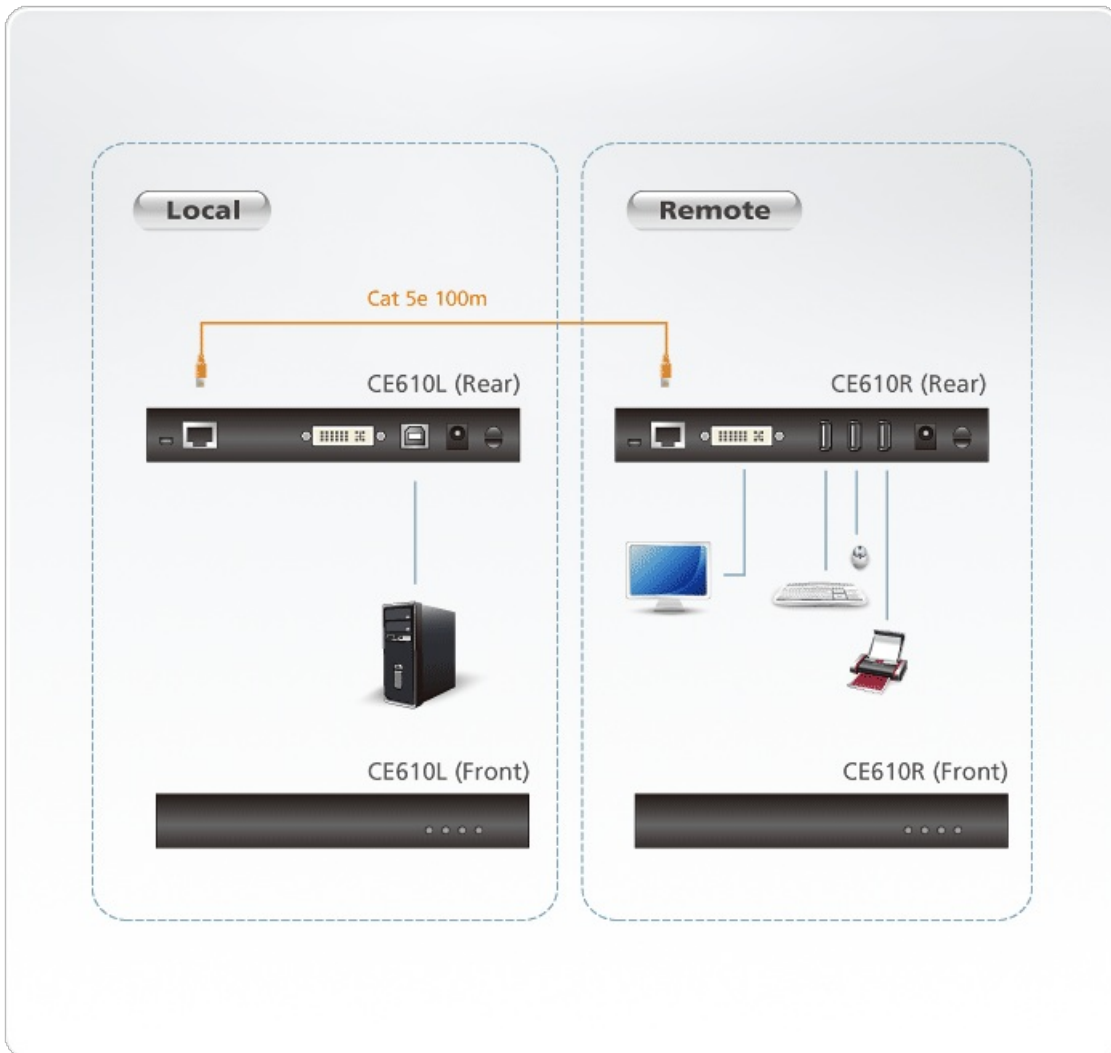
- Uses a single Cat 5e cable to connect the local and remote units
- Allows access to a computer or KVM installation from a remote console
- Superior Video Quality – up to 1920 x 1200 @ 60 Hz at 100 m
- Anti-jamming - resists signal interference during high-quality video transmissions using HDBaseT technology
- ExtremeUSB® - supports transparent USB 2.0 signals and true plug-and-play (no software or drivers required)
- Supports USB 1.1 web cameras
- USB 2.0 Support\* – connects devices such as keyboard, mouse, flash drive, printer, touch panel and other USB devices which require moderate amounts of bandwidth
- Extends local PC Video/Keyboard/Mouse to Remote side
- Built-in 8KV/15KV ESD protection (Contact voltage 8KV; Air voltage 15KV)
- Works with all major operating systems: Windows®, OS X®, and Linux®

\* Note: The CE610 supports a maximum combined USB transfer rate of 30 Mbps for attached USB devices.

## Specifications

Function	CE610L	CE610R
Connectors		
Video In	1 x DVI-D Female (White)	N/A
Video Output	N/A	1 x DVI-D Female (White)
USB Port	1 x USB Type B Female (White)	3 x USB Type A Female (White)
Power	1 x DC Jack	1 x DC Jack
Firmware Upgrade	1 x mini-USB	1 x mini-USB
Unit To Unit	1 x RJ-45 Female (Black)	1 x RJ-45 Female (Black)
LEDs		
Power	1 (Green)	1 (Green)
Link	1 (Green)	1 (Green)
USB	1 (Green)	1 (Green)
Video	1 (Green)	1 (Green)
USB	USB 2.0 (Transfer Rate: Up to 30Mbps)	USB 2.0 (Transfer Rate: Up to 30Mbps)
Video	1920 x 1200 @ 60Hz (100 m)	1920 x 1200 @ 60Hz (100 m)
Power Consumption	DC 5V, 15 W  Note: ● The measurement in Watts indicates the typical power consumption of the device with no external loading. ● The measurement in BTU/h indicates the power consumption of the device when it is fully loaded.	DC 5V, 15 W  Note: ● The measurement in Watts indicates the typical power consumption of the device with no external loading. ● The measurement in BTU/h indicates the power consumption of the device when it is fully loaded.
Environmental		
Operating Temperature	0–50°C	0–50°C
Storage Temperature	-20–60°C	-20–60°C
Humidity	0–80% RH, Non-condensing	0–80% RH, Non-condensing
Physical Properties		
Housing	Metal	Metal
Weight	0.62 kg ( 1.37 lb )	0.62 kg ( 1.37 lb )
Dimensions (L x W x H)	18.20 x 11.79 x 2.87 cm (7.17 x 4.64 x 1.13 in.)	18.20 x 11.79 x 2.87 cm (7.17 x 4.64 x 1.13 in.)
Note	For some of rack mount products, please note that the standard physical dimensions of WxDxH are expressed using a LxWxH format.	

# Diagram



## ATEN International Co., Ltd.

3F., No.125, Sec. 2, Datong Rd., Sijhih District., New Taipei City 221, Taiwan  
 Phone: 886-2-8692-6789 Fax: 886-2-8692-6767  
 www.aten.com E-mail: marketing@aten.com



© Copyright 2015 ATEN® International Co., Ltd.  
 ATEN and the ATEN logo are trademarks of ATEN International Co., Ltd.  
 All rights reserved. All other trademarks are the property of their  
 respective owners.