

CE700A

USB VGA Cat 5 KVM Extender (1280 x 1024@150m)



The CE700A is a USB [KVM Extender](#) with superior video quality and built-in ESD and surge protection that allows access to a computer system up to 150 meters away from a remote USB console (USB keyboard, monitor, and USB mouse).

The CE700A improves on previous designs by: 1) incorporating 8KV/15KV ESD protection and 2KV surge protection; 2) providing superior video quality - up to 1920 x 1200 resolution; 3) using inexpensive Cat 5e cable, instead of bulkier, more expensive, standard cables, for a much neater, more convenient, more reliable data transfer connection; 4) it is able to sense the distance to the system and automatically adjusts the gain accordingly; and 5) it features a custom ASIC to ensure the utmost in reliability and compatibility.

Features

- Cat 5e cable connects the Local and Remote Units - up to 150m apart
- Dual console operation - control your system from both the local and remote USB keyboard, monitor, and mouse consoles
- Built-in ASIC for greater reliability and compatibility
- Auto Signal Compensation (ASC)
- USB Keyboard and USB Mouse Ports
- USB overcurrent detection and prevention
- Pushbutton operating mode selection (Local Unit only) - select between Local and Auto operating modes.
- Built-in 8KV/15KV ESD protection (Contact voltage 8KV; Air voltage 15KV) and 2KV surge protection
- Automatic gain control - adjusts signal strength to compensate for distance
- High resolution video - up to 1920 x 1200@60Hz (30m); 1600 x 1200@60Hz (100m); 1280 x 1024@60Hz (150m)
- Supports Wide Screen formats *
- Supports VGA, SVGA, SXGA, UXGA, WUXGA and multisyncmonitors; local monitor supports DDC; DDC2; DDC2B
- Rack mountableEasy to install - no software required - connecting cables to the devices is all it takes
- Multiplatform support - Windows, Linux

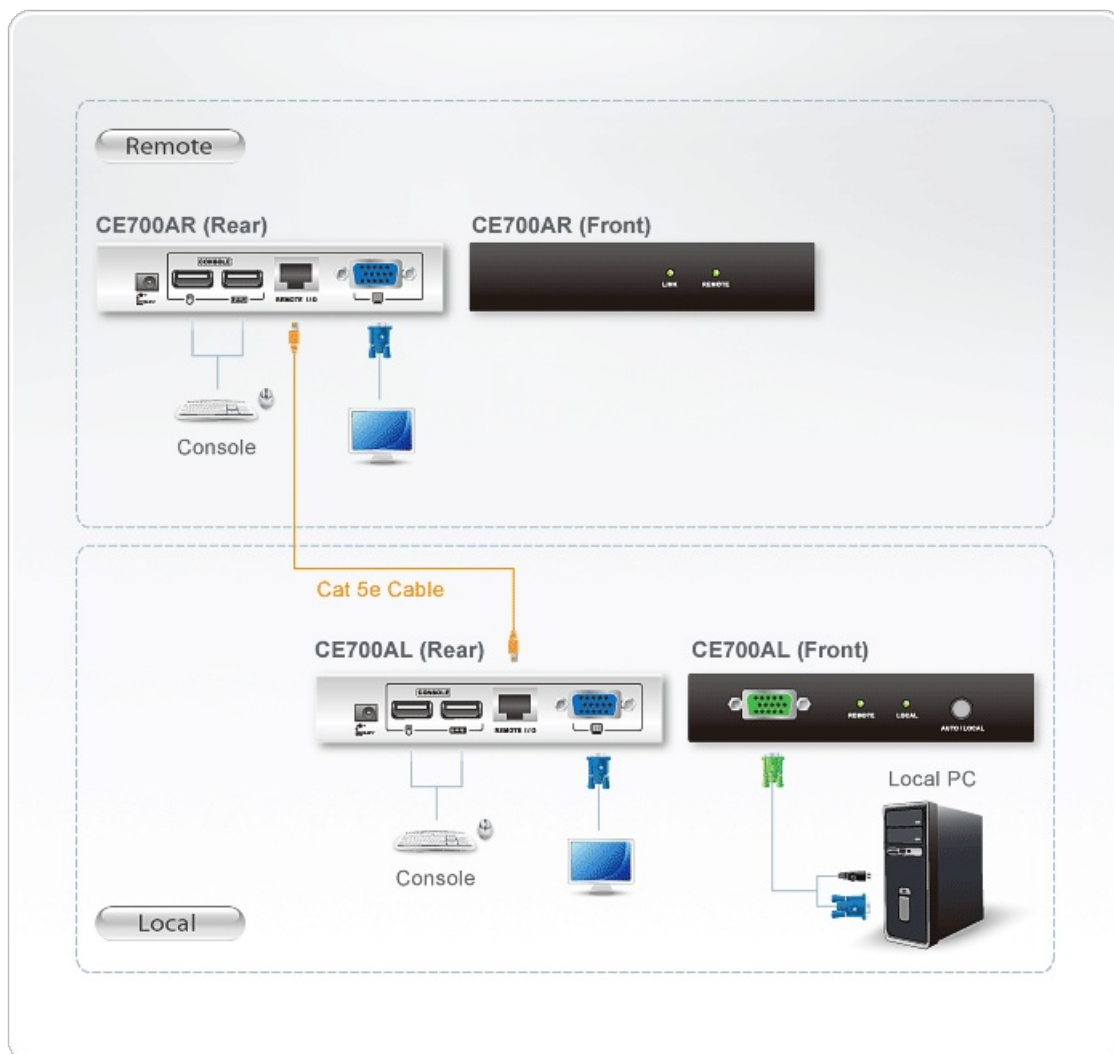
* The EDID data for a widescreen is sent from the local video output port. For widescreen modes and displays connect the monitor to the local video output port or use an ATEN EDID emulator.

Specifications

Function	CE700AL	CE700AR
Connectors		
Console Ports	2 x USB Type A Female (White) 1 x HDB-15 Female (Blue)	2 x USB Type A Female (White) 1 x HDB-15 Female (Blue)
KVM Ports	1 x SPHD-17 Female (Green)	N/A
Unit To Unit	1 x RJ-45 Female (Black)	1 x RJ-45 Female (Black)

Power	1 x DC Jack (Black)	1 x DC Jack (Black)
Pushbuttons		
Operating Mode Selection	1 x Pushbutton	N/A
LEDs		
Local	1 (Green)	N/A
Remote	1 (Green)	1 (Green)
Link	N/A	1 (Green)
Emulation		
Keyboard / Mouse	USB	USB
Power Consumption	DC5.3V:2.17W:14BTU/h Note: ● The measurement in Watts indicates the typical power consumption of the device with no external loading. ● The measurement in BTU/h indicates the power consumption of the device when it is fully loaded.	DC5.3V:1.59W:12BTU/h Note: ● The measurement in Watts indicates the typical power consumption of the device with no external loading. ● The measurement in BTU/h indicates the power consumption of the device when it is fully loaded.
Video	1920 x 1200 @ 60Hz (30m) 1600 x 1200 @ 60Hz (100m) 1280 x 1024 @ 60Hz (150m)	1920 x 1200 @ 60Hz (30m) 1600 x 1200 @ 60Hz (100m) 1280 x 1024 @ 60Hz (150m)
Environmental		
Operating Temperature	0 - 50°C	0 - 50°C
Storage Temperature	-20 - 60°C	-20 - 60°C
Humidity	0-80% RH, Non-condensing	0-80% RH, Non-condensing
Physical Properties		
Housing	Metal	Metal
Weight	0.33 kg (0.73 lb)	0.32 kg (0.7 lb)
Dimensions (L x W x H)	12.70 x 8.65 x 2.50 cm (5 x 3.41 x 0.98 in.)	12.70 x 8.14 x 2.50 cm (5 x 3.2 x 0.98 in.)
Note	For some of rack mount products, please note that the standard physical dimensions of WxDxH are expressed using a LxWxH format.	

Diagram



ATEN International Co., Ltd.

3F, No.125, Sec. 2, Datong Rd., Sijhih District., New Taipei City 221, Taiwan
 Phone: 886-2-8692-6789 Fax: 886-2-8692-6767
 www.aten.com E-mail: marketing@aten.com



© Copyright 2015 ATEN® International Co., Ltd.
 ATEN and the ATEN logo are trademarks of ATEN International Co., Ltd.
 All rights reserved. All other trademarks are the property of their
 respective owners.