

CN9600

1-Local/Remote Share Access Single Port DVI KVM over IP Switch



How to set up ATEN Single-port KVM over IP Switches (CN Series) for remote work





Reinforcing Remote Work

Dual LAN / Power Sustain Uninterrupted Operations



CN9600 ▲

1-Local/Remote Share Access Single Port DVI KVM over IP Switch

Secure Your New Normal with a Direct Hack-proof Connection

The CN9600 provides over-IP capability for remote access to a dedicated PC/server via a direct BIOS-level, hack-proof network connection, as well as visual excellence up to 1920 x 1200 @ 60 Hz at both local and remote consoles by utilizing an FPGA graphics processor. It allows for secured [remote access](#) to audio, video, and [virtual media](#), facilitating instant file sharing and system updates over the network without the need for any extra software installation or configuration.

The CN9600 KVM over IP switch is ideal for global organizations and companies with several office locations by bridging local and remote workplaces with a seamless connection without any restriction or loss in productivity. It is a secure and practical solution to help keep businesses afloat during a downturn or global crises.



LAN/Power Redundancy



Audio Enabled



Virtual Media



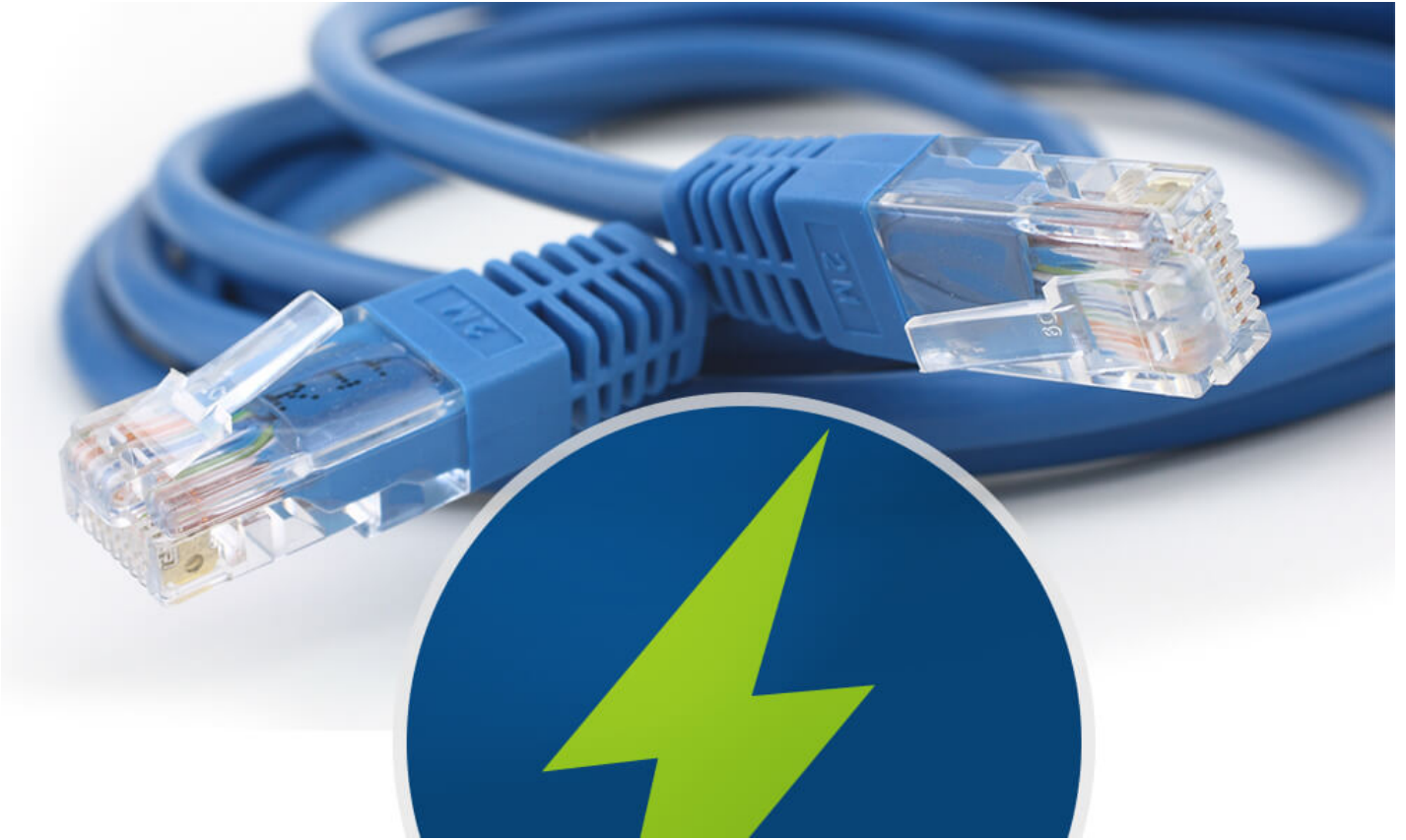
Virtual Reboot

**Security Guarded Remote Access, Wherever You Are**

The CN9600 provides a direct BIOS-level connection to the dedicated PC/server to allow for instant [remote access](#) from different locations without requiring any extra software installation or configuration.

Dual LAN / Power Redundancy

The CN9600 is equipped with dual LAN / power connectivity that strengthens system reliability by maintaining uninterrupted operations during any contingency. Power connectors are fastened with screw locks to ensure robust power failover, and power status can be identified easily via the LED indicators.



Contact Us

Get a quote for this product or get in touch with our sales experts

[Get Quote](#)

[Contact Sales](#)



External Storage Drive

Virtual Media Support for Prompt System Updates

The CN9600 enables authorized [virtual media](#) support to run file applications and software installations over the network, and this is especially useful for diagnosing and troubleshooting network and BIOS issues, as well as performing software updates and patches to keep your system up-to-date.

Applications

The CN9600 is ideally suited for use in control rooms and server rooms of diverse industries, as well as work-from-home scenarios.



Control Room



Server Room



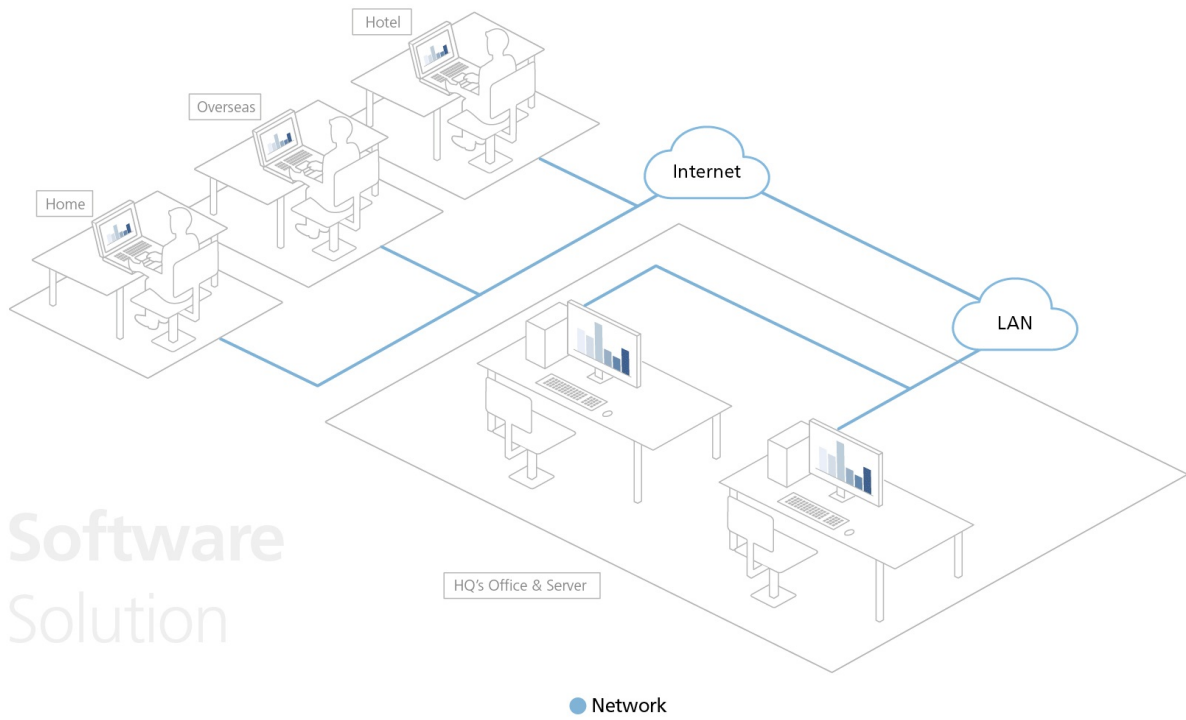
Government



Work from Home

Hack-proof Remote Access Solution in Action

Unlike third-party solutions, such as RDP (Remote Desktop Protocol) and [VNC](#) (Virtual Network Computing), a KVM over IP switch does not require any additional driver/software and can operate independently of a functional operating system when the PC/server is in its BIOS-level state. KVM access to the PC/server is built upon a direct connection with the keyboard, video and mouse, while the communication between the PC/server and the remote workstation is securely strengthened with encryption. This hack-proof hardware-based [remote access](#) path is separated from the operation network to keep data and workflow secure from end to end, and allows the PC/server to remotely perform system reboots and installation of software updates in case of emergency. Hence, there are zero concerns about data leakage, backdoors, or any form of cyber attack, which is something that a software solution simply cannot guarantee.



Software
Solution

Product Comparison

Talk to Our Experts

If you prefer to have ATEN contact you, please complete the form and a representative will be in touch with you shortly

Features

The CN9600 [DVI KVM](#) over IP Switch is a cost-efficient over-IP device, which allows [remote access](#) of digital video, audio and [virtual media](#) via remote control of a PC or workstation. The CN9600 enables over-IP capability by connecting compatible ATEN [DVI KVM](#) switch and/or LCD console, such as the [CS1768](#) (8-Port USB DVI/Audio KVM Switch) or the [CL3800](#) (DVI LCD Console).

[ENQUIRE A TEST NOW!](#)

The CN9600 expands on previous models by providing a more compact, slimmer [space-saving](#) design for utility optimization, and a FPGA graphics processor that offers better image and video quality to enhance user experience, while also meeting the RS-232 DTE/DCE standards for serial control.

For user-friendly operation, a mini USB port on the front panel is designed as a Laptop USB Console (LUC) port. Users just simply connect a laptop to the LUC port, and can access any computer connected to the switch for easy on-site management. That means no additional monitor, keyboard and mouse is strongly required locally for routine maintenance. Besides, the CN9600's [Virtual Media](#) function allows a user to perform diagnostic testing, file transfers, or apply OS/applications updates and patches from a remote console.

To ensure seamless connectivity, the CN9600 is equipped with dual LAN and dual power functionality to keep operation in the server room smooth and efficient. The CN9600 also supports microphone and speakers on the local and remote console.

Integrating all these advanced functionalities, the CN9600 provides an affordable and durable over-IP server management solution while assuring users with operational dependability and efficiency.

• **Hardware**

- Compact and slim design for space utility optimization
- Provides an FPGA graphics processor for better image quality
- Provides over-IP capability to [DVI KVM](#) switches that do not have built-in over-IP functionality*
- Local console provides USB keyboard and mouse support**
- A mini USB port on the front panel serves as a Laptop USB Console (LUC) port
- Two 10/100/1000 Mbps NICs for redundant LAN or two IP operation
- Dual power supply to ensure seamless connectivity
- Supports multiplatform server environments: Windows, Mac, Sun, Linux and VT100 based serial devices
- Virtual Media support***
- High video resolution – up to 1920 x 1200 @ 60Hz for both local and remote consoles
- Audio support – microphone and speakers are supported on the local and remote console

* Compatible KVM Switch: ATEN DVI Single Link KVM Switches

**Since there are a large number of keyboards/mouses with functions specifically designed for OS other than Windows, they may not be adapted and may have compatibility issue

*** Some of the CN9600's features may not be supported, depending on the functionality of the cascaded KVM switch. (For example, some switches do not support [virtual media](#))

• **Management**

- Complies to the RS-232 DTE/DCE standards for serial control
- Up to 64 user accounts – up to 32 users can simultaneously share control
Note: As more users connect to the device, the bandwidth allocated to each user decreases.

- Console access right management
 - End session feature – administrators can terminate running sessions
 - Event logging and Windows-based Log Server support
 - Event Logging – the CN9600 can record all events that take place on it and write them to a searchable database
 - Supports instant notification of critical system events via email, SNMP trap and Syslog
 - Firmware upgradable via [remote access](#)
 - Access the CN9600 via a built-in serial viewer, or via third-party software (such as PuTTY) for Telnet and SSH sessions
 - Out of Band support – access the CN9600 through its serial port using a dial-up connection
 - Port Share Mode allows multiple users to gain access to a server simultaneously
 - Local/Remote Share Mode conveniently grants shared or exclusive console privilege
 - Integration with ATEN [CC2000](#) Management Software
 - Integration with ATEN [CCVSR](#) Video Session Recording Software
 - Supports ATEN KVM over IP Console Station ([KA8270](#) / [KA8280](#) / [KA8278](#) / [KA8288](#))
 - DDNS – allows mapping of a dynamic IP address assigned by a DHCP server to a host name
 - Supports export/import of user account and configuration settings
 - Supports permission-controlled browser operation
 - Supports IPv6
-
- **Easy-to-Use Interface**
 - Browser-based and AP GUIs offer a unified multilanguage interface to minimize user training time and increase productivity
 - Multiplatform client support (Windows, Mac OS X, Linux, Sun)
 - Multibrowser support (IE, Mozilla, Firefox, Safari, Opera, Netscape)
 - Browser-based UI in pure Web technology allows administrators to perform administrative tasks without pre-installed Java software package requirements
 - Full-screen or sizable and scalable Virtual Remote Desktop
 - Magic Panel with configurable function for quick launch
-
- **Advanced Security**
 - External authentication support: RADIUS, LDAP, LDAPS and MS Active Directory
 - Supports TLS 1.2 data encryption and RSA 2048-bit certificates to secure users logging in from browsers
 - Flexible design allows users to choose any combination of encryption algorithms (e.g. 256-bit AES) or system-generated random selection for independent keyboard/mouse, video, and [virtual media](#) data encryption
 - Supports IP/MAC Filter
 - Supports password protection
 - Private CA
-
- **Virtual Media**
 - Virtual media enables file applications, OS patching, software installation and diagnostic testing
 - Works with USB-enabled servers at OS and BIOS level
 - Supports USB 1.1 and USB 2.0 DVD/CD drives, USB mass storage devices, PC hard drives, folders and ISO images
-
- **Virtual Remote Desktop**
 - Video quality and video tolerance can be adjusted to optimize data transfer speed; monochrome color depth, threshold and noise settings can be adjusted for compression of the data bandwidth in low bandwidth situations
 - Full-screen video display or scalable video display
 - Message Board for communication among remote users
 - On-screen keyboard with multilanguage support
 - Mouse DynaSync™ – automatically synchronizes the local and remote mouse movements
 - Supports Exit Macros
 - BIOS-level access

Specifications

Connectors	
Console Ports	2 x USB Type A Female (White) 1 x DVI-D Female (White) 1 x Mini Stereo Jack Female (Green) 1 x Mini Stereo Jack Female (Pink)
KVM Ports	1 x USB Type B Female (White) 1 x DVI-D Female (White) 1 x Mini Stereo Jack Female (Green) 1 x Mini Stereo Jack Female (Pink)
LAN Ports	2 x RJ-45 Female
Virtual Media	1 x USB Mini-B Female
Power	2 x DC Jack
Serial	2 x RJ-45 Female
Control	1x PS/2 Female
Switches	
Reset	1 x Semi-recessed pushbutton (Black)
Emulation	
Keyboard / Mouse	USB
LEDs	
Power	1 (Green)
Video	Local console - 1920 x 1200 @ 60 Hz Remote - 1920 x 1200
Power Consumption	DC5V:5.55W:30BTU/h Note: ● The measurement in Watts indicates the typical power consumption of the device with no external loading. ● The measurement in BTU/h indicates the power consumption of the device when it is fully loaded.
Environmental	
Operating Temperature	0 - 50°C (CN9600) 0 - 40°C (Power Adapter)
Storage Temperature	-20 - 60°C
Humidity	0 - 80% RH, Non-condensing
Physical Properties	
Housing	Metal
Weight	0.84 kg (1.85 lb)
Dimensions (L x W x H)	20.00 x 15.49 x 2.85 cm (7.87 x 6.1 x 1.12 in.)
Note	For some of rack mount products, please note that the standard physical dimensions of WxDxH are expressed using a LxWxH format.

Diagram

