

## CN9850

1-Local / Remote Shared Access Single Port 4K HDMI KVM over IP Switch





# Reinforcing Remote Work

Dual LAN / Power Sustain Uninterrupted Operations



CN9850 ▲

1-Local / Remote Shared Access Single Port 4K HDMI KVM over IP Switch

## Secure Your New Normal with a Direct Hack-proof Connection

The CN9850 provides over-IP capability for remote access to a dedicated PC/server via a direct BIOS-level, hack-proof network connection, and expands on previous models with increased visual excellence, up to 4K DCI resolution, by utilizing an FPGA graphics processor. It allows for secured remote access to audio, video, and [virtual media](#), facilitating instant file sharing and system updates over the network without the need for any extra software installation or configuration.

The CN9850 KVM over IP switch is ideal for global organizations and companies with several office locations by bridging local and remote workplaces with a seamless connection without any restriction or loss in productivity. It is a secure and practical solution to help keep businesses afloat during a downturn or global crises.



LAN/Power  
Redundancy



Superior Visual  
Quality



Audio Enabled



Virtual Media



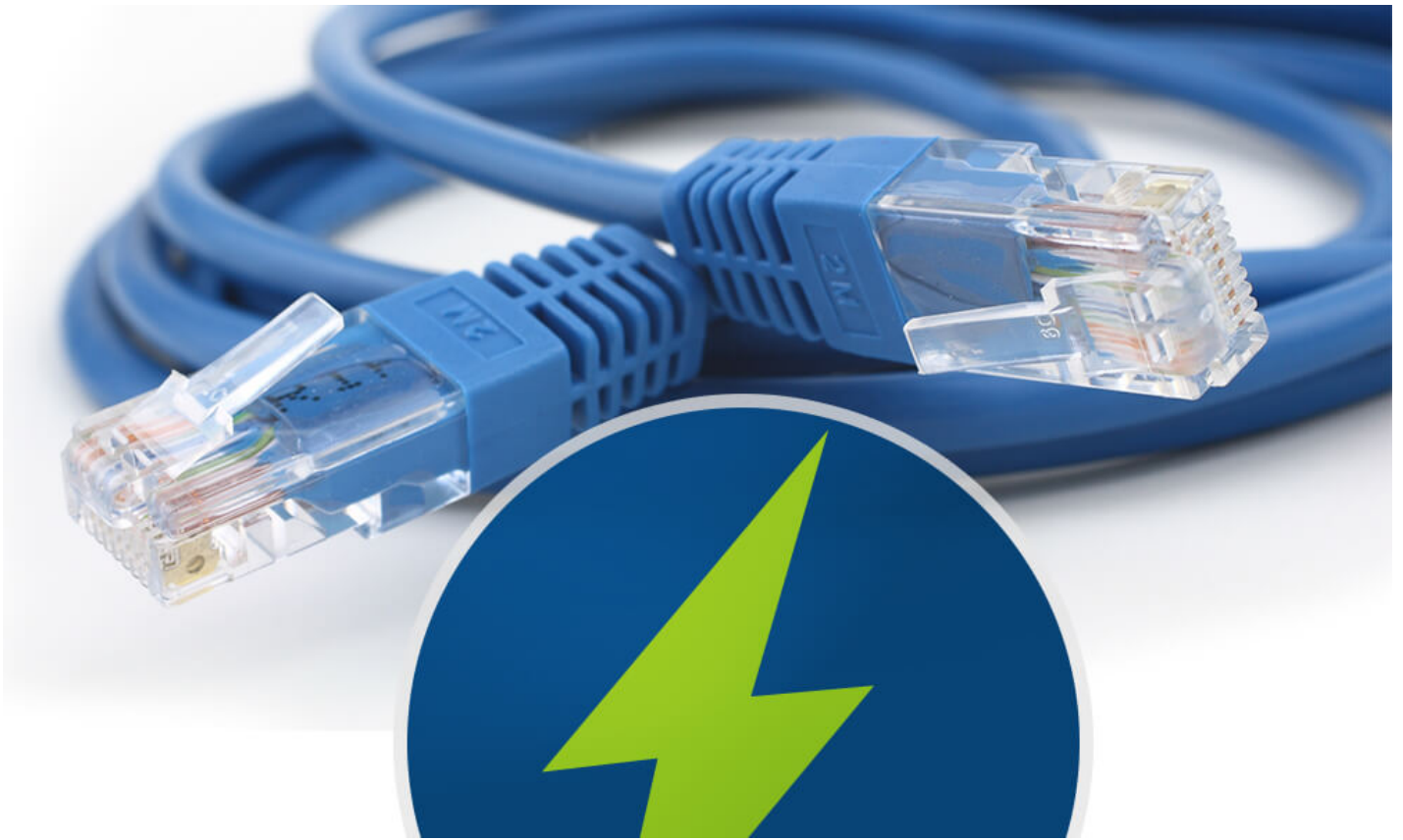
Virtual Reboot

**Security Guarded Remote Access, Wherever You Are**

The CN9850 provides a direct BIOS-level connection to the dedicated PC/server to allow for instant remote access from different locations without requiring any extra software installation or configuration.

**Dual LAN / Power Redundancy**

The CN9850 is equipped with dual LAN / power connectivity that strengthens system reliability by maintaining uninterrupted operations during any contingency. Power connectors are fastened with screw locks to ensure robust power failover, and power status can be identified easily via the LED indicators.



**Contact Us**

Get a quote for this product or get in touch with our sales experts

Get Quote

[Contact Sales](#)





External Storage Drive

#### Virtual Media Support for Prompt System Updates

The CN9850 enables authorized [virtual media](#) support to run file applications and software installations over the network, and this is especially useful for diagnosing and troubleshooting network and BIOS issues, as well as performing software updates and patches to keep your system up-to-date.

#### DI and Relay Connectivity for Contingency Approach

The CN9850 comes built in with a 5-pin control terminal for a DI input connection for system alerts (from a thermometer, humidity/door sensor), as well as a relay terminal for a virtual power-on feature that remotely reboots a hung or crashed PC/server to ensure constant system availability for mission-critical applications.



Thermometer



Humidity



Door Sensor

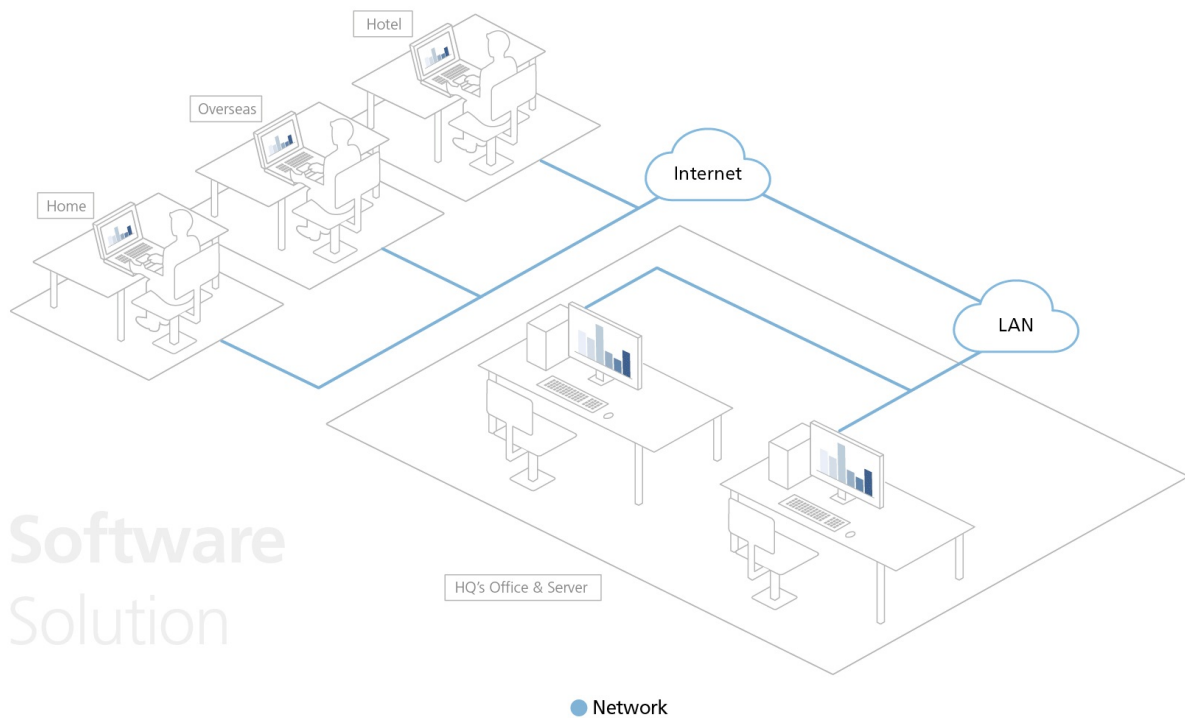


#### Applications

The CN9850 is ideally suited for use in control rooms and server rooms of diverse industries, as well as work-from-home scenarios.

**Control Room****Server Room****Government****Work from Home****Hack-proof Remote Access Solution in Action**

Unlike third-party solutions, such as RDP (Remote Desktop Protocol) and VNC (Virtual Network Computing), a KVM over IP switch does not require any additional driver/software and can operate independently of a functional operating system when the PC/server is in its BIOS-level state. KVM access to the PC/server is built upon a direct connection with the keyboard, video and mouse, while the communication between the PC/server and the remote workstation is securely strengthened with encryption. This hack-proof hardware-based remote access path is separated from the operation network to keep data and workflow secure from end to end, and allows the PC/server to remotely perform system reboots and installation of software updates in case of emergency. Hence, there are zero concerns about data leakage, backdoors, or any form of cyber attack, which is something that a software solution simply cannot guarantee.





Software  
Solution

**Product Comparison**

**Talk to Our Experts**

If you prefer to have ATEN contact you, please complete the form and a representative will be in touch with you shortly



First Name *	
Last Name *	
- Country *	
Company *	
Email *	
Phone Number	
- Customer Type *	
Job Title *	



## Features

The CN9850 KVM over IP Switch allows for remote access to video, audio, and [virtual media](#) of a PC or workstation, and features HDMI high-definition video with resolutions of up to 4K DCI (4096 x 2160) @ 30 Hz at both the local and remote consoles. Built with an advanced FPGA graphics processor, the CN9850 offers better image and video quality to enhance the user experience, while also meeting the RS-232 standards for serial control.

For user-friendly operation, a mini USB port on the front panel is designed as a Laptop USB Console (LUC) port for connection to a laptop, which allows the user to access the PC / server for easy routine maintenance without requiring an additional monitor, keyboard, and mouse.

To seamless stable connectivity, the CN9850 is equipped with dual LAN and dual power functionality to keep operations in the server room smooth and efficient. Its power status detection function automatically sends out event notifications when the devices are offline (e.g. power failure) for device status monitoring. Moreover, the CN9850 features a 5-pin Relay / DI (digital input) terminal block allowing for remote reboot of the local server, and receiving digital input from a connected input/alarm device for notification of critical events.

For ease of [remote management](#), the CN9850 WebClient Viewer supports remote desktop access without additional software applications. The HDMI 4K KVM over IP Switch provides a webbased GUI for remote access and management. In addition, a unified multi-language interface can minimize user training time and increase productivity.

The CN9850 is ideal for [data centers](#), server rooms, and control rooms for remote access management in industries with requirements for high-quality images and multitasking, such as global organizations and companies with several office locations where it can function as a bridge between local and remote workplaces.

- Hardware

- Supports HDMI resolution up to 4K DCI (4096 x 2160) @ 30 Hz <sup>1</sup>
- A mini USB port in the front panel can serve as a [Virtual Media](#) USB port or a Laptop USB Console (LUC) port
- Compact and slim design for space utility optimization
- Supports 5-pin Relay / DI Terminal for environment monitoring and remotely reboot control
- Provides an FPGA graphics processor for better image quality
- Two 10 / 100 / 1000 Mbps NICs for redundant LAN or two IP operation
- Dual power supply to ensure seamless connectivity
- Provides over IP capability to HDMI KVM switches without over IP functionality <sup>2</sup>
- Allows access to the CN9850 via a built-in serial viewer, or via third-party software (such as PuTTY) for Telnet and SSH sessions

Note:

1. Audio is not supported by CN9850 HDMI and can only be transmitted through its 3.5 mm audio ports.

1. Audio is not supported by CN9850 HDMI and can only be transmitted through its 3.5 mm audio ports.
2. When the CN9850 is used with [CS1798](#) or [CS17916](#), the mouse on the CN9850 should be changed to manual sync mode to avoid compatibility issue.

- Management

- Complies to the RS-232 standards for serial control
  - Up to 64 user accounts – up to 32 users can simultaneously share control
- Note: As more users connect to the device, the bandwidth allocated to each user decreases.
- Console access right management
  - End session feature – administrators can terminate running sessions
  - Event logging and Windows-based Log Server support
  - Event logging – the CN9850 can record all events that take place on it and write them to a searchable database
  - Supports instant notification of critical system events via email, SNMP trap, and Syslog
  - Firmware upgradable via remote access

- Out of Band support – access the CN9850 through its serial port using a dial-up connection
- Local / Remote Share Mode conveniently grants shared or exclusive console privilege
- Port Share Mode allows multiple users to gain access to a server simultaneously
- DDNS – allows mapping of a dynamic IP address assigned by a DHCP server to a host name
- Supports export / import of user account and configuration settings
- Supports permission-controlled browser operation
- Supports IPv6
- Integration with ATEN [CC2000](#) Management Software
- Integration with ATEN [CCVSR](#) Video Session Recording Software

#### • Easy-to-Use Interface

- Browser-based and AP GUIs offer a unified multi-language interface to minimize user training time and increase productivity
- Multiplatform client support (Windows, Mac, Linux, Sun)
- Multibrowser support (IE, Firefox, Safari, Opera, Chrome)
- Browser-based UI in pure web technology allows administrators to perform administrative tasks without pre-installed Java software package requirements
- Full-screen or sizable and scalable Virtual Remote Desktop
- Magic Panel with configurable function for quick launch

#### • Advanced Security

- External authentication support: RADIUS, LDAP, LDAPS, and MS Active Directory
- Supports TLS 1.2 data encryption and RSA 2048-bit certificates to secure users logging in from browsers
- Flexible encryption design allows users to choose any combination of 56-bit DES, 168-bit 3DES, 256-bit AES, 128-bit RC4, or Random for independent keyboard / mouse, video, and [virtual media](#) data encryption
- Supports IP / MAC Filter
- Supports password protection
- Private CA

#### • Virtual Media

- Virtual media enables file applications, OS patching, software installation, and diagnostic testing
- Works with USB-enabled servers at OS and BIOS level
- Supports USB 2.0 DVD / CD drives, USB mass storage devices, PC hard drives, folders, and ISO images

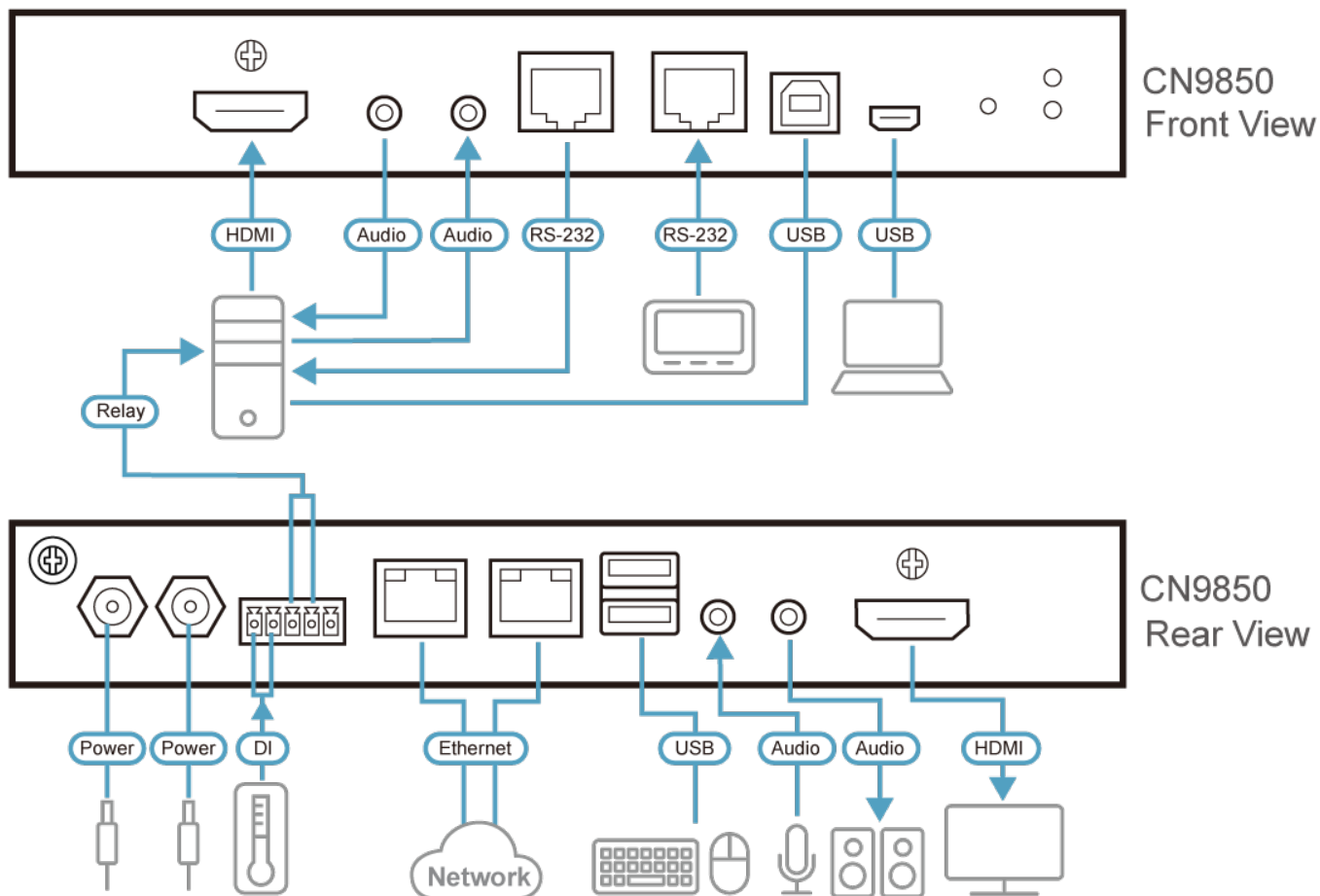
#### • Virtual Remote Desktop

- Video quality and video tolerance can be adjusted to optimize data transfer speed; monochrome color depth, threshold, and noise settings can be adjusted for compression of the data bandwidth in low-bandwidth situations
- Full-screen video display or scalable video display
- Message Board for communication among remote users
- On-screen keyboard with multi-language support
- Mouse DynaSync™ – automatically synchronizes the local and remote mouse movements
- Supports Exit Macros
- BIOS-level access

## Specifications

Connectors	
Console Ports	2 x USB Type A Female (White) 1 x HDMI Female (Black) 1 x Mini Stereo Jack Female (Green) 1 x Mini Stereo Jack Female (Pink)
KVM Ports	1 x USB Type B Female (White) 1 x HDMI Female (Black) 1 x Mini Stereo Jack Female (Green) 1 x Mini Stereo Jack Female (Pink)
LAN Ports	2 x RJ-45 Female
Power	2 x DC Jack
Serial	2 x RJ-45 Female
Control	1 x PS/2 Female
Laptop USB Console (LUC) Port	1 x USB Mini-B Female
Switches	
Reset	1 x Semi-recessed pushbutton (Black)
Emulation	
Keyboard / Mouse	USB
LEDs	
Power	2 (Green)
Video	Local console - 4096 x 2160 @ 30 Hz Remote console - 4096 x 2160
Power Consumption	DC5V:10.07W:48BTU/h  Note: ● The measurement in Watts indicates the typical power consumption of the device with no external loading. ● The measurement in BTU/h indicates the power consumption of the device when it is fully loaded.
Environmental	
Operating Temperature	0 - 50°C (CN9850) 0 - 40°C (Power Adapter)
Storage Temperature	-20 - 60°C
Humidity	0 - 80% RH, Non-condensing
Physical Properties	
Housing	Metal
Weight	0.84 kg ( 1.85 lb )
Dimensions (L x W x H)	20.00 x 15.05 x 2.84 cm (7.87 x 5.93 x 1.12 in.)
Note	For some of rack mount products, please note that the standard physical dimensions of WxDxH are expressed using a LxWxH format.

Diagram



**ATEN International Co., Ltd.**

3F., No.125, Sec. 2, Datong Rd., Sijhih District., New Taipei City 221, Taiwan  
 Phone: 886-2-8692-6789 Fax: 886-2-8692-6767  
 www.aten.com E-mail: marketing@aten.com



© Copyright 2015 ATEN® International Co., Ltd.  
 ATEN and the ATEN logo are trademarks of ATEN International Co., Ltd.  
 All rights reserved. All other trademarks are the property of their respective owners.