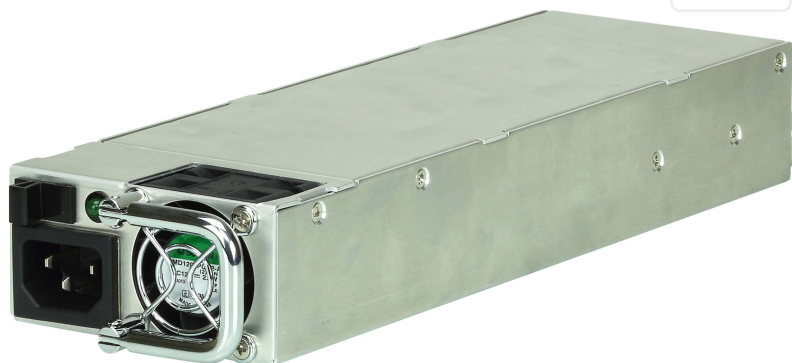


## VM-PWR400

VM1600 Power Module



The [VM1600](#) can be equipped with dual power modules to ensure that the system is always working. The power modules are hot-swappable and can be easily replaced without shutting down the system. The [VM1600](#) has two power slots that can connect to two different power supplies. If the primary power fails, the secondary power supply will automatically take over. ATEN ensures that your investment is well protected while delivering outstanding performance.

### Specifications

Video Matrix Power Module	VM-PWR400
Input voltage	100 - 240Vac
Power Consumption	Max.Load 378W  Note: <ul style="list-style-type: none"> <li>● The measurement in Watts indicates the typical power consumption of the device with no external loading.</li> <li>● The measurement in BTU/h indicates the power consumption of the device when it is fully loaded.</li> </ul>
Operating Temperature	0 - 40°C

### ATEN International Co., Ltd.

3F., No.125, Sec. 2, Datong Rd., Sijhih District., New Taipei City 221, Taiwan  
 Phone: 886-2-8692-6789 Fax: 886-2-8692-6767  
[www.aten.com](http://www.aten.com) E-mail: [marketing@aten.com](mailto:marketing@aten.com)



© Copyright 2015 ATEN® International Co., Ltd.  
 ATEN and the ATEN logo are trademarks of ATEN International Co., Ltd.  
 All rights reserved. All other trademarks are the property of their respective owners.