

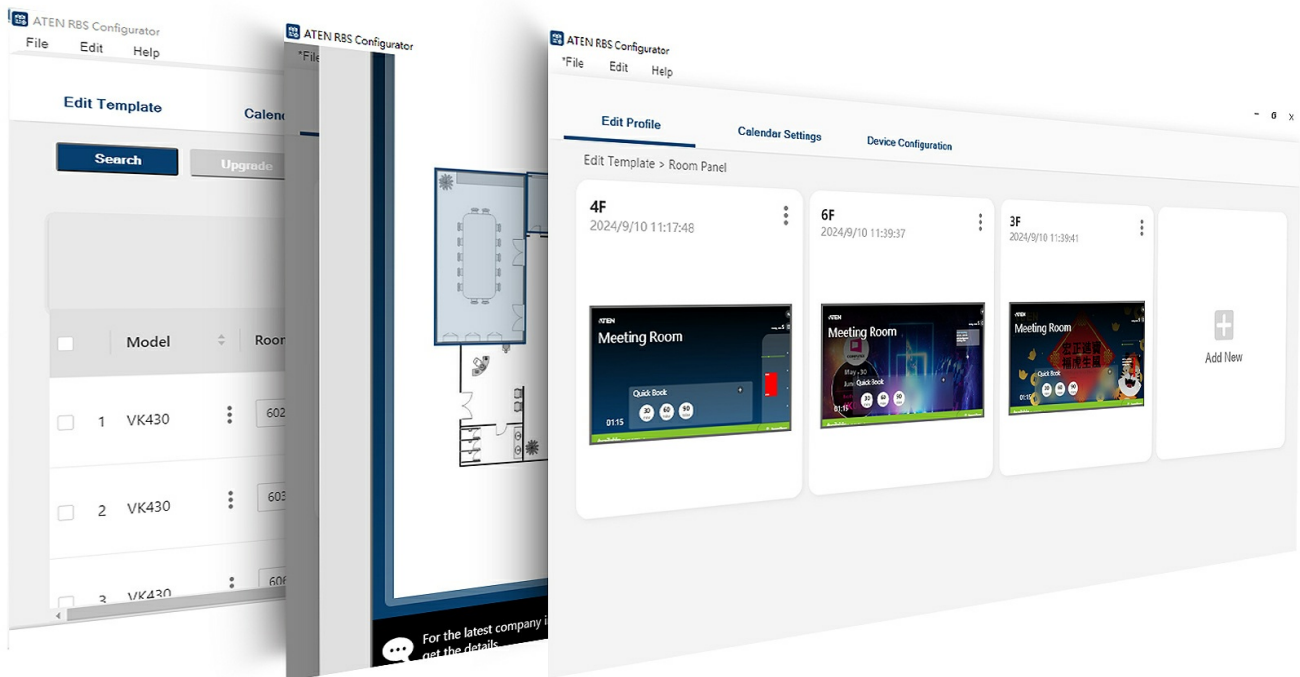
VK430

Room Booking System - 10.1" RBS Panel



ATEN VK430 RBS Panel is a 10.1" touch-screen panel used to manage meeting or teaching spaces, from conference rooms, lecture halls, auditoriums to boardrooms and is configurable via ATEN [RBS Configurator](#) – centralized management software of RBS Panels – while integrating with [ATEN Unizon™](#) Timetable and other mainstream calendar servers such as Microsoft 365 Calendar, Google Workspace Calendar Microsoft Exchange Server, and DingTalk to provide quick, yet smooth booking, reservation extension / cancellation, and availability allocation for all rooms in the system.

Works with The Whole RBS Family



Through ATEN [RBS Configurator](#) administrators can customize reservation settings and upgrade / manage each VK430 connected from afar.

Users can supplement Room Booking System with an ATEN RBS infoPlayer [VR610](#) to centralize room usage and availability information on a single display.

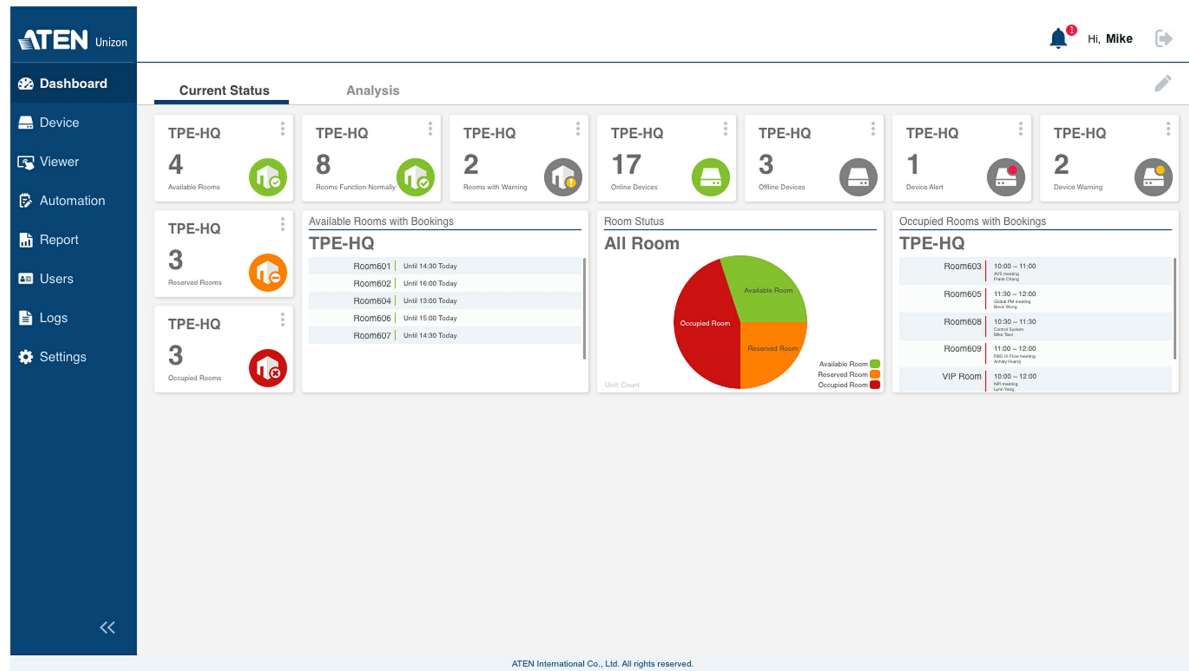




With RBS Access Inspector [VK401](#), the system enables exclusive card-access functionality to allow authorized users to efficiently book and check in meeting rooms, thereby contributing to the streamlined automation of meeting room operations.

Seamless Integration with ATEN Unizon

Keeps room booking data in sync for efficient central management like prompt maintenance or facilitation of in-room device automation solutions.



Mainstream Calendar Servers Supported

Supports integration with [ATEN Unizon](#) Timetable and mainstream calendar servers such as Microsoft 365 Calendar, Google Workspace Calendar, Microsoft Exchange Server, and DingTalk.



Built-In LED Light Bars

Illuminates in user-defined colors to allow any individual to know the usage status of the rooms (available / reserved / occupied) at a glance.

Easy, Flexible Installation

Supports 75*75 mm [VESA](#) mounting and comes with a standard wall mount kit as well as a 3M VHB Tape for easy installation onto any hard or glass surface.

Features

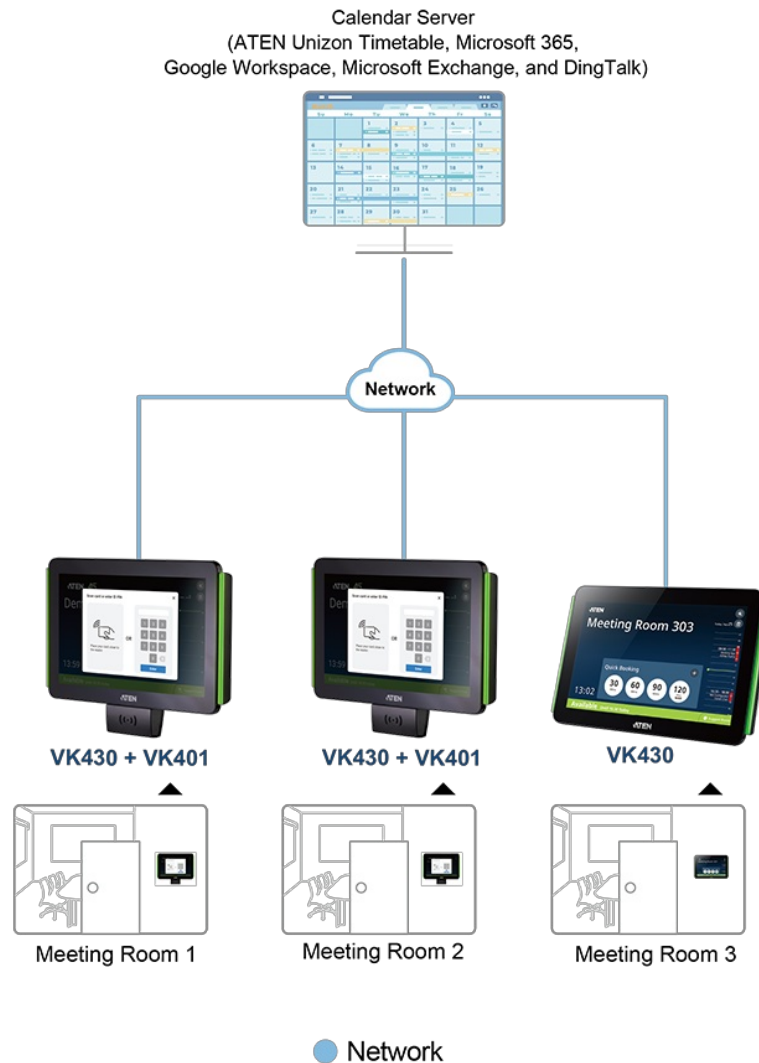
- 10.1" capacitive touch-screen panel
- Supports integration with [ATEN Unizon](#) Timetable and mainstream calendar servers such as Microsoft 365 Calendar, Google Workspace Calendar, Microsoft Exchange Server, and DingTalk
- Multiple templates serve for versatile application purposes from academies to business hospitality
- Supports layout in Portrait and Landscape modes
- Supports [RBS Configurator](#) for batch upgrade, customizable booking options, and calendar settings
- Works with [VR610](#) RBS infoPlayer to give users a glimpse of room status and floor plan through the [VR610](#)-connected displays
- In conjunction with the [VK401](#), the system enables exclusive card-access functionality; only authorized users can scan cards to book and check in meeting rooms and facilitate conference room automation
- Supports central management through [ATEN Unizon](#) to allow administrators to monitor managed devices in real time, generate room usage analyses, and update app in batch
- Supports TCP protocol for third-party system integration
- Supports Power over Ethernet (PoE), which allows it to receive power and communication over a single Ethernet cable
- LED light bars illuminating user-defined colors to indicate the room's availability at a glance
- Preinstalled with a wall mount kit and provided with 3M VHB™ Tape for easy mounting onto a hard or glass wall
- 75*75 mm [VESA](#)-compliant for flexible mounting across various installation scenarios

Specifications

Processor	Quad-core
Memory	
SDRAM	2GB
Flash	16GB
Panel Spec	
Display Type	TFT-LCD
Size	10.1"
Touch Screen	Capacitive
Resolution	1280 x 800
Aspect Ratio	16 : 10
Color Depth	8 bit
Contrast Ratio	800 : 1
Backlight	LED
Viewing Angle	± 85° (H), ± 85° (V)
Luminance	500 cd/m ²
Interfaces	
Ethernet	1 x RJ-45 Female, 10 / 100 / 1000 BaseT
USB	1 x USB Type A
Power Inputs	
Power over Ethernet (PoE)	802.3 at PoE+
Power Consumption	DC12V:17.8W:60.70BTU/h POE:20W:68.24BTU/h Note: ● The measurement in Watts indicates the typical power consumption of the device with no external loading. ● The measurement in BTU/h indicates the power consumption of the device when it is fully loaded.
Environmental	
Operating Temperature	0 – 40°C
Storage Temperature	-10 – 55°C
Humidity	10 - 80% RH, Non-Condensing
Physical Properties	
Housing	Plastic
Weight	0.68 kg (1.5 lb)
Dimensions (L x W x H)	26.30 x 17.78 x 2.45 cm (10.35 x 7 x 0.96 in.)
Note	No license is required for running ATEN Room Booking System. However, additional costs may be charged for the resource accounts by the calendar service provider.
Note	For some of rack mount products, please note that the standard physical dimensions of WxDxH are expressed using a LxWxH format.

Diagram

► **Basic Application**



ATEN International Co., Ltd.

3F., No.125, Sec. 2, Datong Rd., Sijhih District., New Taipei City 221, Taiwan
Phone: 886-2-8692-6789 Fax: 886-2-8692-6767
www.aten.com E-mail: marketing@aten.com



© Copyright 2015 ATEN® International Co., Ltd.
ATEN and the ATEN logo are trademarks of ATEN International Co., Ltd.
All rights reserved. All other trademarks are the property of their
respective owners.