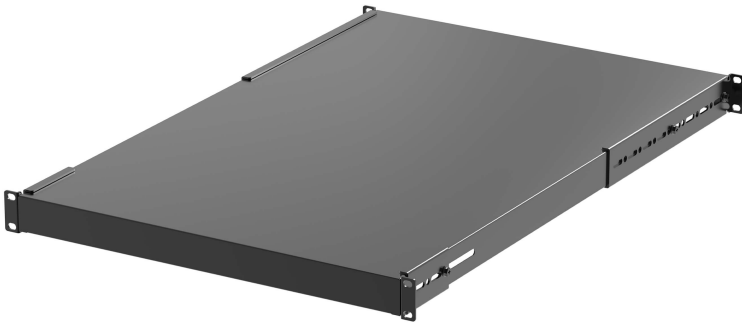


AP-7019S

Adjustable Rack Shelf (Non-vented)



ATEN offers a variety of flexible rack accessories to meet the needs of IT personnel for managing racks and installing equipment. All accessories are functional, ensuring the safe operation of equipment and personnel, and can be applied flexibly to meet different rack configuration needs.

The ATEN Adjustable Rack Shelf complies with the latest EIA / ECA-310-E standards and is designed to support medium to large-sized equipment such as servers and network switches. With a maximum load capacity of up to 90 kg, it provides strong and reliable support.

The shelf features a 1U height design and a shelf depth of 700 mm, offering ample surface area. The front and rear mounting brackets support an adjustable installation depth ranging from 370 mm to 920 mm, allowing flexible installation based on the rack structure. It is compatible with ATEN and other 19-inch rack brands and can be mounted at any height on adjustable vertical rails to accommodate a wide range of deployment needs.

Features

- Complies with the latest EIA / ECA-310-E standards
- 1U height design; adjustable mounting depth from 370 mm to 920 mm
- Supports medium to large equipment such as servers and network switches, with a maximum load capacity of 90kg
- Compatible with 19-inch racks from ATEN or other brands with a depth of 900 – 1200 mm
- Can be flexibly installed at any height on adjustable rack rails

Specifications

Part Number	RA1300B-AT (Black) RA1300W-AT (White)
Function	AP-7019S
Physical Properties	
U Spaces	1U
Overall Height	44 mm
Overall Width	482 mm
Overall Depth	700 mm
Thickness	2.0 mm
Color	Black



Simply Better Connections

ATEN International Co., Ltd.

3F., No.125, Sec. 2, Datong Rd., Sijhih District., New Taipei City 221, Taiwan
Phone: 886-2-8692-6789 Fax: 886-2-8692-6767
www.aten.com E-mail: marketing@aten.com



© Copyright 2015 ATEN® International Co., Ltd.
ATEN and the ATEN logo are trademarks of ATEN International Co., Ltd.
All rights reserved. All other trademarks are the property of their
respective owners.