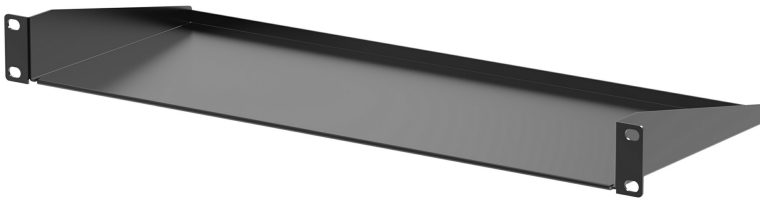


RA3200

1U Solid Rack Mount Shelf (Depth : 178 mm)



ATEN offers a wide variety of flexible rack accessories designed to support IT personnel in managing racks and installing equipment. All accessories are engineered with functionality in mind, ensuring safe equipment operation and user safety, while allowing flexible use in diverse rack configurations.

The ATEN 1U Solid Shelf complies with the latest EIA / ECA-310-E standards and is ideal for placing small devices or accessories within the rack. It features a 1U height design and supports a maximum load capacity of 15kg. Compatible with ATEN and other 19-inch standard racks, the shelf measures 44x482x178 mm (HxWxD) and can be installed at any height on adjustable mounting rails.

Features

- Complies with EIA / ECA-310-E standards
- 1U height design with maximum load capacity of 15kg
- Dimensions: 44mm (H) x 482mm (W) x 178mm (D)
- Ideal for placing small devices or accessories inside the rack
- Compatible with ATEN or other 19-inch standard racks

Specifications

Physical Properties	
U Spaces	1U
Overall Height	44 mm
Overall Width	482 mm
Overall Depth	178 mm
Thickness	1.6 mm
Color	Black (RA3200B)
Load Capacity	15 kg



Simply Better Connections

ATEN International Co., Ltd.

3F., No.125, Sec. 2, Datong Rd., Sijhih District., New Taipei City 221, Taiwan
Phone: 886-2-8692-6789 Fax: 886-2-8692-6767
www.aten.com E-mail: marketing@aten.com



© Copyright 2015 ATEN® International Co., Ltd.
ATEN and the ATEN logo are trademarks of ATEN International Co., Ltd.
All rights reserved. All other trademarks are the property of their
respective owners.