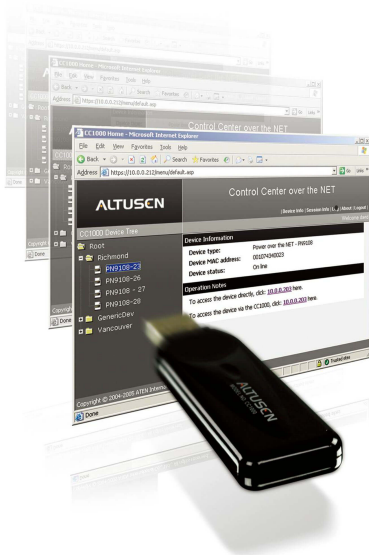


CC1000

Control Center Over the NET™



The CC1000 Control Center Over the NET™ provides centralized access, administration, and management of your data centers - local and worldwide at anytime, from anywhere. This software based solution consolidates the management of your ALTUSEN "Over the NET™" devices, providing a convenient, flexible way to meet your IT infrastructure needs.

- * **Web Browser - Single IP Access**
- * **Tight Security Regulates User Access and Control**
- * **Scalability Expands to Fit Your Individual Needs**
- * **Monitoring, Diagnosis, and Resolution of Network Problems Made Easy**

□ **Dual Access - Direct or via the CC1000**

□ **Manage your servers anytime, anywhere**

□ **Adding groups, and devices, couldn't be simpler**

특장점

- **Secure Centralized Management**
 - Complete control of your enterprise - consolidates the management of all ALTUSEN / ATEN IT devices
 - Single IP address to securely access every device on the installation
 - All devices are integrated into a single tree view for centralized access, administration, and management of a worldwide network from anywhere at anytime
 - Web browser access over Internet/Intranet provides secure remote connections to all installed devices
 - Windows and Java versions for multiplatform support
- **Highlights**
 - Ideal for enterprises with one or more data centers, or a number of remote offices
 - Easy to use - intuitive browser-based GUI for simplified access to IT equipment in global data centers and remote offices
 - Scalability - Multi-user access to hundreds of ALTUSEN / ATEN IT appliances and more than ten thousand servers and serially controlled devices
 - A single login provides secure, centralized management of multiple data centers, branch offices and remote locations
 - Provides centralized management, Role-Based Access and Control(RBAC), and Reporting Capabilities
- **Powerful Security**
 - Powerful security features that enable integration with Active Directory external authentication tools
 - Robust security policies for individual user authorization to the port level
 - 128-bit SSL encryption of all data on the network
 - Flexible session time-outs
 - "Strong" user name and password authentication
- **Network Interfaces**
 - TCP/IP
 - HTTP / HTTPS
 - SSL
 - DNS
 - LDAP / LDAPS
- **Software Features**
 - All features - including access, configuration and administration accessible
 - Powerful portal-like interface provides customized permission-based groupings and device views
 - ALTUSEN / ATEN IT appliance auto-discovery with device-availability status, and alarms
 - Java client for multiplatform access
- **Access and Control from Anywhere at Anytime**
 - An array of flexible logging and reporting options with audit trails for diagnostics and troubleshooting
 - View and manage active user sessions and active ports in real time
- Multiplatform support: Windows 2000 Server/2003 Server/XP/ [Vista](#), RHEL AS 4.0 and Fedora Core 4.
- For more information about KVMs which can connect to CC1000, see [Compatible KVM Table](#)

에이텐 코리아 ATEN KOREA

서울시 금천구 디지털로9길 32(가산동) 갑을그레이트밸리 B동 303호

Tel: 02-467-6789 Fax: 02-467-9876

www.aten.com/kr/ko E-mail: marketing@aten.co.kr



© Copyright 2025 ATEN® International Co. Ltd.
ATEN and the ATEN logo are registered trademarks of ATEN International Co., Ltd.
All rights reserved. All other trademarks are the property of their respective owners.