

## KH1516i

Cat 5 High-Density KVM Over the NET™



The KH1516i KVM Switch is a control unit that allows access to multiple computers from a single KVM (Keyboard, Video, Mouse) console. It uses TCP/IP for its communications protocol; it can be accessed from any computer on the Net - whether that computer is located down the hall, down the street, or half-way around the world.

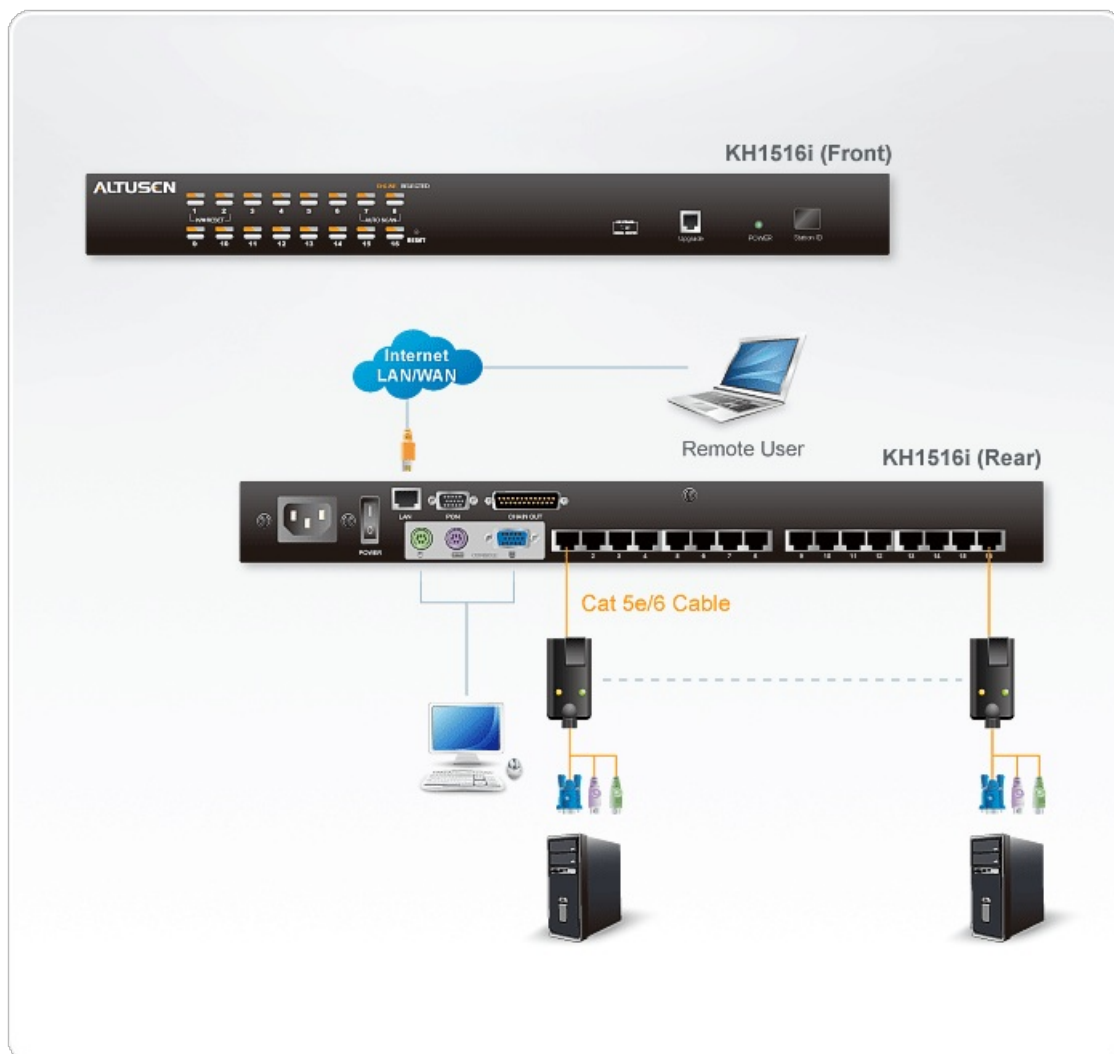
### Compatible KVM Adapter Cables:

- [KA9520](#) PS/2 KVM Adapter Cable
- [KA9570](#) USB KVM Adapter Cable
- [KA9130](#) Sun Legacy KVM Adapter Cable
- [KA9170](#) USB KVM Adapter Cable (PC/Mac/Sun)
- [KA9140](#) Serial KVM Adapter Module

### Options

- 16-port remote access KVM switch - monitor and control up to 16 computers from a single KVM (Keyboard, Video, Mouse) console.
- Remotely access computers via LAN, WAN, or the Internet; control your installation when and where you want.
- Extends the distance between computers and switch - up to 30m for resolutions of 1600 x 1200 @ 60Hz; up to 40m for resolutions of 1280 x 1024 @ 75Hz.
- Internet browser access; Windows client and Java client provided; Java client works with most operating systems.
- No software required - convenient computer selection via port selection switches, hotkeys and intuitive On Screen Display (OSD) menus.
- Supports all major server platforms and VT100 based serial devices.
- Supports multiplatform server environments including PS/2, USB, Sun, and Serial.
- RJ-45 connectors allow a full 16 port implementation - Cat 5e/6 cable reduces cable bulk.
- Dedicated chain ports - daisy chain up to 15 additional units - control up to 256 computers from a single console.
- Extends the distance between computers and switch - up to 40m.
- Up to 64 user accounts - up to 32 concurrent logins.
- Panel Array Mode - view all 16-ports at the same time.
- Message board feature allows logged in users to communicate with each other and allows a user to take exclusive control of the KVM functions.
- Windows-based Log Server.
- Remote power control for attached Power Over the NET™ devices.
- Advanced security features include password protection and advanced encryption technologies - 1024-bit RSA, 256-bit AES, 56-bit DES, and 128-bit SSL.
- RADIUS server support.
- Firmware upgradeable.
- Network Interfaces: TCP/IP, HTTP, HTTPS, UDP, RADIUS, DHCP, SSL, ARP, DNS, 10Base-T/100Base-TX, auto sense, Ping.
- High video resolution: up to 1600 x 1200 @ 60Hz
- Multiplatform support: Windows 2000/XP/Vista, Linux, Mac, Unix, SUN and FreeBSD.

## Diagram



### ATEN International Co., Ltd.

3F, No.125, Sec. 2, Datong Rd., Sijhih District., New Taipei City 221, Taiwan  
 Phone: 886-2-8692-6789 Fax: 886-2-8692-6767  
 www.aten.com E-mail: marketing@aten.com



© Copyright 2015 ATEN® International Co., Ltd.  
 ATEN and the ATEN logo are trademarks of ATEN International Co., Ltd.  
 All rights reserved. All other trademarks are the property of their  
 respective owners.