

## VS1508

8-Port VGA/Audio/RS-232 Cat 5 Splitter



The VS1508 Cat 5 Audio/Video Splitter is a splitter designed to connect one source to 8 displays over a long distance. Incorporating suggested compatible receivers \*, the VS1508 A/V Over Cat 5 Splitter can be a complete solution ideal for any professional A/V installation that requires multimedia content to be delivered to multiple destinations located up to 500 m away from the source.

\* Suggested Compatible Receiver Units:

[VB552](#) VGA Over Cat 5 Repeater + Audio

[VE200R](#) Audio/Video Receiver

Cascadable to three levels, the VS1508 can support thousands of displays when combined in an installation with ATEN repeaters or extenders. Incorporating RS-232 connectivity so serial devices such as touchscreens can be included in the installation.

The solution is perfect for a wide range of applications:

- In-store or tradeshow digital signage
- Broadcasting information to public locations
- Sporting events
- Theater and lecture overview rooms
- Classroom and company training facilities

### Features

- One video input to 8 video outputs
- Cascadable to three levels - provides up to thousands of video signals when combined in an installation with ATEN receiving devices\*
- Audio and serial enabled
- Uses Cat 5e (or higher) cable to extend displays up to 150 m, 450 m when combined with aten receiving devices
- High quality video - supports 1920 x 1200 @ 60Hz
- Group screens off/on function
- Provide a RS-232 channel for selection\*\*

\*Receiving Devices

a. ATEN [VB552](#) (VGA Over Cat 5 Repeater)

b. ATEN [VE200R](#) (Audio/Video Extender)

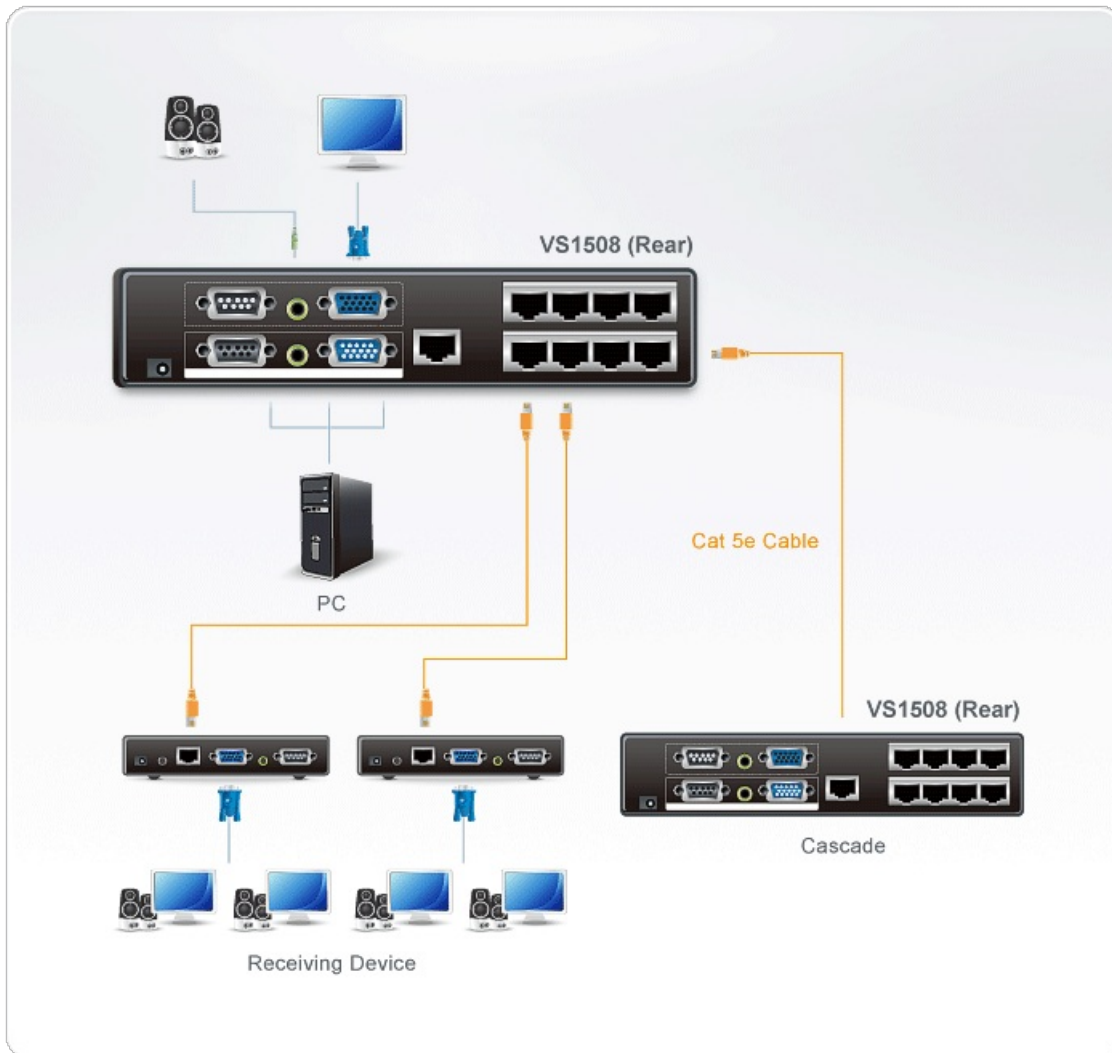
\*\* Only one RS-232 channel can be selected at a time

### Specifications

Video Input	
Interfaces	1 x HDB-15 Male (Blue)
Impedance	75 $\Omega$

Max. Distance	1.8 m
Video Output	
Interfaces	1 x HDB-15 Female (Blue) - Local Output 8 x RJ-45 Female
Impedance	75 $\Omega$
Video	
Max. Bandwidth	300 MHz
Max. Resolutions / Distance	Up to 1920 x 1200@60Hz@30m; 1280 x 1024@60Hz@150m
Audio	
Input	1 x Mini Stereo Jack Female (Green)
Output	1 x Mini Stereo Jack Female (Green)
Control	
RS-232	Connector: 1 x DB-9 Female (Black); 1 x DB-9 Male (Black)
Connectors	
Power	1 x DC Jack (Black)
Power Consumption	DC5.3V:7.93W:37BTU/h  Note: <ul style="list-style-type: none"> <li>● The measurement in Watts indicates the typical power consumption of the device with no external loading.</li> <li>● The measurement in BTU/h indicates the power consumption of the device when it is fully loaded.</li> </ul>
Environmental	
Operating Temperature	0-50°C
Storage Temperature	-20 - 60°C
Humidity	0 - 80% RH, Non-Condensing
Physical Properties	
Housing	Metal
Weight	0.76 kg ( 1.67 lb )
Dimensions (L x W x H)	21.00 x 8.80 x 5.55 cm (8.27 x 3.46 x 2.19 in.)
Carton Lot	5 pcs
Note	For some of rack mount products, please note that the standard physical dimensions of WxDxH are expressed using a LxWxH format.

## Diagram



### **ATEN International Co., Ltd.**

3F., No.125, Sec. 2, Datong Rd., Sijhih District., New Taipei City 221, Taiwan  
 Phone: 886-2-8692-6789 Fax: 886-2-8692-6767  
 www.aten.com E-mail: marketing@aten.com



© Copyright 2015 ATEN® International Co., Ltd.  
 ATEN and the ATEN logo are trademarks of ATEN International Co., Ltd.  
 All rights reserved. All other trademarks are the property of their  
 respective owners.