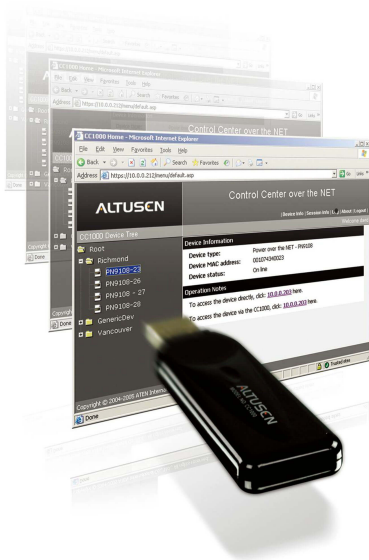


---

## CC1000

Control Center Over the NET™



The CC1000 Control Center Over the NET™ provides centralized access, administration, and management of your data centers - local and worldwide at anytime, from anywhere. This software based solution consolidates the management of your ALTUSEN "Over the NET™" devices, providing a convenient, flexible way to meet your IT infrastructure needs.

- \* **Web Browser - Single IP Access**
- \* **Tight Security Regulates User Access and Control**
- \* **Scalability Expands to Fit Your Individual Needs**
- \* **Monitoring, Diagnosis, and Resolution of Network Problems Made Easy**

□ **Dual Access - Direct or via the CC1000**

□ **Manage your servers anytime, anywhere**

□ **Adding groups, and devices, couldn't be simpler**

---

## Egenskaper

- **Secure Centralized Management**
    - Complete control of your enterprise - consolidates the management of all ALTUSEN / ATEN IT devices
    - Single IP address to securely access every device on the installation
    - All devices are integrated into a single tree view for centralized access, administration, and management of a worldwide network from anywhere at anytime
    - Web browser access over Internet/Intranet provides secure remote connections to all installed devices
    - Windows and Java versions for multiplatform support
  - **Highlights**
    - Ideal for enterprises with one or more data centers, or a number of remote offices
    - Easy to use - intuitive browser-based GUI for simplified access to IT equipment in global data centers and remote offices
    - Scalability - Multi-user access to hundreds of ALTUSEN / ATEN IT appliances and more than ten thousand servers and serially controlled devices
    - A single login provides secure, centralized management of multiple data centers, branch offices and remote locations
    - Provides centralized management, Role-Based Access and Control(RBAC), and Reporting Capabilities
  - **Powerful Security**
    - Powerful security features that enable integration with Active Directory external authentication tools
    - Robust security policies for individual user authorization to the port level
    - 128-bit SSL encryption of all data on the network
    - Flexible session time-outs
    - "Strong" user name and password authentication
  - **Network Interfaces**
    - TCP/IP
    - HTTP / HTTPS
    - SSL
    - DNS
    - LDAP / LDAPS
  - **Software Features**
    - All features - including access, configuration and administration accessible
    - Powerful portal-like interface provides customized permission-based groupings and device views
    - ALTUSEN / ATEN IT appliance auto-discovery with device-availability status, and alarms
    - Java client for multiplatform access
  - **Access and Control from Anywhere at Anytime**
    - An array of flexible logging and reporting options with audit trails for diagnostics and troubleshooting
    - View and manage active user sessions and active ports in real time
  - Multiplatform support: Windows 2000 Server/2003 Server/XP/ [Vista](#), RHEL AS 4.0 and Fedora Core 4.
  - For more information about KVMs which can connect to CC1000, see [Compatible KVM Table](#)
-