

VE814T

HDMI HDBaseT Transmitter with Dual Output (4K@100m)
(HDBaseT Class A)



Place your HDMI displays up to 100 meters away from your HDMI source devices with the VE814T HDMI Transmitter over single Cat 5 with Dual Display. Connecting to the [VE814R](#) receiver via affordable and easily available Cat 5e/6 cable, your media can be streamed to up to three HDMI displays – dual displays connected to the receiver and another to the transmitter.

The VE814T also carries an Ethernet pass-through port for Internet connectivity, as well as RS-232 and IR signaling pass-through, which allows you to control the HDMI source device from the remote unit ([VE814R](#)) while also granting access to the HDMI display device from the local unit (VE814T). The VE814T is HDMI (3D, Deep Color, 4Kx2K) and HDCP compatible, ensuring superior video quality and peak performance from your HDMI displays.



Features

- Extends the distance between HDMI source and HDMI display
- [Implements HDBaseT extension technology using only one Cat 5 cable to connect the transmitter and receiver](#)
- Anti-jamming – resists signal interference during high-quality video transmissions using HDBaseT technology
- [Supports one local and two remote displays](#)
- [Supports two IR channels for bi-directional IR signal transmission](#)
- [Extends Ethernet communication with pass-through port](#)
- [HDMI \(3D, Deep Color, 4Kx2K\); HDCP Compatible](#)
- Long distance transmission – up to 100 m
- Supports wide screen
- [Supports resolutions of up to Ultra HD 4Kx2K and 1080p Full HD](#)
- Supports up to 340 MHz bandwidth for high performance video
- [EDID Expert – selects the optimum EDID settings for smooth power-up and highest quality display](#)
- RS-232 Serial Port for serial device peripherals, such as touch screens, bar coders scanners, and so on
- Built-in 8KV / 15KV ESD protection (Contact voltage 8KV; Air voltage 15 KV)
- Easy to install – no software required
- Rack Mountable

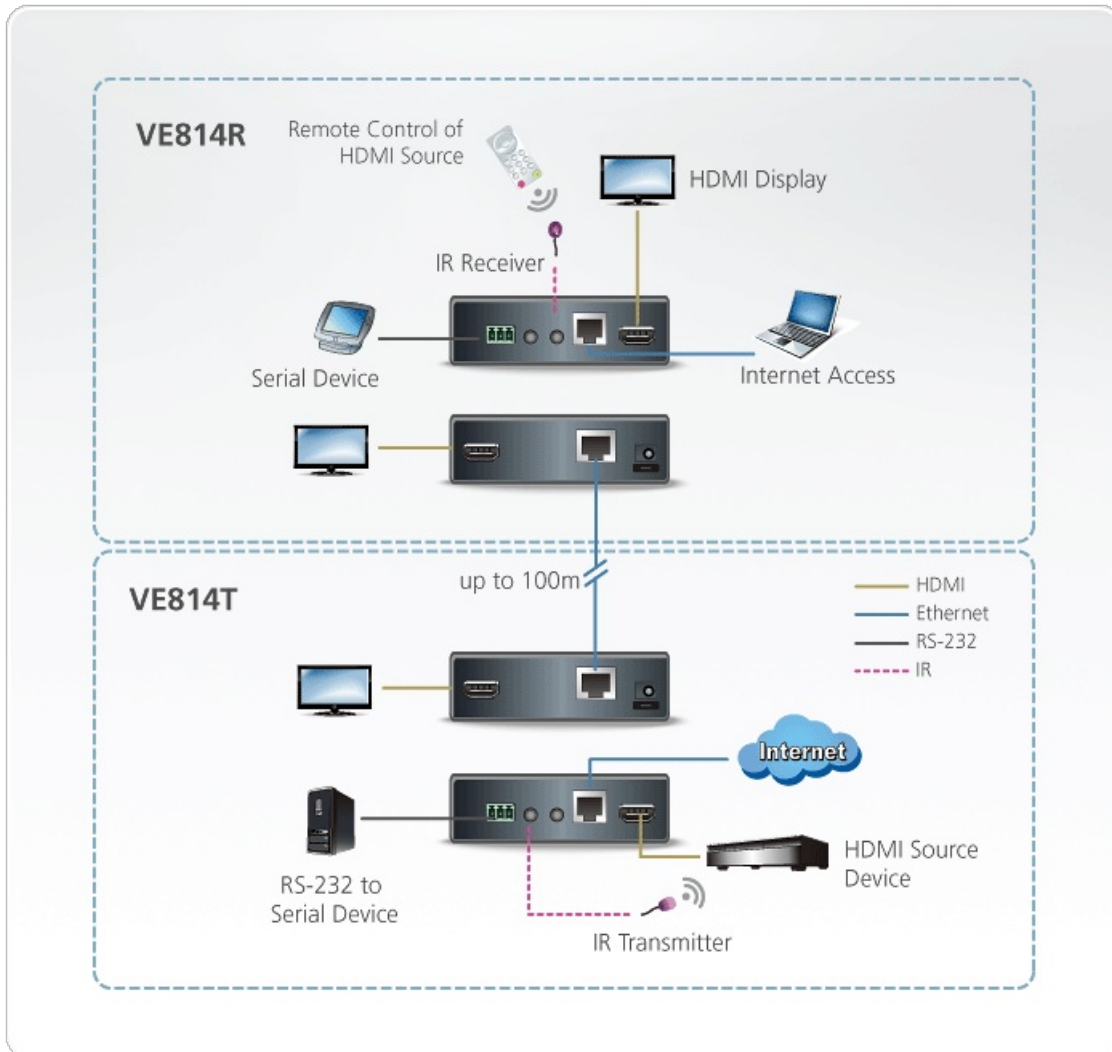
Specifications

Video Input	
Interfaces	1 x HDMI Type A Female (Black)

Impedance	100 Ω
Max. Distance	1.8 m
Video Output	
Interfaces	1 x HDMI Type A Female (Black)
Impedance	100 Ω
Video	
Max. Data Rate	10.2 Gbps (3.4 Gbps Per Lane)
Max. Pixel Clock	Up to 340 MHz
Compliance	HDMI (3D, Deep Color, 4K) HDCP Compatible Consumer Electronics Control (CEC)
Max. Resolutions / Distance	Up to 4K@70m (Cat 5e/6) / 100m (cat 6a); 1080p@100m *4K supported: 4096 x 2160 / 3840 x 2160 @ 60Hz (4:2:0); 4096 x 2160 / 3840 x 2160 @ 30Hz (4:4:4)
Audio	
Input	1 x HDMI Type A Female (Black)
Output	1 x HDMI Type A Female (Black)
Control	
RS-232	1 x Terminal Block, 3 Pole
IR	2 x Mini Stereo Jack Female (Black)
Ethernet	1 x RJ-45 Female
Connectors	
Power	1 x DC Jack
Power Consumption	5.3 VDC, 8.5W Note: <ul style="list-style-type: none"> ● The measurement in Watts indicates the typical power consumption of the device with no external loading. ● The measurement in BTU/h indicates the power consumption of the device when it is fully loaded.
Environmental	
Operating Temperature	0-50°C
Storage Temperature	-20 - 60°C
Humidity	0 - 80% RH, Non-Condensing
Physical Properties	
Housing	Metal
Weight	0.46 kg (1.01 lb)

Dimensions (L x W x H)	14.17 x 10.30 x 3.00 cm (5.58 x 4.06 x 1.18 in.)
Carton Lot	5 pcs
Note	For some of rack mount products, please note that the standard physical dimensions of WxDxH are expressed using a LxWxH format.

Diagram



ATEN International Co., Ltd.

3F, No.125, Sec. 2, Datong Rd., Sijhih District., New Taipei City 221, Taiwan
Phone: 886-2-8692-6789 Fax: 886-2-8692-6767
www.aten.com E-mail: marketing@aten.com



© Copyright 2015 ATEN® International Co., Ltd.
ATEN and the ATEN logo are trademarks of ATEN International Co., Ltd.
All rights reserved. All other trademarks are the property of their respective owners.