

CE370

PS/2 VGA/Audio Cat 5 KVM Extender with Deskew (1280 x 1024@300m)



The CE370 a PS/2 based KVM Extender with automatic signal compensation and RS-232 serial functionality allows access to a computer system from a remote PS/2 console (PS/2 keyboard, monitor, and PS/2 mouse). Because it allows access to a computer system from a remote console, the CE370 is perfect for use in any type of installation where you need to place the console where it is conveniently accessible, but you want the system equipment to reside in a safe location - away from the dust and dirt of the factory floor, or the harsh environmental influence of a construction site, for example. This allows users to deploy system equipment over large distances.

The CE370 supports RGB delay tuner to manually synchronize the RGB signals. This allows users to deploy system equipment over large distances. The CE370's line synchronizing function corrects color phase and timing errors that occur over long distance transmissions. It also enables you to manually tune the R/G/B signal settings.

Features

- Local and Remote Units connect at distances up to 1000 feet (300 m) using Cat 5e cable
- [Deskew Function](#) - automatically synchronizes the time delay of RGB signals to compensate for distance
- [On Screen Display](#) - conveniently adjust video quality with the intuitive OSD menu system
- [Manually tune the R/G/B settings, store and retrieve](#)
- Adjustable gain control - manually adjust signal strength to compensate for distance
- Dual console operation - control your system from both the local and remote keyboard, monitor, and mouse consoles
- Built-in ASIC for greater reliability and compatibility
- [Auto Signal Compensation \(ASC\)](#) and storage of settings
- [RS-232 serial ports](#) - connect to a serial terminal, or serial devices such as touchscreens and barcode scanners (Baud Rate up to 115200 bps)
- Audio Enabled - supports stereo speakers and microphone
- Pushbutton operating mode selection (Local Unit only) - select between Local and Auto operating modes, with the press of a single button
- Built-in 8KV/15KV ESD protection (Contact voltage 8KV; Air voltage 15KV) and 2KV surge protection
- [Superior video quality](#) - 1920 x 1200@60Hz 500 feet(150 m), 1280 x 1024@60Hz 1000 feet(300 m)
- Superior Audio - no loss in audio quality at 1000 feet (300 m)
- Supports Wide Screen formats *
- Supports VGA, SVGA, SXGA (1280 x 1024), UXGA (1600 x 1200), WUXGA (1920 x 1200) and multisync monitors; local monitor supports DDC; DDC2; DDC2B
- Hot pluggable
- Rack mountable
- Easy to install - no software required - connecting cables to the devices is all it takes

* The EDID data for a widescreen is sent from the local video output port. For widescreen modes and displays connect the monitor to the local video output port or use an ATEN EDID emulator.

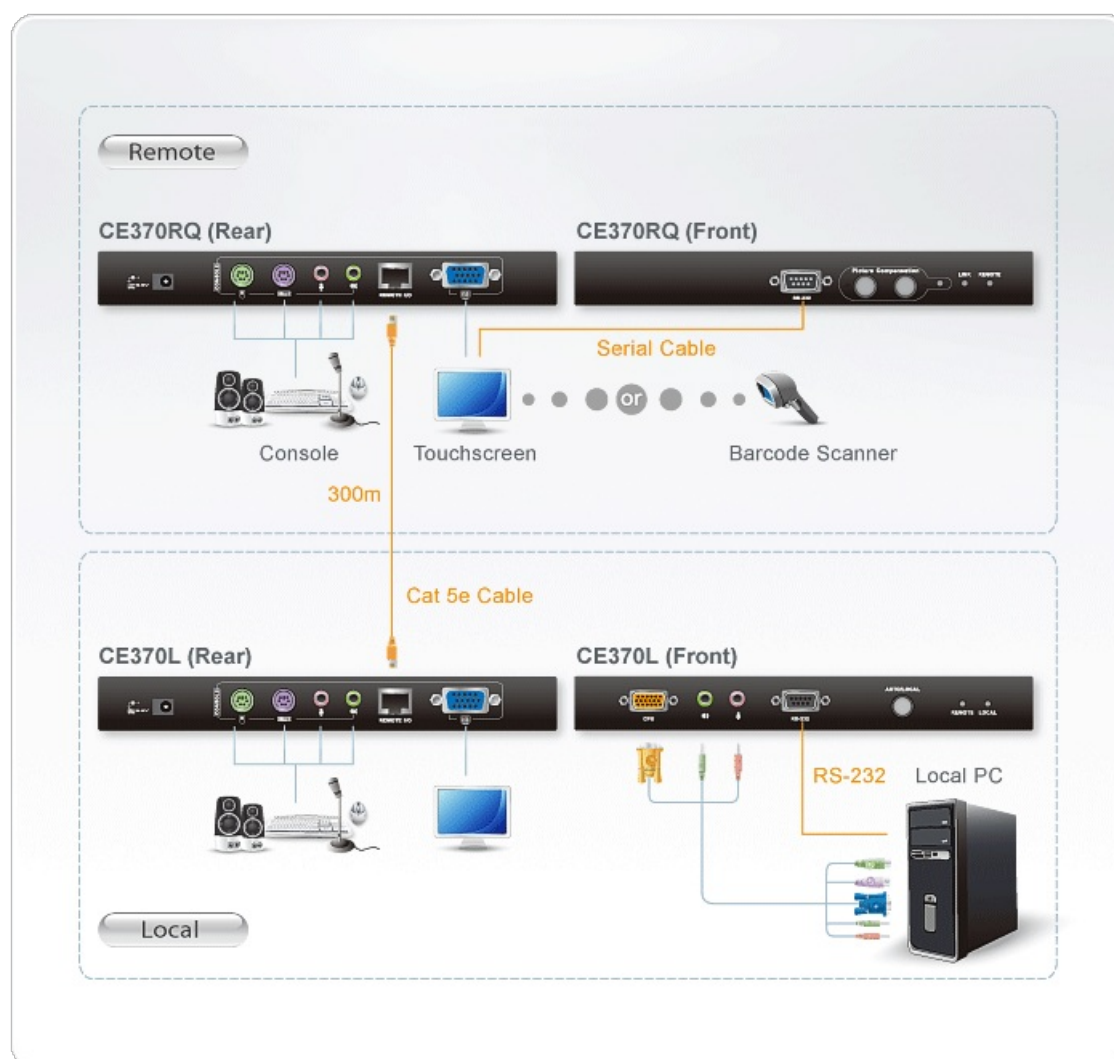
Specification

Function	CE370L	CE370RQ
----------	--------	---------

Connectors		
Console Ports	1 x 6-pin Mini-DIN Female (Purple) 1 x HDB-15 Female (Blue) 1 x 6-pin Mini-DIN Female (Green) 1 x Mini Stereo Jack Female (Green) 1 x Mini Stereo Jack Female (Pink)	1 x 6-pin Mini-DIN Female (Purple) 1 x HDB-15 Female (Blue) 1 x 6-pin Mini-DIN Female (Green) 1 x Mini Stereo Jack Female (Green) 1 x Mini Stereo Jack Female (Pink)
KVM Ports	1 x SPHD-17 Female (Yellow) 1 x Mini Stereo Jack (Green) 1 x Mini Stereo Jack (Pink)	N/A
RS-232	1 x DB-9 Female (Black)	1 x DB-9 Male (Black)
Unit To Unit	1 x RJ-45 Female (Black)	1 x RJ-45 Female (Black)
Power	1 x DC Jack	1 x DC Jack
LEDs		
Local	1 (Green)	N/A
Remote	1 (Green)	N/A
B	N/A	1 (Blue)
G	N/A	1 (Orange/Green)
R	N/A	1 (Red)
Pushbuttons		
Operating Mode Selection	1 x Pushbutton	N/A
Color	N/A	1 x Pushbutton
Select	N/A	1 x Pushbutton
Emulation		
Keyboard / Mouse	PS/2	PS/2
Video	1920 x 1200 @ 60Hz (150 m); 1280 x 1024 @ 60Hz (300 m); DDC, DDC2, DDC2B	1920 x 1200 @ 60Hz (150 m); 1280 x 1024 @ 60Hz (300 m); DDC, DDC2, DDC2B
Power Consumption	DC5.3V:2.70W:17BTU/h Note: ● The measurement in Watts indicates the typical power consumption of the device with no external loading. ● The measurement in BTU/h indicates the power consumption of the device when it is fully loaded.	DC5.3V:4.53W:26BTU/h Note: ● The measurement in Watts indicates the typical power consumption of the device with no external loading. ● The measurement in BTU/h indicates the power consumption of the device when it is fully loaded.
Environmental		
Operating Temperature	0 - 50°C	0 - 50°C
Storage Temperature	-20 - 60°C	-20 - 60°C

Humidity	0-80% RH, Non-condensing	0-80% RH, Non-condensing
Physical Properties		
Housing	Metal	Metal
Weight	0.50 kg (1.1 lb)	0.49 kg (1.08 lb)
Dimensions (L x W x H)	20.20 x 8.64 x 2.50 cm (7.95 x 3.4 x 0.98 in.)	20.20 x 8.64 x 2.50 cm (7.95 x 3.4 x 0.98 in.)
Note	For some of rack mount products, please note that the standard physical dimensions of WxDxH are expressed using a LxWxH format.	

Diagram



ATEN International Co., Ltd.

3F., No.125, Sec. 2, Datong Rd., Sijhih District., New Taipei City 221, Taiwan

Phone: 886-2-8692-6789 Fax: 886-2-8692-6767

www.aten.com E-mail: marketing@aten.com



© Copyright 2015 ATEN® International Co., Ltd.
 ATEN and the ATEN logo are trademarks of ATEN International Co., Ltd.
 All rights reserved. All other trademarks are the property of their respective owners.