

VE8952T

4K HDMI over IP Transmitter with PoE



Powering AV over IP with Ease



The ATEN VE8952T 4K HDMI over IP Transmitter with PoE delivers visually lossless 4K AV signals with low latency over long distance via a standard Gigabit network. It is an effective and easy-to-use solution that directly addresses the challenges system integrators encounter when deploying AV over IP.

- **Limitless Scalability and Flexibility**
From a simple point-to-point setup to hundreds of endpoints, it offers flexibility, scalability and multi-functionality in extender, splitter, matrix switch, and video wall applications.
- **No Complicated IP Setup**
Allows you to effortlessly switch input sources via top panel pushbuttons/ID display and offers simple configuration that requires no extensive IT experience.
- **No Additional Server PCs or Software Required**
Effortlessly manage your AV over IP system by logging in to any transmitter from the intuitive web GUI with drag and drop operation.
- **Go Further for Less with Daisy Chaining**
Easily expand your AV network coverage without cable clutter or extra network switches while also lowering per-port costs.
- **Locate Anywhere without the Need for Power Cabling**
With PoE support, you can easily place VE8952T units where they are needed the most without having to install additional power cabling and outlets.
- **Flexible Control with [Mobile App](#)**
Manage and control any VE8952T with a dedicated app (VE8950/VE8900 Control App) that allows instant preview, monitoring, and switching of video sources to streamline your operations.

*Note: For more information regarding installation and network switch requirements, please refer to the Implementation Guide :
http://assets.aten.com/product/manual/VE89_Implementation_Guide.pdf

Contact Us

Get a quote for this product or get in touch with our sales experts

[Get Quote](#)

[Contact Sales](#)



Simply Better Connections

Talk to Our Experts

If you prefer to have ATEN contact you, please complete the form and a representative will be in touch with you shortly

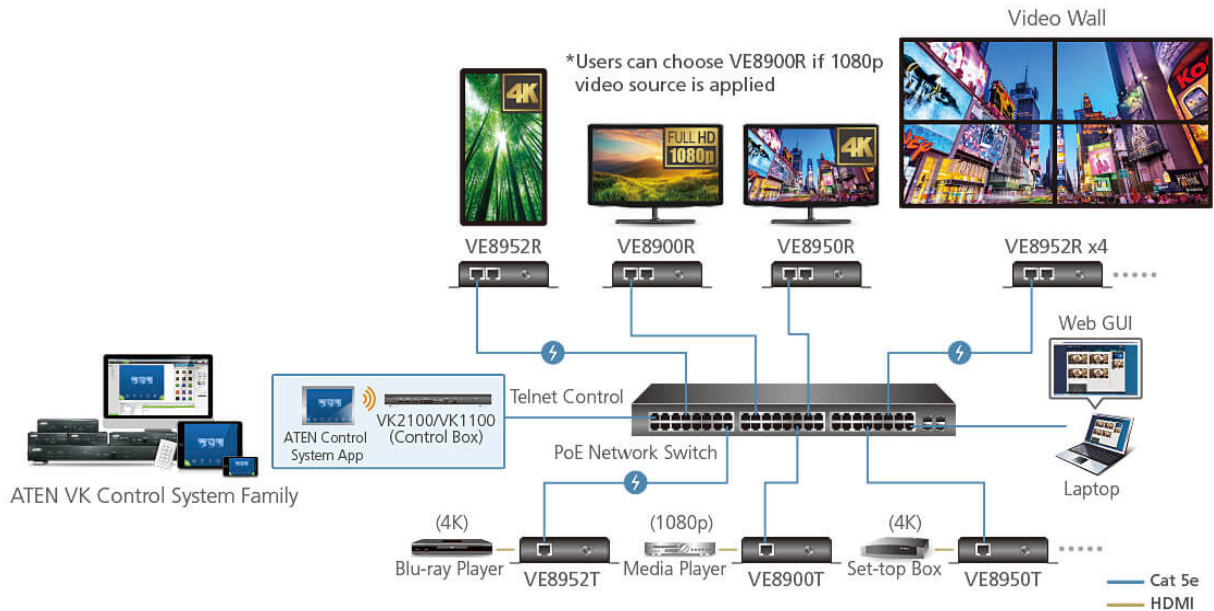
- Country *

- Customer Type *



Features

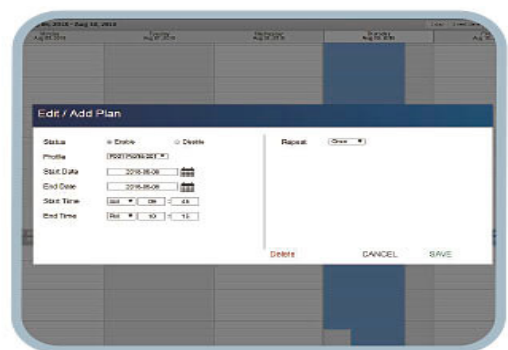
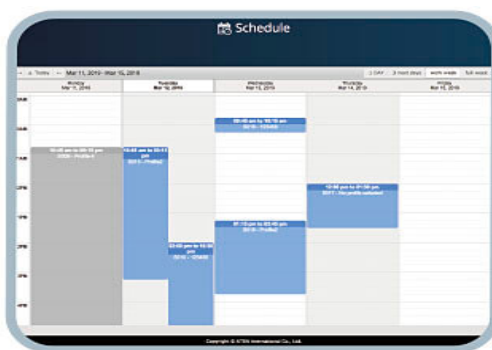
- **Lightweight Compression with Ultra-low Latency**
 - Delivers visually lossless high-quality video up to 4K @ 30 Hz 4:4:4
 - Ensures stunning quality video using ATEN advanced video lossless compression technology
 - EDID Expert™ selects the optimum EDID settings for smooth power-up, high-quality display and the best video resolution across different screens
 - Offers different levels of video compression rate including Smooth, Balance, and High Quality for users to choose depending on practical usage
- **Power over Ethernet Support**
 - Locate VE8952 anywhere without having to install additional power cabling and outlets
- **Limitless Scalability and Flexibility**
 - Extends AV connections from a simple point-to-point to a multi-point to multi-point setup via LAN without distance limitations
 - Offers multi-functionality in extender, splitter, matrix switch, video wall and daisy chain applications
 - Mix and match the latest 4K displays. The built-in scaler automatically scales up incoming video signal to match the maximum resolution of the connected display devices*
- **Collaboration with ATEN Control System**
 - Integrated solution – Compatible with ATEN Control System, allowing users to directly operate VE8900/VE8950/VE8952 via CLI Telnet, RS-232 protocol, or Mobile Control App
 - Effortless operation – One click to effectively operate VE Manager, TV, projector, source player, and related equipments via touch panel and keypad



*Note: VE8952 supports PoE and can be installed in combination with PoE network switches to reduce power cabling and additional power outlets. Before choosing the Network switch and installation, please refer to the Implementation Guide.

• Spontaneous Scheduling Management

- Offers an user-friendly scheduling management function for users to pre-plan the display schedule
- Provides robust and intuitive scheduling management options to help users to manage all events in the calendar to as detailed as to setting events to minute intervals
- Integrates all VE89 units to arrange the profile by grouping individual receiver or video wall
- Multiple profiles can be arranged to play in any order over a selected period of time



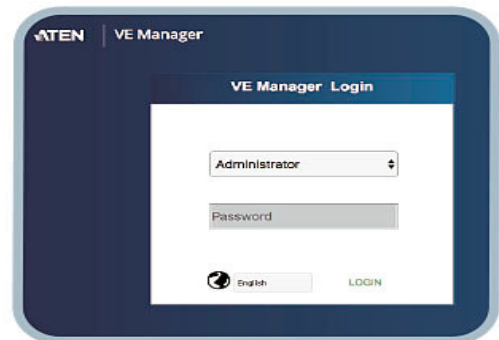
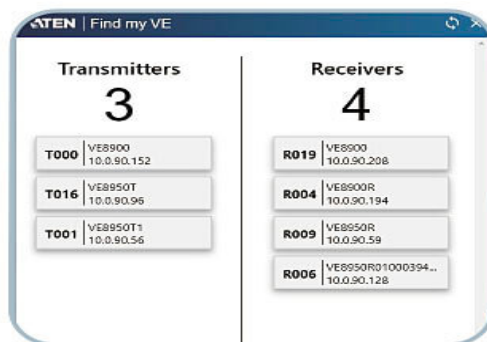
• No Complicated IP Setup

- Simple configuration that requires no extensive IT experience or extra learning
- Effortlessly switches among input sources via top panel pushbuttons



• Web GUI-Based Management, No Additional Server PCs or Software Required

- Simple Access – Without typing IP address on Chrome browser, users are allowed to directly link to VE Manager via one click on "Find My VE" Chrome based free tool



• Go Further For Less with Daisy Chaining*

- Connects multiple displays through a single port to utilize every port of the network switch and maximize their value
- Easily expandable – cabling and system deployment is easy with no huge network switches and fewer cables needed
- Perfect for large-scale deployment covering hundreds of meters, such as hotel facilities, airports, university campuses, stations, shopping malls, and exhibition centers

Note:

1. Depending on your network architecture, we recommend daisy chaining up to 30 units.
2. VE8952 does not support PoE in daisy chain architecture.



• Video Wall Support

- Supports up to 8 x 8 video wall (64 displays)*
- Supports horizontal or vertical (90° and 270° rotation) display orientation
- Easily switches layout profiles, preview and drag-and-drop video sources via the intuitive web GUI



*If you experience issues related to your network architecture, please contact ATEN representatives for support. If you experience issues related to your network architecture, please refer VE89 Implementation guide or contact ATEN representatives for support.

• Embedded / De-embedded Audio Support

- For transmitters – separate audio signal can be embedded into the HDMI stream

• Multiple Control Channels

- Multiple control methods – the system can be managed via Ethernet or top-panel pushbuttons
- USB Connectivity – USB port (USB 2.0) allows for connection of devices such as keyboard, mouse, flash drive, printer, and other USB peripherals*
- Bi-directional IR Channel – IR transmission is processed one way at a time
- RS-232 Channel – bi-directional RS-232 serial port allows for connection of peripherals such as touch screens and bar code scanners

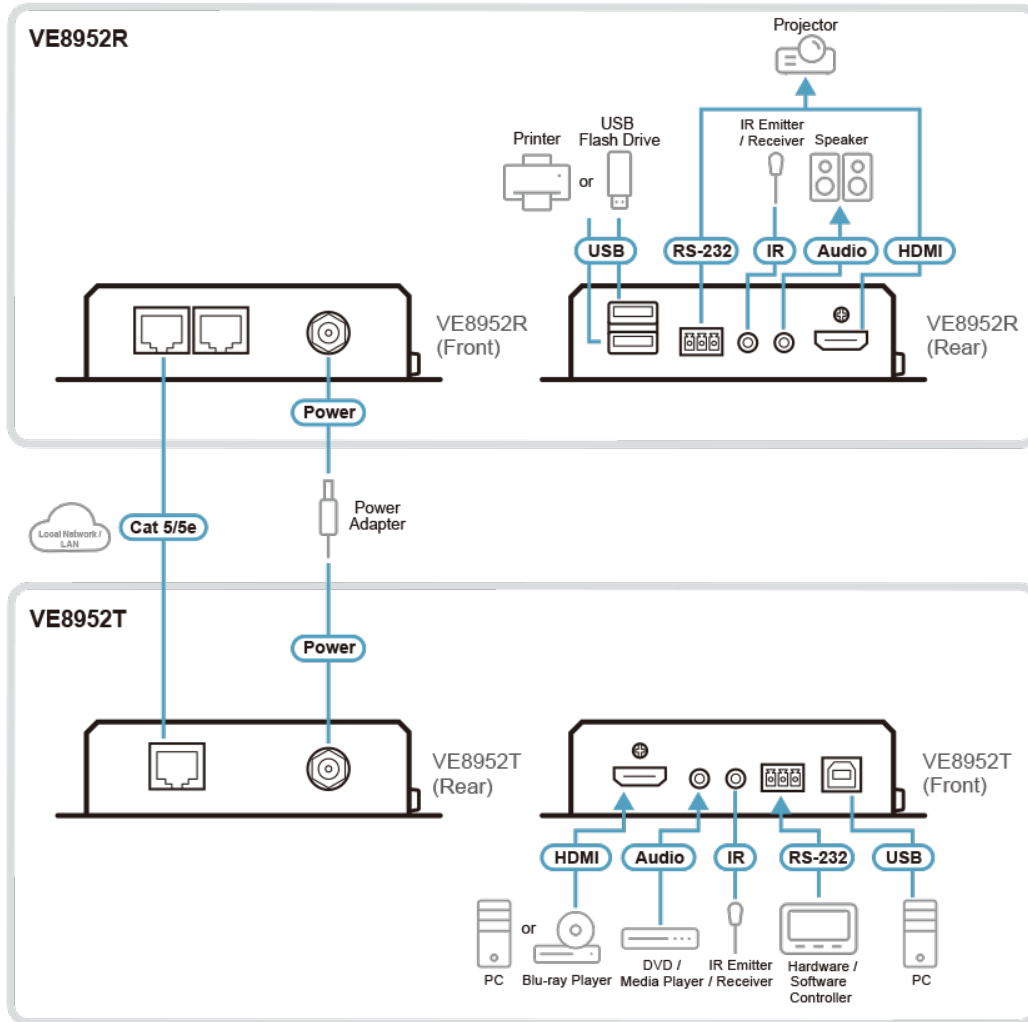
*Each transmitter can be controlled by a total of 4 USB touch screens installed to receivers.

Specification

Video Input	
Interfaces	1 x HDMI Type A Female (Black)
Impedance	100 Ω
Max. Distance	3 m
Video	
Max. Data Rate	Average: 150 ~ 500Mbps
Compliance	HDMI (4K) HDCP Compatible
Max. Resolutions / Distance	Up to 4K@100m (Cat 5e/6, point to point) *4K supported: 4096 x 2160 / 3840 x 2160 @ 60Hz (4:2:0); 4096 x 2160 / 3840 x 2160 @ 30Hz (4:4:4)
Audio	
Input	1 x HDMI Type A Female (Black) 1 x Mini Stereo Jack Female (Green)
Connectors	
Unit To Unit	1 x RJ-45 Female
Power	1 x DC Jack (Black) with locking or 1 x RJ-45 (Power Over Ethernet, POE)
Control	
IR	1 x Mini Stereo Jack Female (Black)
RS-232	Connector: 1 x Terminal Block, 3 pole Baud Rate: 19200, Data Bits:8, Stop Bits:1, no parity and flow control
USB	1 x USB Type B Female (White)
Pushbuttons	
ID Number Selection	2 x Push buttons
Power Consumption	DC5V:3.49W:16BTU/h POE:4.36W:20BTU/h Note: ● The measurement in Watts indicates the typical power consumption of the device with no external loading. ● The measurement in BTU/h indicates the power consumption of the device when it is fully loaded.
Environmental	
Operating Temperature	0 - 40°C
Storage Temperature	-20 - 60°C
Humidity	0 - 80% RH, Non-Condensing
Physical Properties	
Housing	Metal
Weight	0.67 kg (1.48 lb)
Dimensions (L x W x H) with bracket	17.02 x 14.69 x 3.00 cm (6.7 x 5.78 x 1.18 in.)
Dimensions (L x W x H) without bracket	16.60 x 12.49 x 2.90 cm (6.54 x 4.92 x 1.14 in.)

Diagram

▶ Connection Diagram


ATEN International Co., Ltd.

3F., No.125, Sec. 2, Datong Rd., Sijhih District., New Taipei City 221, Taiwan
 Phone: 886-2-8692-6789 Fax: 886-2-8692-6767
 www.aten.com E-mail: marketing@aten.com



© Copyright 2015 ATEN® International Co., Ltd.
 ATEN and the ATEN logo are trademarks of ATEN International Co., Ltd.
 All rights reserved. All other trademarks are the property of their respective owners.