

UC2322

2-Port USB to RS-232 Hub



The ATEN USB-to-Serial RS-232 Hub provides an external plug-and-play RS-232 serial connection for computers, notebooks, laptops, and handheld computing devices that support the USB specification. It provides a quick, simple, and cost-effective solution and is ideal for various communication and automation applications.

ATEN provides 4 models in this series: 2/4-Port USB-to-Serial RS-232 Hub; [2/4-Port USB-to-Serial RS-422/485 Hub](#)

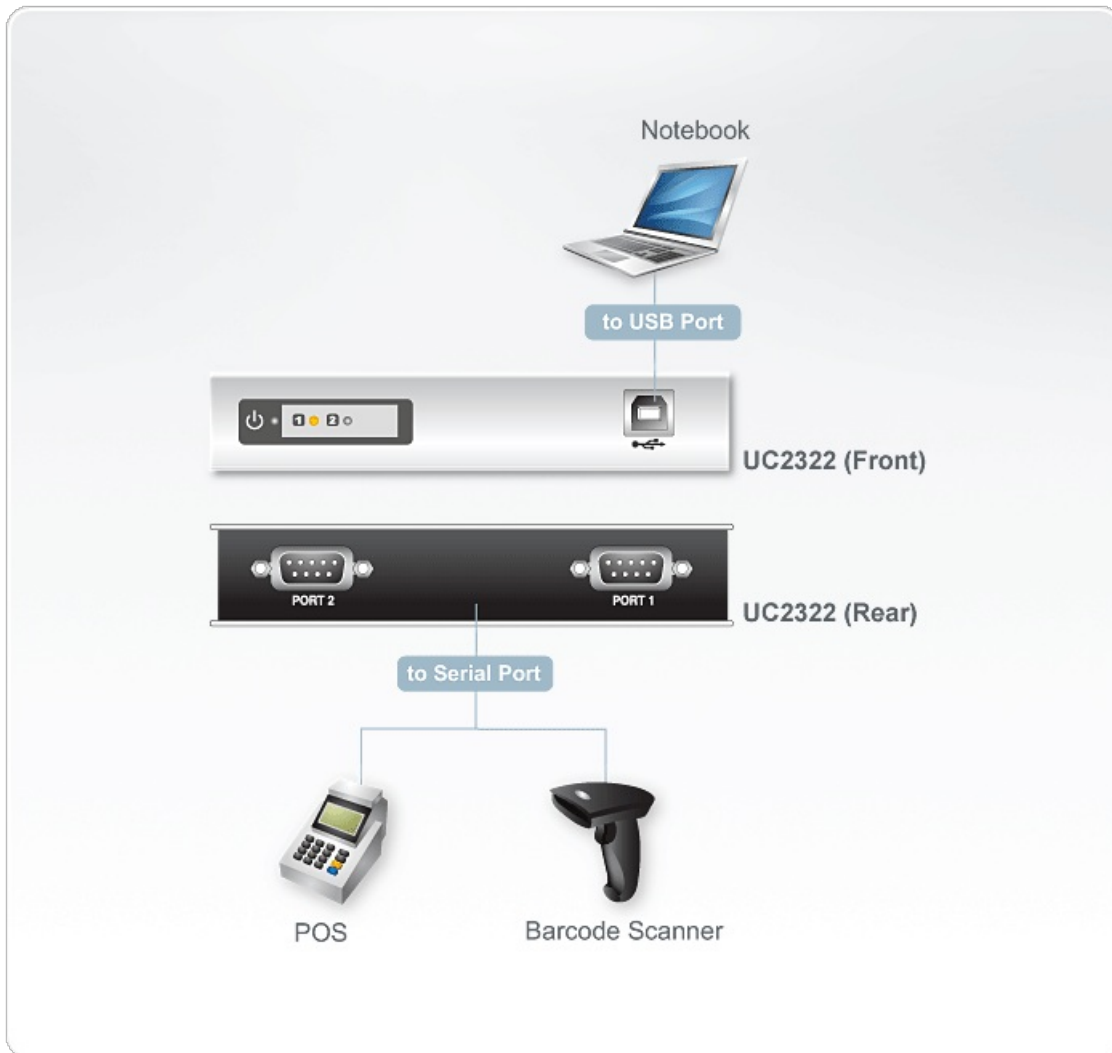
Features

- Easy way to add 2 RS-232 serial ports
- Fully compliant with USB 1.1; USB 2.0 compatible
- Supports RS-232 serial interface
- Supports automatic handshake mode
- Up to 115.2 Kbps data transfer rate for each serial port
- Dual data buffers for each upstream and downstream data transfer
- No IRQ, DMA, I/O address resources required
- Supports hot-swapping and plug-and-play
- Built-in 16KV ESD protection
- Supports both bus power and external power
- Works with cellular phones, PDAs, digital cameras, modems and ISDN terminal adapters
- OS support - Windows 2000/2003/XP/NT

Specification

Device Connections	2
Connectors	
USB Port	1 x USB Type B Female (White)
Power	1 x DC Jack
Serial	2 x DB-9 Male (Black)
LEDs	
Ports	2 (Green)
Power	1 (Orange)
Data Rate	115.2 Kbps (max.)
USB Specification	USB 1.1 Compliant; USB 2.0 Compatible
Power Mode	Bus Powered; use of Power Adapter is optional
Power Consumption	DC5V:0.46W:2BTU
Environmental	
Operating Temperature	0–50°C
Storage Temperature	-20–60°C
Humidity	0–80% RH, Non-condensing
Physical Properties	
Housing	Metal
Weight	0.30 kg (0.66 lb)
Dimensions (L x W x H)	12.50 x 8.00 x 2.50 cm (4.92 x 3.15 x 0.98 in.)
Note	For some of rack mount products, please note that the standard physical dimensions of WxDxH are expressed using a LxWxH format.

Diagram



ATEN International Co., Ltd.

3F., No.125, Sec. 2, Datong Rd., Sijhih District., New Taipei City 221, Taiwan
 Phone: 886-2-8692-6789 Fax: 886-2-8692-6767
 www.aten.com E-mail: marketing@aten.com



© Copyright 2015 ATEN® International Co., Ltd.
 ATEN and the ATEN logo are trademarks of ATEN International Co., Ltd.
 All rights reserved. All other trademarks are the property of their
 respective owners.