

UC4852

2-Port USB to RS-485/422 Hub



The ATEN USB-to-Serial RS-422/485 Hub provides an external plug-and-play RS-422 / RS-485 serial connection for computers, notebooks, laptops, and handheld computing devices that support the USB specification. It provides a quick, simple, and cost-effective solution and is ideal for various communication and automation applications.

ATEN provides 4 models in this series: 2/4-Port USB-to-Serial RS-422/485 Hub; [2/4-Port USB-to-Serial RS-232 Hub](#)



Features

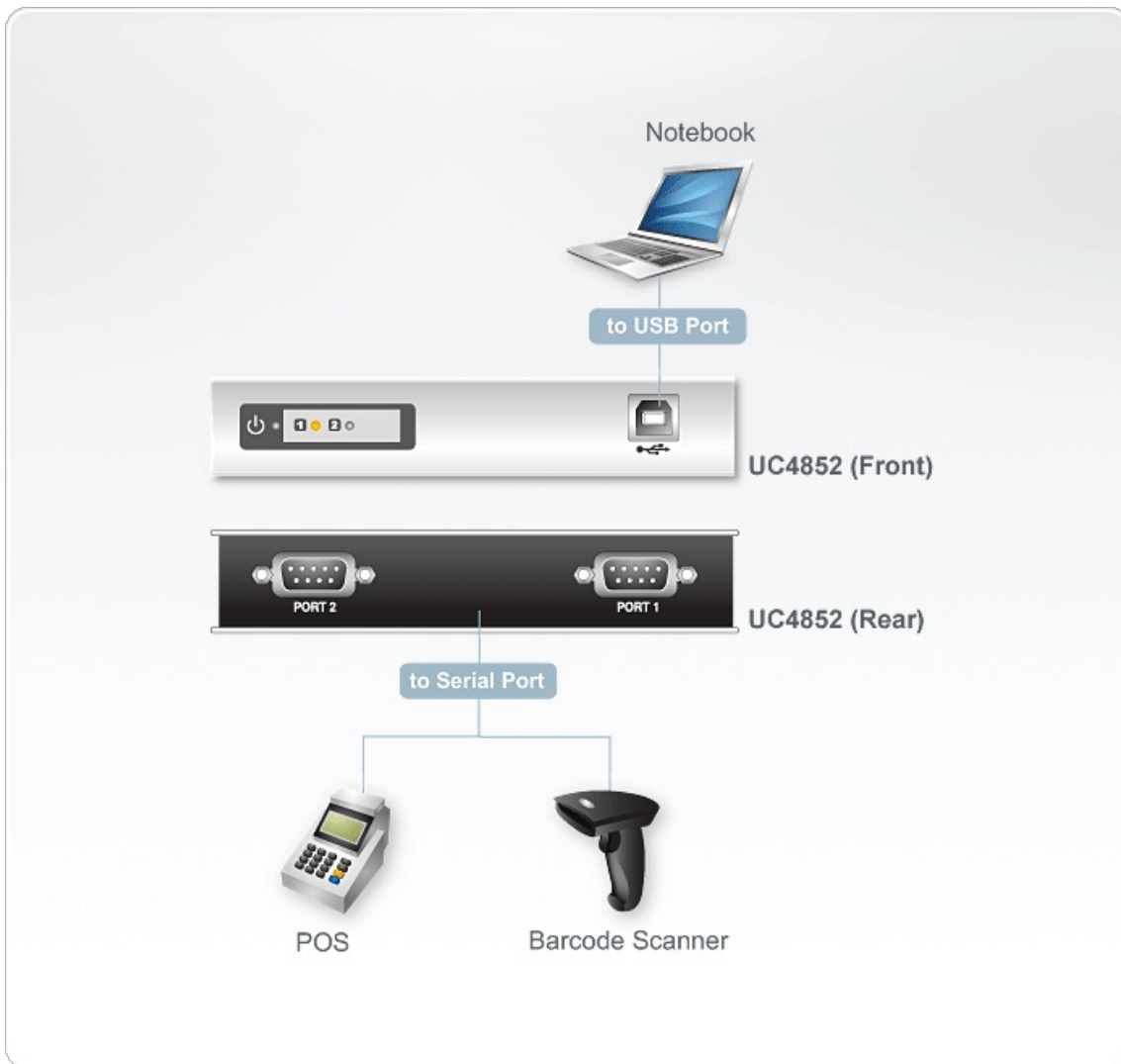
- Easy way to add 2 RS-422/RS-485 serial ports
- Fully compliant with USB 1.1; USB 2.0 compatible
- Supports RS-422/RS-485 serial interface
- Supports RS-422 or RS-485 signal on individual ports
- Supports automatic handshake mode
- Up to 115.2 Kbps data transfer rate for each serial port
- Dual data buffers for each upstream and downstream data transfer
- No IRQ, DMA, I/O address resources required
- Supports hot-swapping and plug-and-play
- Built-in 16KV ESD protection
- Supports both bus power and external power
- Works with cellular phones, PDAs, digital cameras, modems and ISDN terminal adapters
- OS support - Windows

Specification

2-Port USB-to -Serial RS-422/485 Hub

| | |
|------------------------|---|
| Device Connections | 2 |
| Connectors | |
| USB Port | 1 x USB Type B Female (White) |
| Power | 1 x DC Jack |
| Serial | 2 x DB-9 Male (Black) |
| LEDs | |
| Ports | 2 (Green) |
| Power | 1 (Orange) |
| Data Rate | 115.2 Kbps (max.) |
| USB Specification | USB 1.1 Compliant; USB 2.0 Compatible |
| Power Mode | Bus Powered; use of Power Adapter is optional |
| Power Consumption | DC5V:0.22W:1BTU |
| Environmental | |
| Operating Temperature | 0–50°C |
| Storage Temperature | -20–60°C |
| Humidity | 0–80% RH, Non-condensing |
| Physical Properties | |
| Housing | Metal |
| Weight | 0.30 kg (0.66 lb) |
| Dimensions (L x W x H) | 12.50 x 8.00 x 2.50 cm (4.92 x 3.15 x 0.98 in.) |
| Note | For some of rack mount products, please note that the standard physical dimensions of WxDxH are expressed using a LxWxH format. |

Diagram



ATEN International Co., Ltd.

3F., No.125, Sec. 2, Datong Rd., Sijhih District., New Taipei City 221, Taiwan
Phone: 886-2-8692-6789 Fax: 886-2-8692-6767
www.aten.com E-mail: marketing@aten.com



© Copyright 2015 ATEN® International Co., Ltd.
ATEN and the ATEN logo are trademarks of ATEN International Co., Ltd.
All rights reserved. All other trademarks are the property of their
respective owners.