

VK6000

ATEN Control System - Configurator Software



The ATEN Configurator Software (VK6000) is a GUI-based management tool that provides the easiest way to set up the ATEN Control System. You can use the software to configure devices you want to control by utilizing our intuitive GUI, which helps you to set up the system in easy configuration steps – without writing code.

The software allows you to create a custom control interface simply by dragging and dropping default images and icons onto pages. Plus, you can upload images and icons to design a personalized user interface – from the colors, to buttons and backgrounds, to a company's logo, there is no limit. The VK6000 also has a built-in ATEN Library with 10,000+ device drivers and all the ATEN ProAV product drivers so that you can seamlessly integrate any hardware device from any major brands in no time.

Features

- Simple profile setup with easy configuration steps via intuitive GUI
- Customizable GUI to be used on mobile devices and PC
- Supports [ControlAssist](#) that allows PC control (PC shutdown, media files, PowerPoint files) ¹
- Supports Pronto formatted IR codes – IR command codes can be entered in Hex format
- Supports Modbus protocol – enables integration with Modbus devices, including TCP, RTU and its checksum data
- Supports Telnet CLI (command-line interface) mode for third-party system integration
- Built-in [Database Generator](#) for device driver setup and overall device management
- Built-in ATEN Library comprising 10,000+ device drivers and complete ATEN ProAV product drivers
- Scheduling for repeating events
- Programming-based Script Editor for complex monitoring scenario handling
- Two-way communication enables user-defined event monitoring to automatically trigger the next actions
- Status synchronization of managed devices across multiple mobile devices
- Supports status monitoring and action control configurations of third devices implemented on [ATEN Unizon](#).²
- Allows for Display Real-time Streaming Protocol (RTSP) and ATEN VE89 series video
- Test tool to verify commands in action before uploading the profile to the VK series controllers
- Simulator to simulate and review the customized GUI before uploading

Note:

1. For details on the supported PC control actions, refer to the ATEN Control System User Manual.

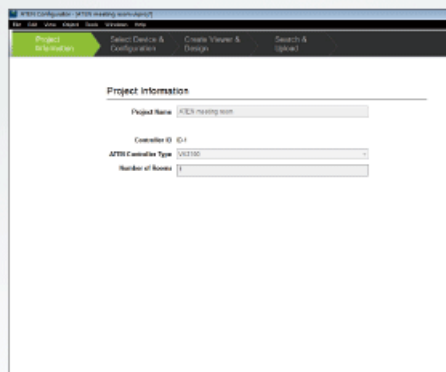
2. The function is applicable to [VK2200](#) / [VK1200](#).

Specifications

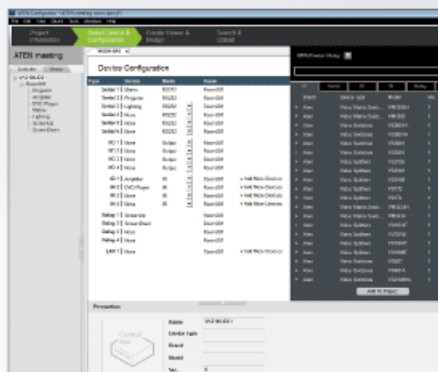
Processor	1GHz
OS Support	Windows 7(32/64 bit) and above
Storage Capacity	500MB available hard disk space
System Memory	1GB

Diagram

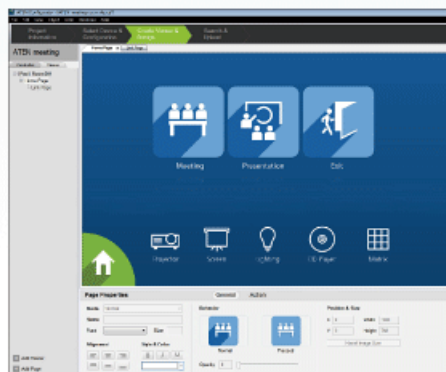
1 Create Project



2 Select Device



3 Configure Viewer Profile



4 Upload Profile



ATEN International Co., Ltd.

3F, No.125, Sec. 2, Datong Rd., Sijhih District., New Taipei City 221, Taiwan
 Phone: 886-2-8692-6789 Fax: 886-2-8692-6767
 www.aten.com E-mail: marketing@aten.com



© Copyright 2015 ATEN® International Co., Ltd.
 ATEN and the ATEN logo are trademarks of ATEN International Co., Ltd.
 All rights reserved. All other trademarks are the property of their
 respective owners.